

Crime & Justice in Nevada

2006





STATE OF NEVADA
DEPARTMENT OF PUBLIC SAFETY

Jim Gibbons, Governor

Phillip Galeoto, Director
Department of Public Safety

Capt. Philip K. O'Neill, Division Chief
Records and Technology Division
Records and Identification Bureau



Jim Gibbons
Governor



Phillip Galeoto
Director

Captain Philip K. O'Neill
Division Chief

Records & Technology Division

808 W Nye Lane
Carson City, Nevada 89703
Telephone (775) 684-6262 • Fax (775) 684-6266
www.nvrepository.state.nv.us

FORWARD

The Nevada Department of Public Safety presents the thirteenth annual report of *Crime and Justice in Nevada 2006*.

Every year a new theme is selected to feature in the publication. This year the various monuments, statues and plaques displayed throughout Carson City and Reno were used. These great symbols are a silent reminder of the people, organizations, military and law enforcement personnel that have given and sacrificed so much for this great State and Country. The cover showcases the Nevada Law Enforcement Memorial that displays the one hundred and one law enforcement personnel that have lost their lives in the line of duty in Nevada since 1861. When viewing this photo and the others displayed throughout this book, hopefully you experience the same pride and gratitude for the sacrifice and the historical significance they represent.

Without the efforts of Nevada's law enforcement agencies this publication would not be possible. We would like to extend our sincere thanks and appreciation to each agency for their dedication and commitment in providing accurate and timely crime statistics to the state Uniform Crime Reporting Program.

In an effort to provide useful information to law enforcement and the public, a new section of statistical data detailing Protection Orders has been added.

If we can be of any assistance or you have comments regarding this publication, please feel free to contact the Uniform Crime Reporting Unit of the Records Bureau, Records and Technology, Department of Public Safety at 775-684-6261. This publication is available online at www.nvrepository.state.nv.us.

Captain Philip K. O'Neill, Division Chief
Records & Technology

CRIME AND JUSTICE IN NEVADA

ACKNOWLEDGMENTS

The Nevada Department of Public Safety, Records and Identification Bureau, would like to express its appreciation to the following personnel for their involvement with the Nevada UCR Program

NEVADA STATE UCR PROGRAM

UCR Advisory Committee Members

Colonel Chris Perry, Chairman
Department of Public Safety

Judge Connie J. Steinheimer
District Court Judges Association

Judge Edward R. Johnson
Justice and Municipal Court Judges Association

Sheriff Neil B. Harris
Elko County Sheriff's Office

Ms. Cinda Louks, Division Director
Las Vegas Metropolitan Police Department

Noel S. Waters
District Attorney's Association

Dr. Ken Peak
University of Nevada, Reno
Criminal Justice Department

Director Ron Titus
Administrative Office of the Courts

UCR Technical Subcommittee

Ms. Kathie Heath, Chairman
Carson City Sheriff's Department

Ms. Peggy Stewart
Elko County Sheriff's Office

Ms. Vona Savini, Co-Chairman
Las Vegas Metropolitan Police Department

Ms. Eva Tregellas
Humboldt County Sheriff's Office

Ms. Debbie Thompson
Reno Police Department

Ms. Barbara J. Telles
North Las Vegas Police Department

Ms. Cindy Miles
Henderson Police Department

Josh Porter, Statistician II
Pam Sebring, Administrative Assistant IV
Sherry Sharp, Administrative Assistant II

APPRECIATION

The success of the Nevada Uniform Crime Reporting Program hinges on the complete, accurate and timely participation of all of Nevada's law enforcement agencies. The program was established with the support of criminal justice and law enforcement agencies statewide in July of 1991 (NRS 179A.078).

Although responsibility for actual development and execution of the program was vested in the Nevada Department of Public Safety, the individuals at the municipal, county and state levels who submit the raw data are the entities ultimately critical to viability. Accordingly, we recognize the following dedicated people.

Sandy Anderson

Boulder City Police Department

Karen Rowe

Carlin Police Department

Becky Neep

Carson City Sheriff's Office

LaRonda Atchison

Churchill County Sheriff's Office

Robert Giles

Clark County School District PD

Karis Drake

Keri Scheetz

Douglas County Sheriff's Office

Peggy Stewart

Elko County Sheriff's Office

Kerry Edson

Laura Mandros

Elko Police Department

Sgt. Michelle Knight

Esmeralda County Sheriff's Office

Sandy Mariluch

Eureka County Sheriff's Office

Glenda Dockery

Fallon Police Department

Cindy Miles

Henderson Police Department

Darlene Thon

Humboldt County Sheriff's Office

Linda Fisher

Lander County Sheriff's Office

Sgt. John Stever

Lincoln County Sheriff's Office

Laura Richardson

Lovelock Police Department

Ben Hoge

Las Vegas Fire Department

Bambi Pilley

Sharnette Hammond

Jackie Irons

Sharon Harried

Victoria Pinjuv

Las Vegas Metropolitan PD

Nancy Hronesh

Julie Roeder

Lyon County Sheriff's Office

Doug Smaellie

Mesquite Police Department

Bryn Skvarna

Mineral County Sheriff's Office

Annette Garcia

Nevada Division of Investigations

Trp. Natasha Koch

NHP Region I - Las Vegas

Tina Stout

NHP Region II - Reno

Sgt. Roy Baughman

NHP Region III - Elko

Elizabeth Puga

Barbara Telles

Luz Mendez

North Las Vegas Police Department

Ray Robert

Nye County Sheriff's Office

Chad Odegaard

Pershing County Sheriff's Office

Debbie Thompson

Reno Police Department

Debbie Bartley

Sparks Police Department

Pete Litano

Sparks Fire Department

Monique Cruse

Storey County Sheriff's Office

Sgt. Natalie Infurno

Taxicab Authority

Kaylene Brady

TMCC Police Department

James Morrow

UNLV Police Department

Jeanne Ohlson

UNR Police Department

Lori Larson

Washoe County School District PD

Wanda Cockayne

Washoe County Sheriff's Office

Bobbie Bostock

West Wendover Police Department

Sgt. Scott Henroid

Sgt. Mike Stolk

White Pine County Sheriff's Office

Nancy Johnson

Winnemucca Police Department

Helen Sturtevant

Yerington Police Department

AUTHORITY

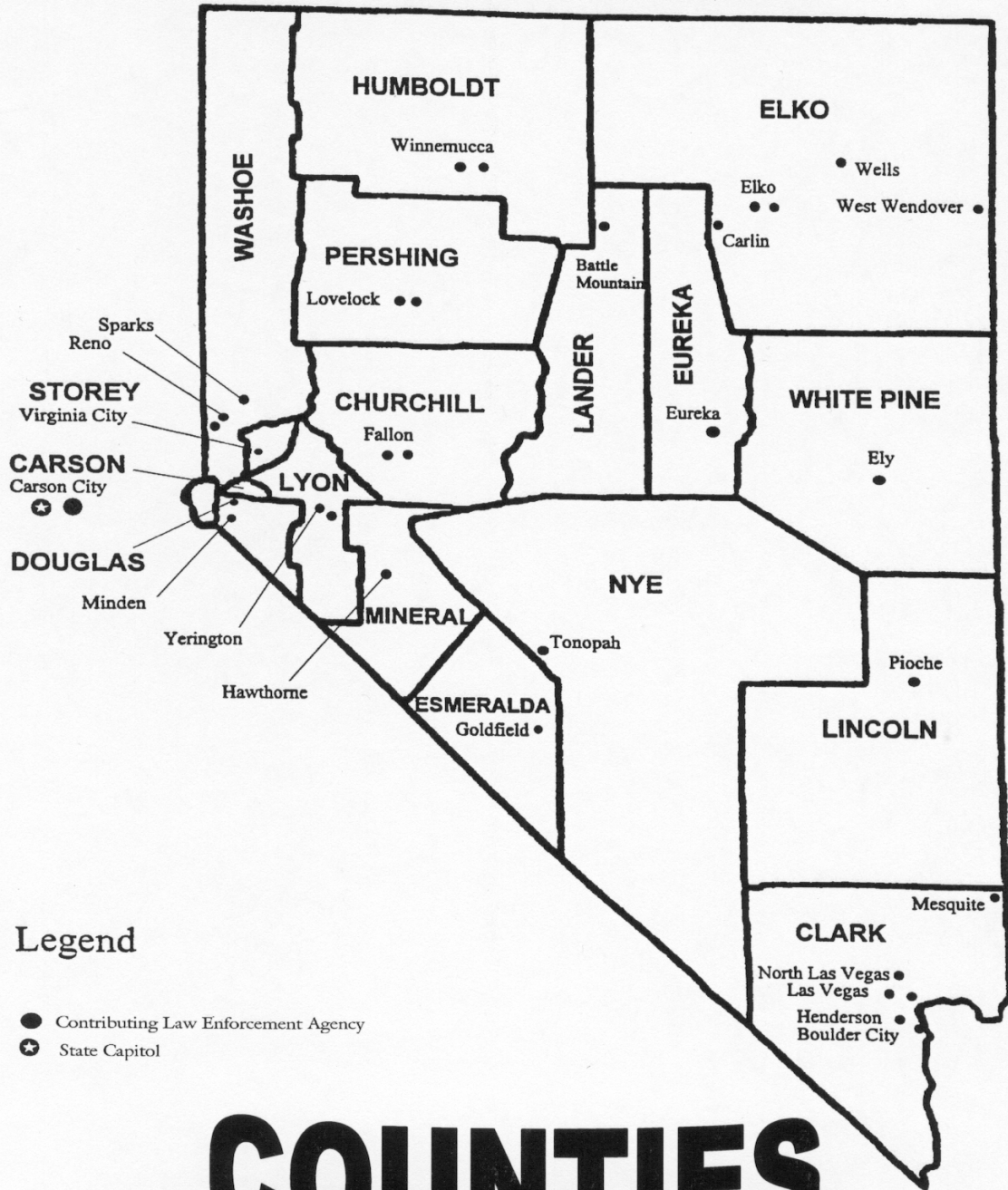
The Sixty-Sixth Session of the 1991 Nevada Legislature created a Uniform Crime Reporting Program within the Nevada Highway Patrol.

NRS 179A.078

Uniform program for reporting crimes; advisory committee to assist in establishing and carrying out program.

1. The director of the department shall establish within the central repository, a uniform program for reporting crimes which is designed to collect statistical data relating to crime or delinquency of children and to facilitate the collection and analysis of statistical data relating to crime at a central location.
2. To assist in establishing and carrying out the program required by subsection 1, the director shall establish an advisory committee consisting of eight members selected by the director. The committee must be composed of:
 - (a) One member who represents an association of district judges in this state;
 - (b) One member who represents an association of justices of the peace and judges of municipal courts in this state;
 - (c) One member who represents an association of district attorneys in this state;
 - (d) One member who represents a law enforcement agency located in a county whose population is less than 400,000;
 - (e) One member who represents a law enforcement agency located in a county whose population is 400,000 or more;
 - (f) One member who represents the Nevada highway patrol;
 - (g) One member who represents the University and Community College System of Nevada and has knowledge of the criminal justice system; and
 - (h) One member who represents the office of court administrator.
3. The members of the advisory committee are not entitled to receive compensation while engaged in the business of the advisory committee.
4. A member who is selected to fill a vacancy must possess the same general qualifications as his predecessor in office.

NEVADA



Legend

- Contributing Law Enforcement Agency
- ★ State Capitol

COUNTIES

TABLE OF CONTENTS

Introduction.....	8
Crime Factors.....	8
Potential Uses of UCR Data.....	9
Reporting Procedure.....	10
Hierarchy Rule.....	12
Verification Procedure.....	12
Policy, Release of UCR Statistical Information.....	13
Profile, State of Nevada.....	14
Nevada Crime Clock.....	15
Crime in Nevada - Highlights.....	16
Nevada Index Crimes.....	18
Nevada Statewide Index Crimes.....	19
Statewide Index Crimes/Clearances.....	21
Total Index Crimes in Nevada, 1995-2006.....	22
Total Index Crimes and Clearances by County and Month.....	23
Annual Crimes/Clearances Summary.....	24
Comparison of Crimes/Clearances.....	28
Index Crimes: Violent.....	31
Property.....	32
Murder.....	33
Rape.....	37
Robbery.....	40
Aggravated Assault.....	44
Burglary.....	47
Larceny-Theft.....	51
Motor Vehicle Theft.....	55
Arson.....	59
Clearance Rates.....	63
Arrest Data.....	65
Hate Crimes.....	141
Arrest Data - Drug & Liquor Violations.....	144
Stolen and Recovered Property Values.....	147
Enforcement Personnel Employment Data.....	154
Enforcement Personnel Assaults.....	156
Classification of Offenses.....	158
Calculation of Rates.....	165
Domestic Violence.....	166
Protection Orders.....	178

INTRODUCTION

The Uniform Crime Reporting (UCR) Program is a nationwide cooperative effort of over 17,000 city, county, and state law enforcement agencies voluntarily reporting data on crime. The monthly contributions to Nevada's current program, with 37 local law enforcement agencies reporting full-time, represent a solid beginning in establishing an effective statewide criminal justice information system (CJIS). We invite remaining non-participating local law enforcement agencies to join their peers in this effort and to participate in this important program.

Inquiries concerning Uniform Crime Reporting may be directed to:

**Department of Public Safety
Records and Technology Division
Uniform Crime Reporting
808 West Nye Lane
Carson City, NV 89703
Tel (775) 684-6262**

Ideally, UCR data will eventually merge with that of the other major components of the criminal justice system (i.e., prosecutors, courts, and corrections) to form an integrated system for the exchange of vital management information. The availability of such data will enhance law enforcement's proactive response to crime and justice in Nevada. The Nevada Department of Public Safety has administered the UCR Program as a statewide, standardized method of collecting statistics on crime as it is reported to law enforcement. The UCR program also produces a reliable set of criminal statistics for use in law enforcement administration, operation, and management. Additionally, Nevada's statistics are forwarded monthly to the Federal Bureau of Investigation for inclusion in its annual report Crime in the United States.

We hope UCR data will be used over the years as a leading social indicator. With this annual report, Nevada's citizens can look to UCR as the primary information source on the nature and extent of crime in Nevada. Criminologists, sociologists, legislators, state and local planners, the media, and academicians can use the statistics for wide and varied research, planning, as well as for other applications.

CRIME FACTORS

Statistics gathered under the Uniform Crime Reporting Program are submitted by the participating law enforcement agencies of Nevada and represent a spectrum of crime on statewide, county, and municipal levels. Awareness of the presence of unique variables is necessary if fair and equitable conclusions are to be drawn. These crime-influencing factors are present, to some degree, in every community and their presence affects, in varying degrees, the crime developments of the community. Comparison of crime figures between communities should not be made without first considering individual factors present in each community. Crime, as an outgrowth of society, remains a social problem of grave concern and the police are limited in their role as to its detection and suppression. As stated by the President's Commission on Law Enforcement and Administration of Criminal Justice in its report, The Challenge of Crime in a Free Society, (Page 92):

But the fact that the police deal daily with crime does not mean that they have unlimited power to prevent it, or reduce it, or deter it. The police did not create and cannot resolve the social conditions that stimulate crime. They did not start and cannot stop the convulsive social changes that are taking place in America.

They do not enact the laws that they are required to enforce, nor do they dispose of the criminals they arrest. The police are only one part of the criminal justice system; the government is only one part of society. Insofar as crime is a social phenomenon, crime prevention is the responsibility of every part of society. The criminal process is limited to case-by-case operations, one criminal or one crime at a time.

Following are some conditions that will, by type and volume, affect crime that occurs from place to place.

- Size and density of community population and the degree of urbanization in the surrounding area
- Compositions of population with particular reference to youth concentration
- Economic status of population, median income and job availability
- Relative stability of population, including commuters, seasonal, and other transient types
- Modes of transportation and area highway systems
- Climate, including seasonal weather conditions
- Cultural conditions such as educational, recreational, and religious characteristics
- Standards governing appointments to the police force
- Policies of prosecuting officials, the courts, correctional and parole/probation officials
- Effective strength of law enforcement agencies
- Attitude of the public toward reporting crime and participation in the prosecution of offenders
- The administrative and investigative efficiency of local law enforcement agencies, including the degree of adherence to crime reporting standards
- Organization and cooperation of adjoining and overlapping police jurisdictions

The primary goal of the UCR program is to identify crime and related problems. Statistics in this publication should not be used to measure or to evaluate workloads and results of individual contributing departments. While most police agencies are collectively viewed as crime-fighting units, considerable independent research shows only a small portion of the workload of many departments is spent fighting crime. Because of other assigned duties, the peculiar cycle of crime and clearances, and different community factors that normally affect crime statistics, no conclusions regarding individual departments should be made without consulting directly with the agency being analyzed.

Crime rates in this publication are based on the resident population of the state and its subdivisions as established and published by the Nevada Department of Taxation and the Nevada State Demographer. Population estimates are revised annually. Seasonal population figures are too inaccurate and fluctuate too rapidly to be used in the determination of crime rates. Most Nevada communities experience rather wide seasonal population fluctuations due to the nature of the state's major industries, gaming and tourism. Accordingly, actual crime rates per thousand reported here may appear higher than might be expected for a community of comparable size without substantial fluctuations. This should not deter police administrators from using the data for planning and administrative purposes. Local seasonal population data is available which can be utilized for further statistical refinements.

Additionally, readers are cautioned not to make direct comparisons between crime rates reported for Nevada communities and those of communities of similar size in other states without first carefully analyzing and applying local modifying factors.

POTENTIAL USES OF UCR DATA

The Nevada program is unique among similar state programs as it is dedicated to doing more than just gathering statistics. The program is dedicated to providing statistical support services to its contributors and to produce a variety of reports, or crime profiles, on an as-needed basis. These crime profiles will set the stage for extensive use of the data by police administrators and other criminal justice agencies.

Persons reading this report may ask, "How good are Uniform Crime Reports and how can they be used?" Initial responses that come to mind may be limited, but as the information is examined more closely, many and varied uses are discovered. Foremost is keeping the public informed as to the volume and nature of crime, that they may judge and act accordingly. In actuality, UCR is a multi-faceted vehicle of many uses. Here are a few, but by no means all such uses, as they relate to different groups and agencies.

Law Enforcement Contributors

Administrative information relating to:

1. Budget - need and justification
2. Staffing - number needed relating to state average number of employees vs. population and crime rate
3. Department composition - Patrol, Administration, Jail, Laboratory, Detective Division, Juvenile
4. Identification of specific problem crimes

5. Disbursement of personnel and shifts in accordance with the crime picture of individual communities with avoidance of duplication of services in cases of concurrent jurisdiction
6. Training - according to crime problem prioritization
7. Equipment procurement - by justified need
8. Selective enforcement - by crime volume, particular times, and seasons through UCR information
9. Crime Profiles - identification of problems unique to individual communities
10. Long-range Planning - as anticipated by crime trends

Governor and Legislature

1. Broad, accurate picture of crime in Nevada by location, volume, type, and rate, as reported and derived from records of all participating enforcement agencies
2. Guide to valid funding needs of special interest groups and their requests for funding of the same
3. Need for more or fewer specialized programs
4. Identification of crime trends and their relationship(s) to training, courts, corrections, and other criminal justice agencies
5. Identification of various social problems relating to drugs, alcohol, juveniles and rehabilitation
6. Effectiveness of various social programs related to drugs, alcohol, juveniles and rehabilitation

Courts - Prosecution

1. Valuable general research information on crimes within the areas being served
2. Crime trend information
3. Identification of specific crimes to be considered in the prosecutorial and judicial processes

Press

A factual source for use in reporting crime and socially-related problems

Social Agencies

1. Identification of problem areas for concentration of remedial activities
2. Application for general evaluation of program effectiveness

Educational Institutions

Educators at all levels can use UCR data for various studies, budget preparation, and planning.

The above listed are a few possible uses, undoubtedly many more exist. The larger the UCR database becomes, the clearer its value will become. Since effective problem solving begins with problem identification, UCR will continue to be meaningful for years to come.

Nevada UCR believes the data provided here can serve as a catalyst for some departments to establish modern record systems for the first time. With other agencies it may spur emplacement of needed system upgrades. This will enable administrators at the chief and sheriff levels to be able to take a renewed look at their departments, potentially effecting beneficial internal operational changes. Awareness by subordinate personnel that their reports and arrest information are being used, not just filed away, will result in better and more comprehensive reporting. Finally, the periodic release of crime information to the general public will keep the crime problem in its proper perspective.

REPORTING PROCEDURE

In Nevada's Uniform Crime Reporting Program, contributing law enforcement agencies are wholly responsible for compiling their own crime reports and submitting them to the Uniform Crime Reporting Section of the Records and Technology Division in Carson City. The UCR Section, to maintain data quality and uniformity, furnishes to the contributing agencies continuous training and instruction in Uniform Crime Reporting procedures. All contributors are also given data submission guidelines, report forms, and a State of Nevada UCR Guide that outlines, in detail, procedures to score and to classify offenses. The guide illustrates and discusses the monthly and annual report forms.

A centralized record system is vital to the sound operation of any law enforcement agency. It is an essential element for crime reporting. Trained UCR personnel at the state level assist contributors in following established reporting procedures.

Law enforcement agencies (state, county and municipal) report the number of offenses that become known to them in the following crime categories:

- 1. Criminal Homicide**
 - a. Murder and Non-Negligent Manslaughter
 - b. Manslaughter by Negligence (not an index crime)
- 2. Forcible Rape**
 - a. Rape by Force
 - b. Attempts to Commit Forcible Rape
- 3. Robbery**
 - a. Firearm
 - b. Knife or Cutting Instrument
 - c. Other Dangerous Weapon
 - d. Strong-Arm (Hands, Fists, Feet, etc.)
- 4. Assault**
 - a. Firearm
 - b. Knife or Cutting Instrument
 - c. Other Dangerous Weapon
 - d. Hands, Fists, Feet, etc, Aggravated
 - e. Hands, Fists, Feet, Not Aggravated (not an index crime)
- 5. Burglary**
 - a. Forcible Entry
 - b. Unlawful Entry - No Force
 - c. Attempted Forcible Entry
- 6. Larceny-Theft (except motor vehicle theft)**
- 7. Motor Vehicle Theft**
 - a. Autos
 - b. Trucks and Buses
 - c. Other Vehicles
- 8. Arson**

In addition, the agencies submit the number of arrests recorded, by sex and age, for 21 other "Part II" offenses. Descriptions of these offenses are provided under the offense classification section.

Another facet of the UCR Program involves the collection of "hate crimes". In 1990, the President of the United States signed into law the "Hate Crime Statistics Act of 1990". The data identifies crimes that manifest evidence of prejudice based on race, religion, sexual orientation, ethnicity, and physical or mental disabilities.

Whenever complaints of crime are determined through investigation to be unfounded or false, they are subtracted from the actual count. The number of "actual offenses known" in these crime categories is reported to the Nevada UCR Section whether or not anyone is arrested for the crime; the stolen property is recovered; prosecution is undertaken; or any other restrictive consideration is in effect.

Other data configurations which contributing agencies tally through the UCR system are as follows:

- Number of crimes cleared by arrest or exceptional means
- Number of crimes cleared involving persons under age 18
- Number of enforcement officers killed or assaulted
- Type and value of property stolen and recovered

- Number of arrests for all criminal acts (except traffic violations), broken out by arrestee age, sex and race
- Number of sworn and civilian enforcement personnel employed by agency type

HIERARCHY RULE

The experience of law enforcement agencies handling UCR data shows that, for the most part, offenses of law occur singly as opposed to many being committed simultaneously. In these single-offense situations, it must be decided whether the crime was one of the Index Offenses, and if so, it is scored accordingly. However, if several offenses are committed at the same time by a person or a group of persons, a different approach must be used in classifying and scoring. As a general rule, a multiple-offense situation requires classification of each of the offenses and identification of those that are Part I crimes. The Part I offenses involved must then be located within their ranked list, which goes from most to least priority. The offense, which is highest on the list, is scored. The other offenses involved in the incident are ignored. The Hierarchy Rule, which requires counting only the highest offense on the list and ignoring all others, applies only to crime reporting and does not affect the number of charges for which the defendant may be prosecuted in the courts.

VERIFICATION PROCEDURE

Data uniformity and accuracy is of primary concern under this program. With coverage of approximately 37 reporting jurisdictions within the State of Nevada, the problems with attaining uniformity are apparent. Issuance of instructions and training of personnel within contributing agencies does not complete the role of the UCR Section. It is standard operating procedure to examine each incoming report for mathematical accuracy and completeness.

Clearance factors, recovery rates, and other elements are scrutinized and changes are suggested to the contributors where needed. In the instance of minor mathematical corrections, the contributing agency is either contacted by mail, fax, telephone, e-mail or in-person visitations made by qualified UCR Program personnel.

The possibility of report duplication requires constant verification through internal consistency checks. If duplication is suspected, the contributing agency is immediately contacted and the matter is resolved in accordance with guidelines. Continual analysis of reports is ongoing to assist contributors, and to maintain the quality necessary for a factual and successful program. In addition, an FBI Quality Assurance Group periodically visits contributors to cooperatively assist in necessary auditing of records and reporting methods.

Regardless of the extent of the quality control process employed by the Uniform Crime Reporting Section, the accuracy of the data assembled under this program depends on the sincere effort exerted by each contributor to meet the necessary standards of reporting. We are especially grateful to the UCR support staff in each contributing agency for their diligence and persistence, and for their constant attention to reporting policies and procedures.

PROFILE OF THE STATE OF NEVADA

This profile is presented to provide some general knowledge and facts about the State of Nevada. The information might assist users of this publication in understanding the environment in which reported crime incidence and arrest data occurred.

NEVADA FACTS AND FIGURES

---Nevada is the seventh largest state in the United States, covering 110,540 square miles. The state's long western border is shared with California, the most populous state in the Union. On its northern and eastern borders are the states of Oregon, Idaho, Utah, and Arizona. The state's longest distance from the northwest corner to the southern tip is approximately 600 miles. At the widest point it is nearly 350 miles.

---Nevada consists of seventeen counties, ranging in size from 153 square miles for the state capital of Carson City to over 18,000 square miles for Nye County, one of the largest counties in the United States.

---The geography of the state consists of rugged desert and mountain terrain, with the highest mountain peak (Boundary Peak in Esmeralda County) having an elevation of 13,146 feet above sea level and the lowest point on the Colorado River having an elevation of 490 feet.

---Nevada has a four-season climate, with wide variations between its northern and southern latitudes. Low temperatures in the north can go well below zero in the winter months, while high temperatures in the south can climb well over 100° Fahrenheit in the summer. It is the most arid state in the country, receiving an average of less than ten inches of precipitation annually.

---Of Nevada's total land area, 85.3% is controlled by the federal government. State and local governments control .3% and 1.6% falls under the jurisdiction of 22 American Indian Reservations. The United States military, which has a significant presence, has also reserved large areas.

---Nevada's population increased by over 54% between 1980 and 1990 (from 800,508 to 1,236,130) and by 60.0% from 1990 to 2000 (1,236,130 to 2,065,610). In July 2006 we had a state population of 2,623,050 (up 22.86% since 2000). Nevada has one of the fastest rates of growth in the nation for the past several years. Due to these tremendous long-term increases, several communities have been hard-pressed to provide necessary infrastructures. This trend is expected to continue, although at a slightly lower rate. Despite this growth, Nevada remains one of the most sparsely populated states, with about 22 people per square mile. Fully 87% of the state's total population is located in the counties of Clark (1,874,837 – 71%) and Washoe (409,085 – 16%).

---The Nevada State Demographer-University of Nevada, Reno, estimates the following population composition for Nevada in 2006: White, 61.31%; Hispanic, 23.96%; African Americans, 6.90%; Asian, Pacific Islanders, 6.51%, American Indians, Eskimo, Aluet 1.32%. Age 5, 1.49%, Ages 6-18, 19.39%, Ages 19-64, 67.00% and ages 65 and over, 12.12%. Males, 50.78%, and Females, 49.22%.

---Tourism and gaming are the state's largest industries. The gaming industry generated revenue of \$12,621,406,000 in 2006. Approximately 51,409,699 people visited in 2006. These and other interesting statistics are available at www.travelnevada.com in the section of "news," under "discover the facts". Of concern to Nevada is the rapid spread of gaming to other states and Indian reservations. The Las Vegas area has responded by expanding and building huge "destination" or "theme" resorts, catering to a broader spectrum of interests.

---This is a substantial ongoing effort to diversify Nevada's economy. Over the past decade, hundreds of out-of-state firms have relocated to Nevada and thousands of new businesses have opened.

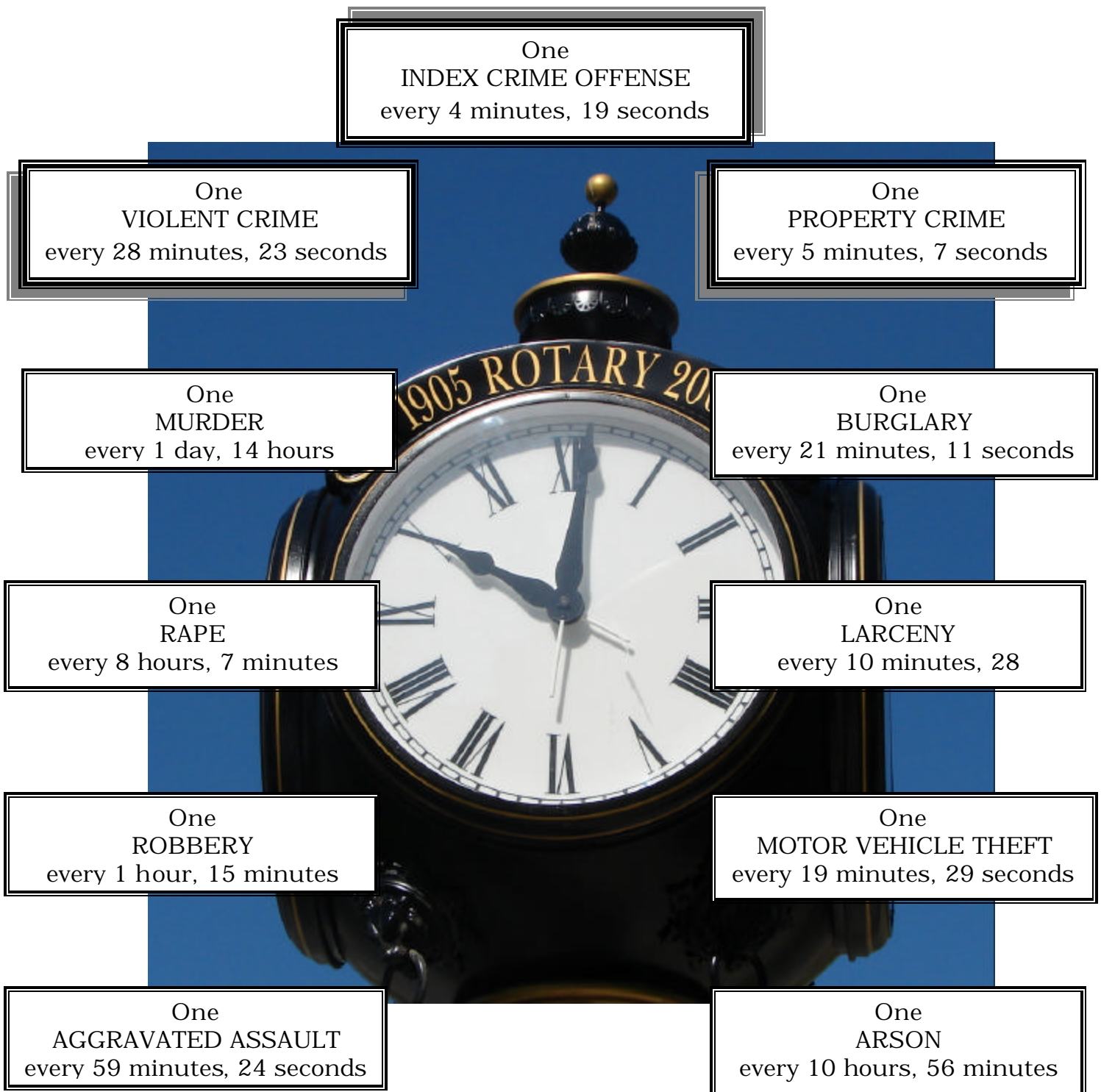
---Nevada is the largest gold producer in the United States and ranks in the top ten in the world. The bulk of this mining boom has occurred within the past fifteen years and has primarily taken place in the rural northern part of the state.

Highlights



Sarah Winnemucca statue, located inside the Capitol lobby, Carson City, Nevada
This is a full-size replica of the statue representing Nevada in the US Capitol's National Statuary Hall in Washington DC.

NEVADA CRIME CLOCK - 2006 HIGHLIGHTS



The crime clock should be viewed with care. Being the most aggregate representation of UCR data, it is designed to convey the annual reported crime experience by showing the relative frequency of occurrence of the Index Offenses. This mode of display should not be taken to imply regularity in the commission of the offenses; rather, it represents the annual ratio of crime to fixed time intervals.

CRIME IN NEVADA 2006 - HIGHLIGHTS

CRIME RATE

The Nevada Crime Rate is based on the occurrence of an index offense per 1,000 residents of the state. Municipal and county rates are based on their individual populations. The state crime rate for 2006 was 46.3 per 1,000. The comparable rate for 2005 was 46.8. The state population utilized was 2,623,050 the latest available estimate for 2006 from the State Demographer, Bureau of Business and Economic Research, University of Nevada, Reno.

INDEX OFFENSES

Law Enforcement reported 121,353 Index Offenses in 2006--an increase of 3,540 offenses (2.9%) from the 117,813 offenses reported in 2005. Nevada's ten-year average for total index offenses (1997-2006) was 101,811.

VIOLENT CRIMES

Murder, rape, robbery and aggravated assault make up the "violent crimes" category. Violent crimes as a group increased by 3,852 offenses from 2005 for a 26.3% increase. During 2006 violent crimes totaled 18,513. The 2005 total was 14,661. Violent crimes accounted for 15.3% of all reported Index Crimes (12.4% in 2005) and displayed a crime rate of 7.1 per 1,000 population. Nevada's ten-year average for violent crimes (1997-2006) was 13,312.

PROPERTY CRIMES

Property crimes, consisting of burglary, larceny, motor vehicle theft, and arson decreased in 2006 by 312 offenses (0.3%) from 2005. There were 102,840 offenses reported in 2006, with 103,152 experienced in 2005. Property crimes accounted for 84.7% of all index crimes in 2006, with a crime rate of 39.2 offenses per 1,000 population. Nevada's ten-year average for property crimes (1997-2006) was 88,500.

MURDER

There were 229 murders committed in Nevada during 2006, up 19 (8.3%) from the 210 murders reported in 2005. Law enforcement cleared 155 murders this year (67.7%). Nevada's ten-year average for homicide offenses (1997-2006) was 185.

RAPE

Forcible rapes increased by 64 during 2006. There were 1079 offenses reported to enforcement in 2006, compared to 1015 in 2005. Of the total, 923 were actual rapes, while 156 were classified as attempts. Nevada's ten-year average for rape offenses (1997-2006) was 945.

ROBBERY

Robberies increased by 2318 offenses (33.0%), from 4,709 in 2005 to 7,027 in 2006. Nevada's ten-year average for robbery offenses (1997-2006) was 5,020.

AGGRAVATED ASSAULT

Nevada law enforcement reported 10,178 aggravated assaults during 2006, an increase of 1,451 (16.6%) from the 2005 figure of 8,727. In addition, there were 36,441 simple assaults in 2006. Nevada's ten-year average for aggravated assault offenses (1997-2006) was 7,161.

BURGLARY

Burglary offenses increased in 2006 by 1,361 (5.8%) from the 2005 total of 23,458. The 24,819 burglaries in 2006 resulted in property loss totaling \$75,249,092. Burglaries represented 20.5% of all reported Index Offenses. Nevada's ten-year average for burglary offenses (1997-2006) was 20,709.

LARCENY

The crime of larceny in Nevada for 2006 totaled 50,258, a 3.3% decrease from the 2005 figure of 51,983. Thefts from buildings represented 42.0% of all larceny crimes reported. Nevada's ten-year average for larceny-theft offenses (1997-2006) was 48,844.

MOTOR VEHICLE THEFT

The number of motor vehicle thefts increased by 28 (0.1%) during 2006, from 26,934 in 2005 to 26,962. Nevada's ten-year average for motor vehicles stolen (1997-2006) was 18,286.

ARSON

Arson was added to the list of reportable index crimes in 1980. During 2006 there were 801 arsons reported in Nevada, compared to 777 in 2005. This represents an increase of 3.0%. Estimated property loss from these offenses totaled \$12,738,920. Nevada's ten-year average for arson (1997-2006) was 661.

STOLEN/RECOVERED PROPERTY

During 2006 law enforcement agencies recorded \$270,924,432 worth of property stolen during the commission of index crimes. They were able to recover \$75,790,756 (28.0%).

CLEARANCE RATE

Law enforcement agencies cleared 16.7% of all index crimes in Nevada in 2006, a decrease of 3.7% over 2005. Nationally, 24.5% were cleared in 2005.

ARRESTS

The total number of persons arrested, summoned, or cited by enforcement in 2006, including juveniles and adults, was 163,067 or 4.8% over the 2005 total of 155,210. Drug arrests by the Department of Public Safety, Investigation Division (NDI) in 2006 were 359. Nevada's total arrest rate per 1,000 population in 2006 was 62.2. This does not include drug or DUI arrests by the Nevada Highway Patrol.

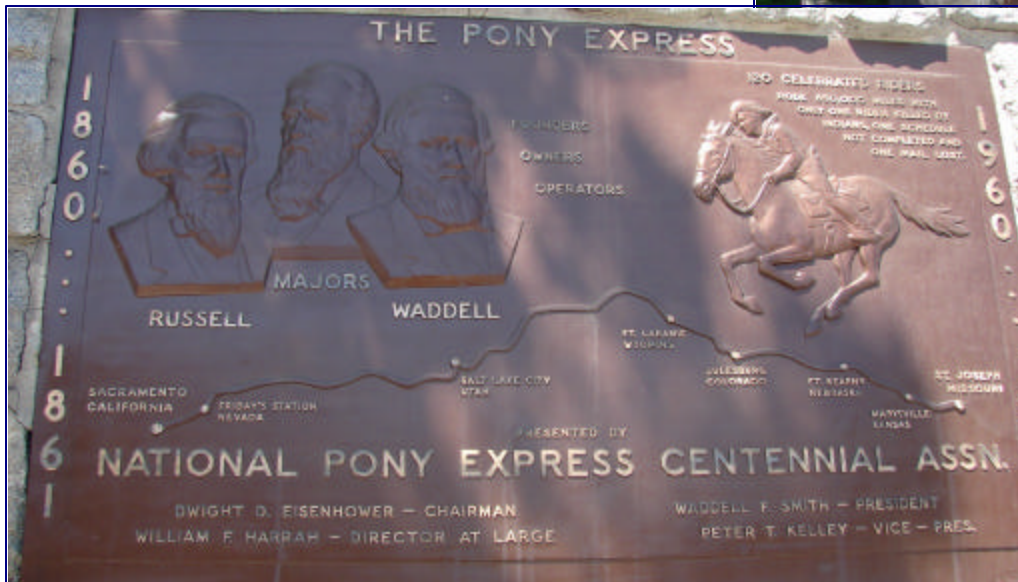
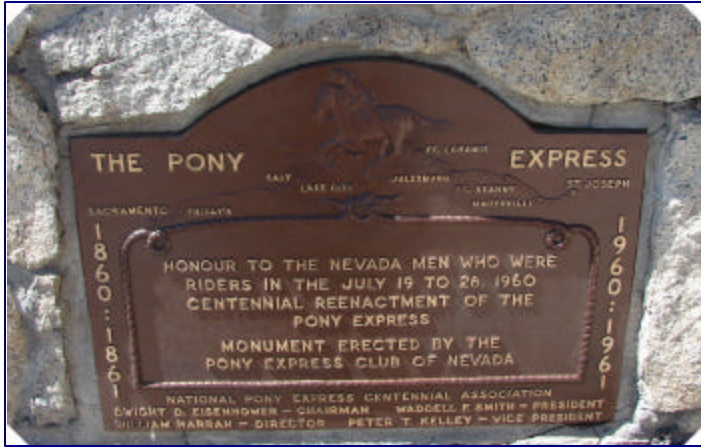
POLICE EMPLOYMENT DATA

Statewide there were 5,187 full-time sworn law enforcement officers in Nevada in 2006. This represents a ratio of 2.0 officers per 1,000 population. Nationally the average ratio per 1,000 was 3.0 in 2005.

OFFICER ASSAULTS

Nevada law enforcement officers experienced 612 assaults in 2006, an increase of 123 (20.1%) from the 489 reported in 2005. Law enforcement cleared 572 (93.5%) of all assaults on personnel.

Index Crimes



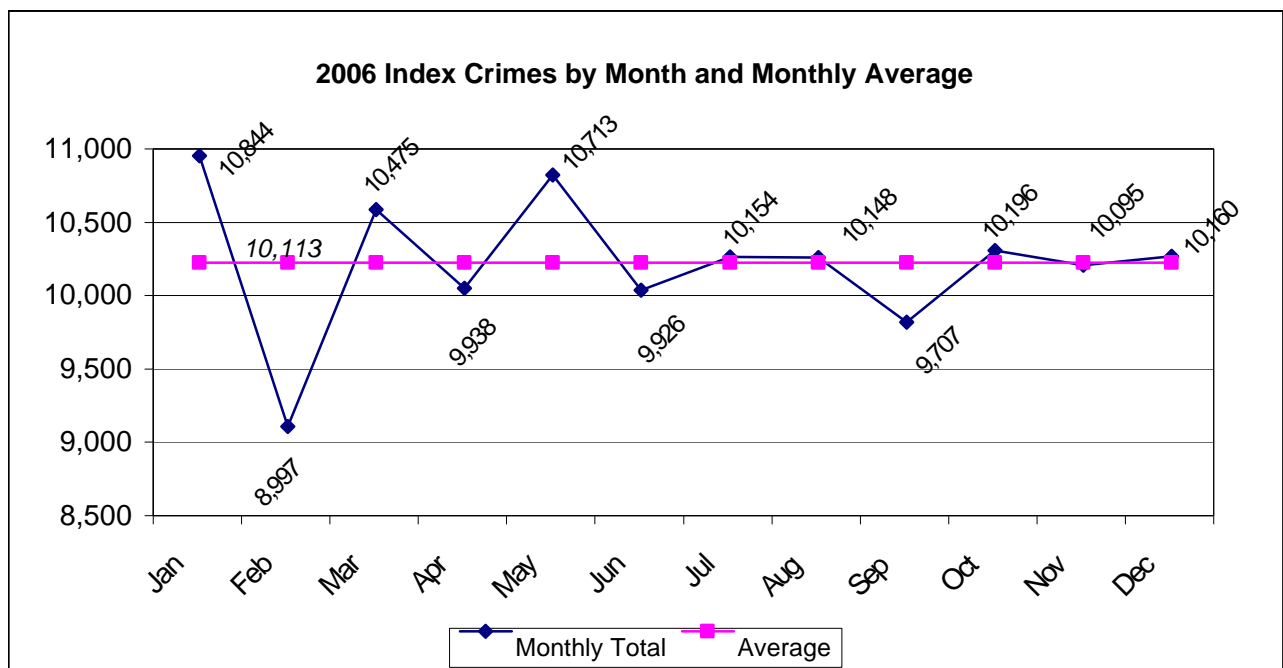
Pony Express Monument located at the Nevada State Museum, Carson City, Nevada. Dedicated to the riders in the 1960 reenactment of the Pony Express.

2004-2006 Nevada Index Crimes

The figures displayed here represent the latest three calendar-years of data collection and compilation under the state-run Nevada UCR Program. Thirty-seven agencies are currently reporting UCR data, covering 99% of the state's population.

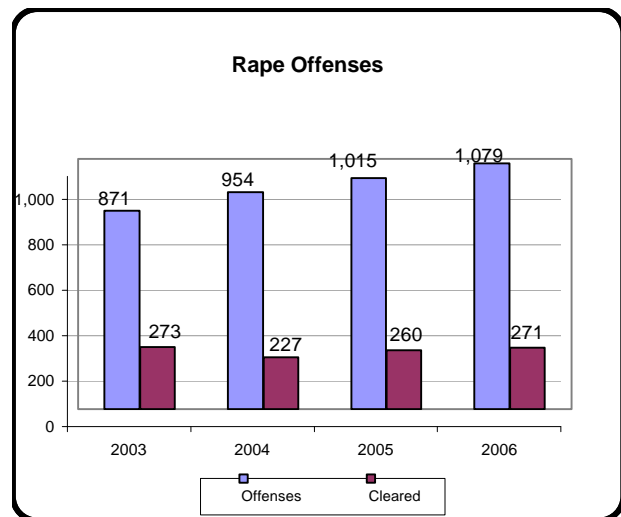
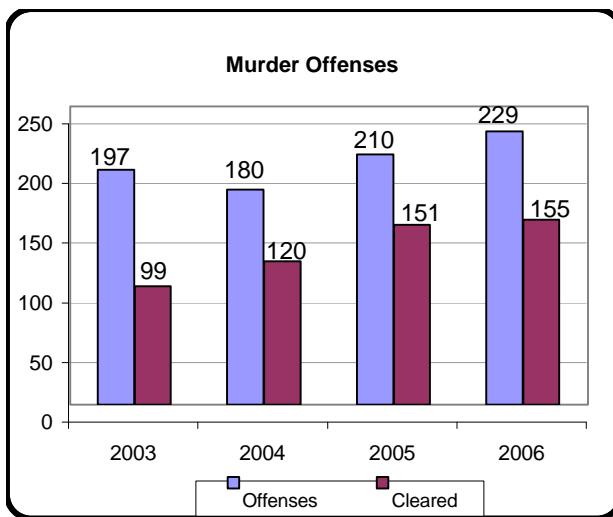
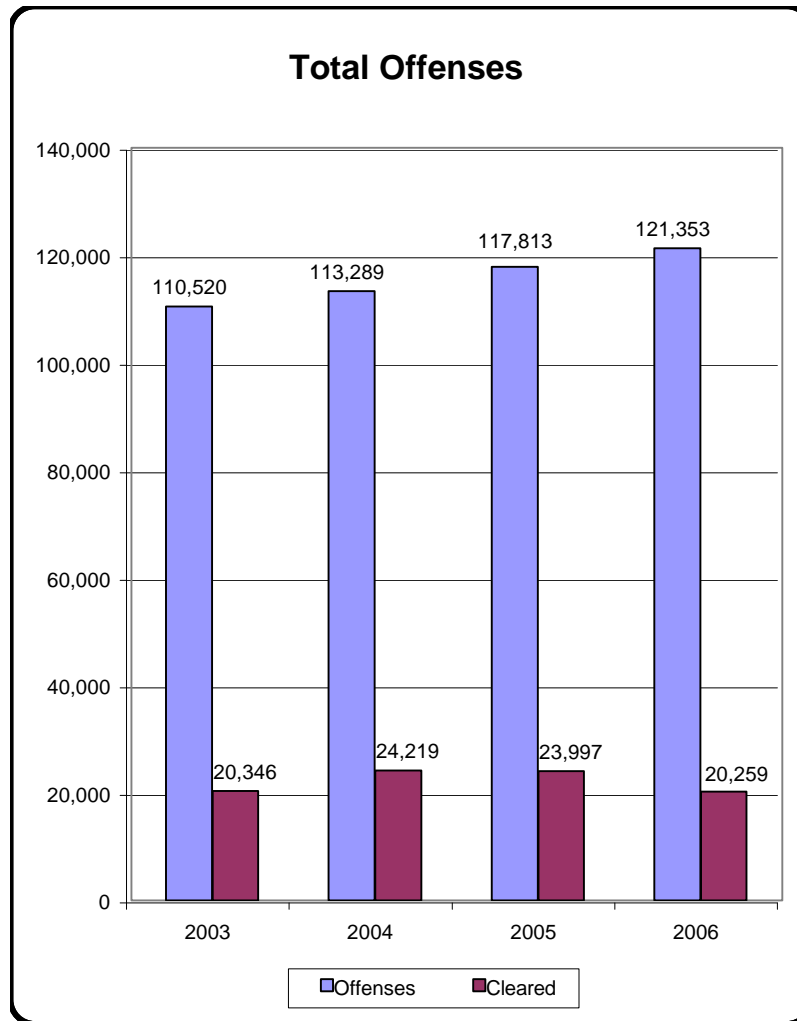
Crime rates as they appear in this publication are per 1,000 population. No attempt is made to incorporate transient populations or other factors which contribute to the ratio and the types of crime in given areas. Any effort to make comparisons of crime rates between areas should be tempered by these population and environmental variables.

Offense	Number of Offenses			Percent of Total			Rate/1,000 Pop		
	2004	2005	2006	2004	2005	2006	2004	2005	2006
Murder	180	210	229	0.16	0.18	0.19	0.07	0.08	0.09
Rape	954	1,015	1,079	0.84	0.86	0.89	0.40	0.40	0.41
Robbery	4,905	4,709	7,027	4.33	4.00	5.79	2.03	1.87	2.68
Aggravated Assault	8,348	8,727	10,178	7.37	7.41	8.39	3.46	3.46	3.88
Burglary	23,137	23,458	24,819	20.42	19.91	20.45	9.60	9.31	9.46
Larceny	52,437	51,983	50,258	46.29	44.12	41.41	21.75	20.64	19.16
MV Theft	22,636	26,934	26,962	19.98	22.86	22.22	9.39	10.69	10.28
Arson	692	777	801	0.61	0.66	0.66	0.29	0.31	0.31
Total	113,289	117,813	121,353	100.00	100.00	100.00	46.99	48.18	46.26

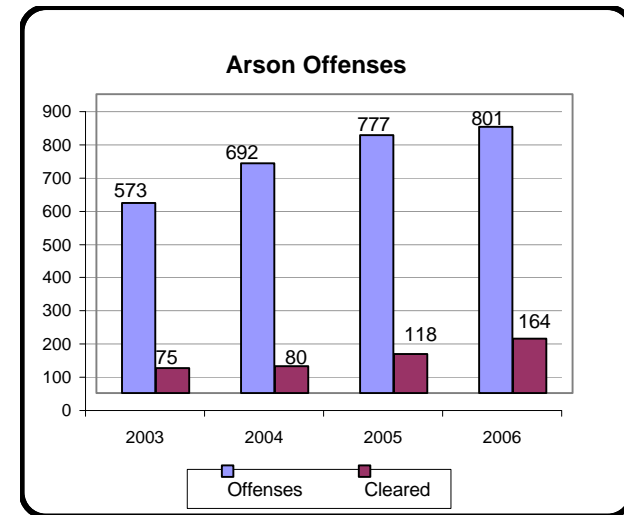
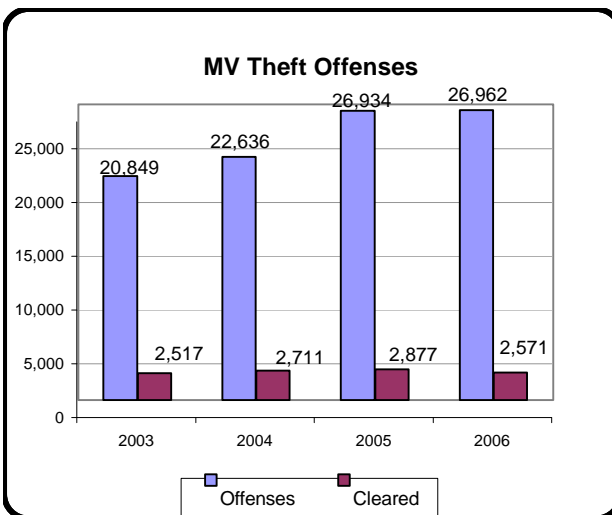
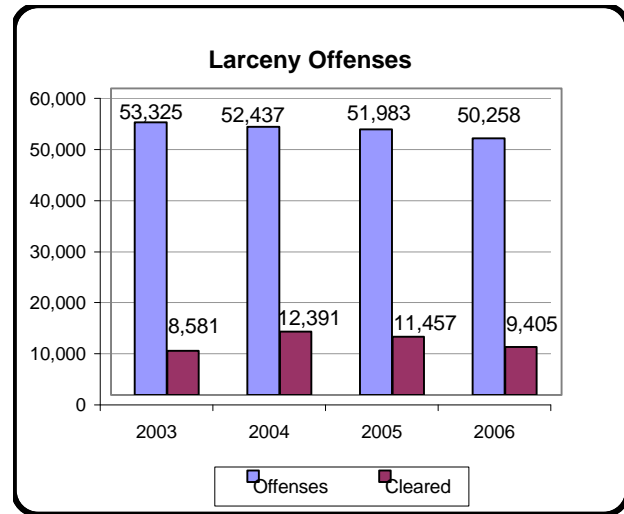
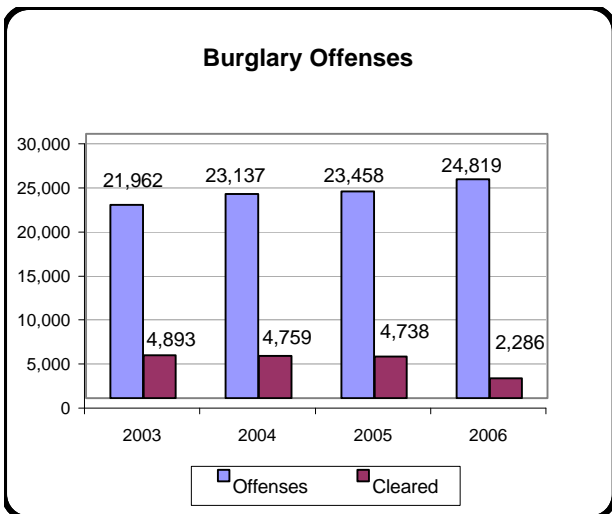
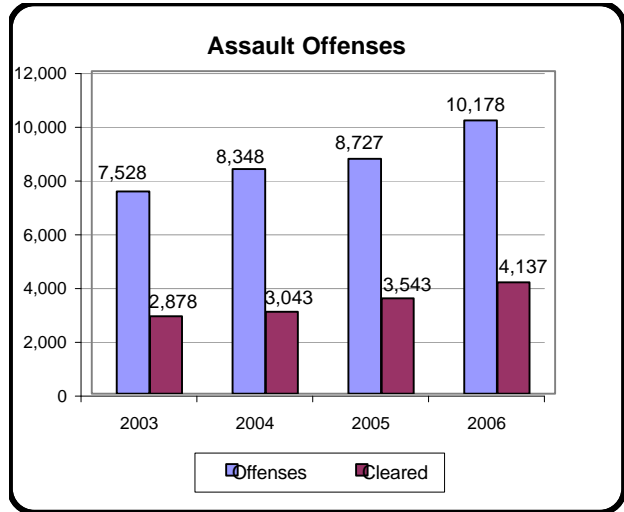
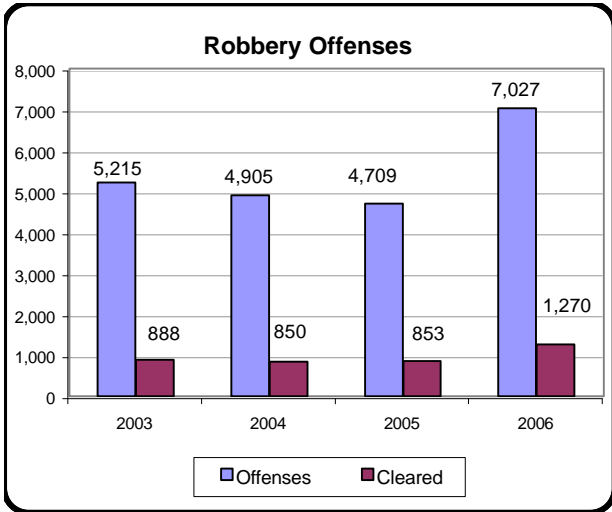


*The criminal statistics within this publication are only those criminal statistics reported to the Uniform Crime Reporting Program by the participating law enforcement agencies.

Nevada Statewide Index Crimes, 2003 - 2006



Nevada Statewide Index Crimes, 2003 - 2006



Statewide Index Crimes/Clearances, Month to Month, 2006

	Murder	Rape	Robbery	Assault	Burglary	Larceny	MV Theft	Arson	Total
January									
# Offenses	16	100	586	796	2,182	4,463	2,639	62	10,844
# Clearances	15	27	63	274	212	1,025	253	12	1,881
February									
# Offenses	18	72	431	664	1,836	3,581	2,330	65	8,997
# Clearances	16	17	73	229	172	757	228	10	1,502
March									
# Offenses	17	78	514	812	2,156	4,232	2,580	86	10,475
# Clearances	11	25	102	259	188	802	227	45	1,659
April									
# Offenses	12	82	548	840	1,913	4,136	2,353	54	9,938
# Clearances	9	18	109	354	170	766	222	14	1,662
May									
# Offenses	19	106	623	1,008	2,084	4,468	2,336	69	10,713
# Clearances	12	24	116	430	219	772	216	15	1,804
June									
# Offenses	19	86	577	924	1,918	4,060	2,269	73	9,926
# Clearances	15	25	120	425	148	682	231	11	1,657
July									
# Offenses	18	102	657	915	2,116	4,062	2,174	110	10,154
# Clearances	8	36	100	371	168	626	206	13	1,528
August									
# Offenses	16	115	663	851	2,183	4,215	2,053	52	10,148
# Clearances	7	28	130	378	195	676	241	3	1,658
September									
# Offenses	24	85	590	942	2,055	4,061	1,883	67	9,707
# Clearances	15	14	117	411	159	690	181	16	1,603
October									
# Offenses	32	89	605	905	2,125	4,211	2,168	61	10,196
# Clearances	13	24	104	387	252	843	175	9	1,807
November									
# Offenses	21	97	641	762	2,082	4,375	2,076	41	10,095
# Clearances	23	13	110	317	214	833	203	9	1,722
December									
# Offenses	17	67	592	759	2,169	4,394	2,101	61	10,160
# Clearances	11	20	126	302	189	933	188	7	1,776
Total									
# Offenses	229	1,079	7,027	10,178	24,819	50,258	26,962	801	121,353
# Clearances	155	271	1,270	4,137	2,286	9,405	2,571	164	20,259
Index Crime Rate									
per 1,000 Population	0.09	0.41	2.68	3.88	9.46	19.16	10.28	0.31	46.26

*The criminal statistics within this publication are only those criminal statistics reported to the Uniform Crime Reporting Program by the participating law enforcement agencies.

Total Index Crimes In Nevada, 1997-2006

	Murder	Rape	Robbery	Assault	Burglary	Larceny	MV Theft	Arson	Total Index Offenses	Rate/ 1,000 Pop.
1997	193	1,008	5,089	7,215	22,038	53,240	13,262	729	102,774	57.74
1998	174	911	4,453	5,710	19,873	47,367	13,766	667	92,921	50.07
1999	165	943	4,209	4,994	17,613	43,167	13,094	624	84,809	43.10
2000	130	860	4,543	4,943	17,526	44,125	13,172	581	85,880	41.55
2001	186	883	4,932	6,337	17,710	45,072	14,703	536	90,359	42.37
2002	184	930	5,119	7,634	18,953	47,461	17,485	630	98,396	44.60
2003	197	871	5,215	7,528	21,962	53,325	20,849	573	110,520	48.12
2004	180	954	4,905	8,348	23,137	52,437	22,636	692	113,289	44.98
2005	210	1,015	4,709	8,727	23,458	51,983	26,934	777	117,813	46.77
2006	229	1,079	7,027	10,178	24,819	50,258	26,962	801	121,353	46.26
TOTAL	1,848	9,454	50,201	71,614	207,089	488,435	182,863	6,610	1,018,114	--
AVERAGE	185	945	5,020	7,161	20,709	48,844	18,286	661	101,811	

*The criminal statistics within this publication are only those criminal statistics reported to the Uniform Crime Reporting Program by the participating law enforcement agencies.

Total 2006 Index Crimes and Clearances by County and Month

	Jan		Feb		Mar		Apr		May		June		July		Aug		Sep		Oct		Nov		Dec		Total Index Crimes	Total Index Crimes Cleared
Carson	134	34	104	28	102	33	102	39	124	39	134	32	120	33	122	40	133	36	109	41	139	41	131	33	1,454	429
Churchill	86	26	52	13	45	32	48	17	59	12	52	26	62	18	90	20	64	19	79	18	54	27	112	30	803	258
Clark	8,485	1,269	7,235	1,013	8,413	1,180	7,899	1,174	8,409	1,285	7,828	1,175	8,003	1,069	7,896	1,192	7,529	1,152	7,975	1,290	7,855	1,183	7,879	1,246	95,406	14,228
Douglas	135	48	86	16	86	21	87	20	89	26	75	14	119	29	117	27	72	20	67	15	81	15	89	19	1,103	270
Elko	134	34	90	18	128	21	98	18	110	21	119	23	105	20	89	22	88	15	84	16	57	18	59	17	1,161	243
Esmeralda	1	1	0	0	1	1	0	0	0	0	2	2	1	1	2	2	2	2	1	0	0	0	0	0	10	9
Eureka	2	1	0	0	1	0	2	0	6	2	3	2	7	1	1	0	2	1	1	0	4	2	2	0	31	9
Humboldt	17	12	19	14	16	9	18	11	25	17	27	15	33	15	20	11	13	6	19	10	12	7	18	11	237	138
Lander	23	8	13	11	13	9	11	8	6	19	6	2	15	10	11	5	8	7	13	7	13	7	15	8	147	101
Lincoln	7	3	2	4	1	3	3	4	3	1	3	2	5	0	8	0	3	2	7	2	7	0	3	0	52	21
Lyon	71	38	79	41	59	23	82	17	69	14	61	11	70	6	68	15	78	16	95	14	84	25	63	20	879	240
Mineral	5	4	6	2	7	1	2	1	5	0	7	2	8	5	2	2	3	2	3	0	5	2	1	0	54	21
Nye	95	42	75	41	98	33	79	28	98	37	79	35	95	35	94	20	83	29	90	37	100	47	104	30	1,090	414
Pershing	13	9	12	5	16	9	14	10	17	11	10	3	17	6	17	7	25	14	15	7	15	8	14	8	185	97
Storey	8	0	9	3	5	1	5	1	5	0	1	0	8	1	3	0	2	0	5	0	9	0	5	0	65	6
Washoe	1,605	345	1,197	289	1,469	278	1,464	306	1,670	316	1,488	299	1,468	270	1,587	287	1,588	277	1,616	343	1,642	333	1,640	347	18,434	3,690
White Pine	23	7	18	4	15	5	24	8	18	4	31	14	18	9	21	8	14	5	17	7	18	7	25	7	242	85
2006 Total	10,844	1,881	8,997	1,502	10,475	1,659	9,938	1,662	10,713	1,804	9,926	1,657	10,154	1,528	10,148	1,658	9,707	1,603	10,196	1,807	10,095	1,722	10,160	1,776	121,353	20,259

*The criminal statistics within this publication are only those criminal statistics reported to the Uniform Crime Reporting Program by the participating law enforcement agencies.

2006 Annual Crimes/Clearances Summary

County/Agency	Est. Pop	Murder		Rape		Robbery		Assault		Burglary		Larceny		MV Theft		Arson		Total Crimes	Crime Rate	Total Clear.	Clear. Percent
Carson County																					
Carson SO	57,701	3	1	2	1	22	13	169	108	291	76	819	179	137	46	11	5	1,454	25.20	429	29.50%
County Total	57,701	3	1	2	1	22	13	169	108	291	76	819	179	137	46	11	5	1,454	25.20	429	29.50%
Churchill County																					
Churchill SO	19,072	1	1	9	15	0	0	42	39	118	44	155	56	22	8	3	3	350	18.35	166	47.43%
Fallon PD	8,299	0	0	0	0	4	1	14	13	62	15	347	53	26	10	0	0	453	54.58	92	20.31%
County Total	27,371	1	1	9	15	4	1	56	52	180	59	502	109	48	18	3	3	803	29.34	258	32.13%
Clark County																					
Boulder PD	15,478	1	0	2	1	5	1	11	9	106	11	126	9	23	1	3	0	277	17.90	32	11.55%
Clark Co. Schools PD*	313,606	0	0	3	0	47	19	60	29	255	43	888	132	45	11	76	24	1,374	4.38	258	18.78%
Henderson PD	251,321	7	1	63	38	237	44	283	170	1,600	257	3,614	598	1,460	43	88	16	7,352	29.25	1,167	15.87%
LV Metro PD	1,391,866	153	104	718	118	5,381	883	6,680	2,195	14,913	868	26,815	5,184	19,677	1,777	311	34	74,648	53.63	11,163	14.95%
LV Fire Dept*																82	14	82	N/A	14	17.07%
Mesquite PD	17,656	1	1	2	1	3	2	25	21	15	4	290	79	55	13	0	0	391	22.15	121	30.95%
North Las Vegas PD	198,516	22	8	57	20	584	93	1,032	467	2,523	171	3,456	527	2,638	112	58	10	10,370	52.24	1,408	13.58%
Taxicab Authority	0	0	0	0	0	34	7	92	23	0	0	414	15	11	0	0	0	551	0.00	45	8.17%
UNLV PD*	30,223	0	0	0	0	2	0	4	1	64	2	246	15	44	2	1	0	361	11.94	20	5.54%
County Total	1,874,837	184	114	845	178	6,293	1,049	8,187	2,915	19,476	1,356	35,849	6,559	23,953	1,959	619	98	95,406	50.89	14,228	14.91%
Douglas County																					
Douglas SO	51,770	2	1	24	14	2	1	59	35	207	46	740	132	61	37	8	4	1,103	21.31	270	24.48%
County Total	51,770	2	1	24	14	2	1	59	35	207	46	740	132	61	37	8	4	1,103	21.31	270	24.48%

*The criminal statistics within this publication are only those statistics reported to the Uniform Crime Reporting Program by the participating law enforcement agencies.

2006 Annual Crimes/Clearances Summary

County/Agency	Est. Pop	Murder		Rape		Robbery		Assault		Burglary		Larceny		MV Theft		Arson		Total Crimes	Crime Rate	Total Clear.	Clear. Percent
Elko County																					
Elko SO (+Wells)	23,004	1	0	6	2	0	0	12	11	87	15	87	11	18	3	3	1	214	9.30	43	20.09%
Carlin PD	2,281	0	0	0	0	0	0	31	25	18	3	9	2	5	1	0	0	63	27.62	31	49.21%
Elko PD	18,183	0	0	7	2	8	3	32	15	135	23	422	40	52	6	8	1	664	36.52	90	13.55%
West Wendover PD	4,871	1	1	2	1	4	2	10	9	49	16	133	33	18	15	3	2	220	45.17	79	35.91%
County Total	48,339	2	1	15	5	12	5	85	60	289	57	651	86	93	25	14	4	1,161	24.02	243	20.93%
Esmeralda County																					
Esmeralda SO	1,262	0	0	0	0	0	0	3	3	1	1	5	4	1	1	0	0	10	7.92	9	90.00%
County Total	1,262	0	0	0	0	0	0	3	3	1	1	5	4	1	1	0	0	10	7.92	9	90.00%
Eureka County																					
Eureka SO	1,460	0	0	1	0	0	0	5	4	9	2	12	2	4	1	0	0	31	21.23	9	29.03%
County Total	1,460	0	0	1	0	0	0	5	4	9	2	12	2	4	1	0	0	31	21.23	9	29.03%
Humboldt County																					
Humboldt SO	10,108	0	0	0	0	2	1	49	47	13	6	30	14	6	5	1	1	101	9.99	74	73.27%
Winnemucca PD	7,643	1	1	2	1	3	2	12	10	32	19	63	19	15	6	8	6	136	17.79	64	47.06%
County Total	17,751	1	1	2	1	5	3	61	57	45	25	93	33	21	11	9	7	237	13.35	138	58.23%
Lander County																					
Lander SO	5,655	0	0	11	9	2	0	30	26	43	29	54	31	7	6	0	0	147	25.99	101	68.71%
County Total	5,655	0	0	11	9	2	0	30	26	43	29	54	31	7	6	0	0	147	25.99	101	68.71%

*The criminal statistics within this publication are only those statistics reported to the Uniform Crime Reporting Program by the participating law enforcement agencies.

2006 Annual Crimes/Clearances Summary

County/Agency	Est. Pop	Murder		Rape		Robbery		Assault		Burglary		Larceny		MV Theft		Arson		Total Crimes	Crime Rate	Total Clear.	Clear. Percent
Lincoln County																					
Lincoln SO	3,987	0	0	0	0	0	0	4	3	8	6	29	5	9	5	2	2	52	13.04	21	40.38%
County Total	3,987	0	0	0	0	0	0	4	3	8	6	29	5	9	5	2	2	52	13.04	21	40.38%
Lyon County																					
Lyon SO	50,774	1	1	5	2	5	2	74	50	207	28	444	76	77	31	17	4	830	16.35	194	23.37%
Yerington PD	3,257	0	0	0	0	0	0	0	0	35	33	14	13	0	0	0	0	49	15.04	46	93.88%
County Total	54,031	1	1	5	2	5	2	74	50	242	61	458	89	77	31	17	4	879	16.27	240	27.30%
Mineral County																					
Mineral SO	4,399	0	0	1	1	0	0	6	6	23	7	18	4	5	2	1	1	54	12.28	21	38.89%
County Total	4,399	0	0	1	1	0	0	6	6	23	7	18	4	5	2	1	1	54	12.28	21	38.89%
Nye County																					
Nye SO	44,795	3	4	9	7	10	5	103	89	270	51	476	155	190	81	29	22	1,090	24.33	414	37.98%
County Total	44,795	3	4	9	7	10	5	103	89	270	51	476	155	190	81	29	22	1,090	24.33	414	37.98%
Pershing County																					
Pershing SO	4,528	1	1	10	0	0	0	62	42	36	6	26	10	2	1	0	0	137	30.26	60	43.80%
Lovelock PD	2,427	0	0	0	2	0	0	8	6	17	14	20	13	3	2	0	0	48	19.78	37	77.08%
County Total	6,955	1	1	10	2	0	0	70	48	53	20	46	23	5	3	0	0	185	26.60	97	52.43%
Storey County																					
Storey SO	4,110	0	0	0	0	0	0	0	0	17	3	45	3	3	0	0	0	65	15.82	6	9.23%
County Total	4,110	0	0	0	0	0	0	0	0	17	3	45	3	3	0	0	0	65	15.82	6	9.23%

*The criminal statistics within this publication are only those statistics reported to the Uniform Crime Reporting Program by the participating law enforcement agencies.

2006 Annual Crimes/Clearances Summary

County/Agency	Est. Pop	Murder		Rape		Robbery		Assault		Burglary		Larceny		MV Theft		Arson		Total Crimes	Crime Rate	Total Clear.	Clear. Percent
Washoe County																					
Washoe SO	106,868	4	1	0	0	22	6	173	95	566	56	846	83	219	52	11	2	1,841	17.23	295	16.02%
Reno PD	214,371	23	24	100	17	523	139	832	405	2,105	176	7,061	1,504	1,631	199	37	3	12,312	57.43	2,467	20.04%
Sparks PD	87,846	3	4	40	17	124	43	213	143	893	241	2,104	312	455	80	20	6	3,852	43.85	846	21.96%
UNR PD*	16,671	0	0	1	0	0	0	5	3	14	1	166	4	12	0	0	0	198	11.88	8	4.04%
Washoe Co Schl PD*	68,366	0	0	0	0	2	2	10	10	23	4	160	54	1	1	18	3	0	0.00	74	0.00%
TMCC PD*	14,161	0	0	0	0	0	0	0	0	3	0	13	0	0	0	1	0	17	1.20	0	0.00%
County Total	409,085	30	29	141	34	671	190	1,233	656	3,604	478	10,350	1,957	2,318	332	87	14	18,220	44.54	3,690	20.25%
White Pine County																					
White Pine SO	9,542	1	1	4	2	1	1	33	25	61	9	111	34	30	13	1	0	242	25.36	85	35.12%
County Total	9,542	1	1	4	2	1	1	33	25	61	9	111	34	30	13	1	0	242	25.36	85	35.12%
Statewide Totals																					
Grand Total	2,623,050	229	155	1,079	271	7,027	1,270	10,178	4,137	24,819	2,286	50,258	9,405	26,962	2,571	801	164	121,353	46.26	20,259	16.69%

* School population figures are not included in the county totals.

These population figures are those reported by the Nevada State Demographer.

*The criminal statistics within this publication are only those statistics reported to the Uniform Crime Reporting Program by the participating law enforcement agencies.

Comparison of Crimes/Clearances

2006

Nevada vs National Index Crime Rates

Per 1,000 Population

	Murder	Rape	Robbery	Assault	Burglary	Larceny	MV Theft	Arson	Total
Nevada									
2003	0.08	0.36	2.16	3.12	9.11	22.12	8.65	0.24	45.84
2004	0.07	0.40	2.03	3.46	9.60	21.75	9.39	0.29	46.99
2005	0.08	0.40	1.87	3.46	9.31	20.64	10.69	0.31	46.77
2006	0.09	0.41	2.68	3.88	9.46	19.16	10.28	0.31	46.26
National									
2003	0.06	0.34	1.42	3.14	7.64	25.23	4.30	0.35	42.47
2004	0.06	0.33	1.37	3.05	7.61	24.65	4.21	0.32	41.60
2005	0.06	0.32	1.41	2.91	7.27	22.86	4.17	0.27	39.27

Nevada vs National Crime Clearance Rates

By Percent

	Murder	Rape	Robbery	Assault	Burglary	Larceny	MV Theft	Arson	Total
Nevada									
2003	50.25	31.34	19.75	38.23	22.28	16.09	12.07	13.09	18.41
2004	65.56	23.79	18.10	36.45	20.57	23.63	11.98	11.56	21.38
2005	71.90	25.62	18.11	40.60	20.20	22.04	10.68	15.19	20.37
2006	67.69	25.12	18.07	40.65	9.21	18.71	9.54	20.47	16.69
National									
2003	62.40	44.00	26.30	55.90	16.40	18.00	13.10	16.70	21.40
2004	62.60	41.80	26.20	55.60	12.90	18.30	13.00	17.10	24.75
2005	62.10	41.30	25.40	55.20	12.70	18.00	13.00	17.70	24.54

*The criminal statistics within this publication are only those criminal statistics reported to the Uniform Crime Reporting Program by the participating law enforcement agencies.

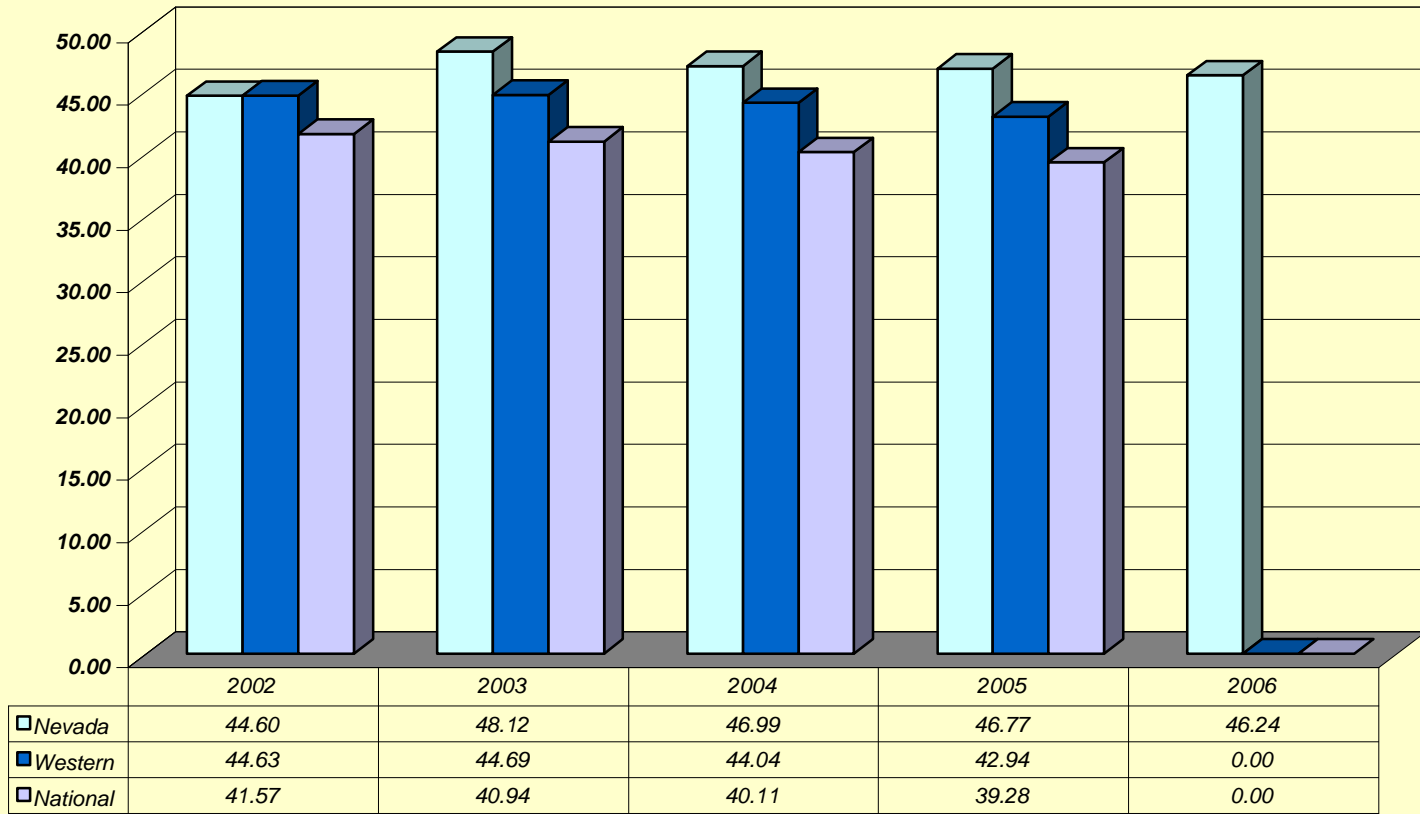
Comparison of Index Crime Rates per 1,000 population 2002-2006

	Murder	Rape	Robbery	Assault	Burglary	Larceny	MV Theft	Arson	Total
2002									
Nevada	0.08	0.42	2.32	3.46	8.59	21.51	7.93	0.29	44.60
Western	0.06	0.34	1.46	3.23	7.53	25.40	6.25	0.36	44.63
National	0.06	0.33	1.46	3.10	7.47	24.51	4.33	0.32	41.57
2003									
Nevada	0.086	0.379	2.271	3.278	9.563	23.219	9.078	0.250	48.12
Western	0.057	0.337	1.419	3.138	7.636	25.229	6.528	0.350	44.69
National	0.057	0.321	1.422	2.950	7.405	24.145	4.334	0.304	40.94
2004									
Nevada	0.07	0.38	1.95	3.31	9.19	20.82	8.99	0.27	46.99
Western	0.06	0.33	1.37	3.05	7.61	24.65	6.65	0.32	44.04
National	0.06	0.32	1.37	2.91	7.30	23.66	4.21	0.28	40.11
2005									
Nevada	0.08	0.39	1.80	3.33	8.94	19.82	10.27	0.30	44.91
Western	0.06	0.33	1.38	2.92	7.57	23.52	6.85	0.31	42.94
National	0.06	0.32	1.41	2.91	7.27	22.86	4.18	0.27	39.28
2006									
Nevada	0.09	0.41	2.68	3.88	9.46	19.16	10.28	0.31	46.26
Western	n/a	n/a	n/a	n/a	n/a	n/a	n/a	n/a	n/a
National	n/a	n/a	n/a	n/a	n/a	n/a	n/a	n/a	n/a

The Western States consist of Arizona, Colorado, Idaho, Montana, Nevada, New Mexico, Utah and Wyoming.

*The criminal statistics within this publication are only those criminal statistics reported to the Uniform Crime Reporting Program by the participating law enforcement agencies.

Total Index Crime Rates Nevada, Western States, National



*The criminal statistics within this publication are only those criminal statistics reported to the Uniform Crime Reporting Program by the participating law enforcement agencies.

VIOLENT CRIMES

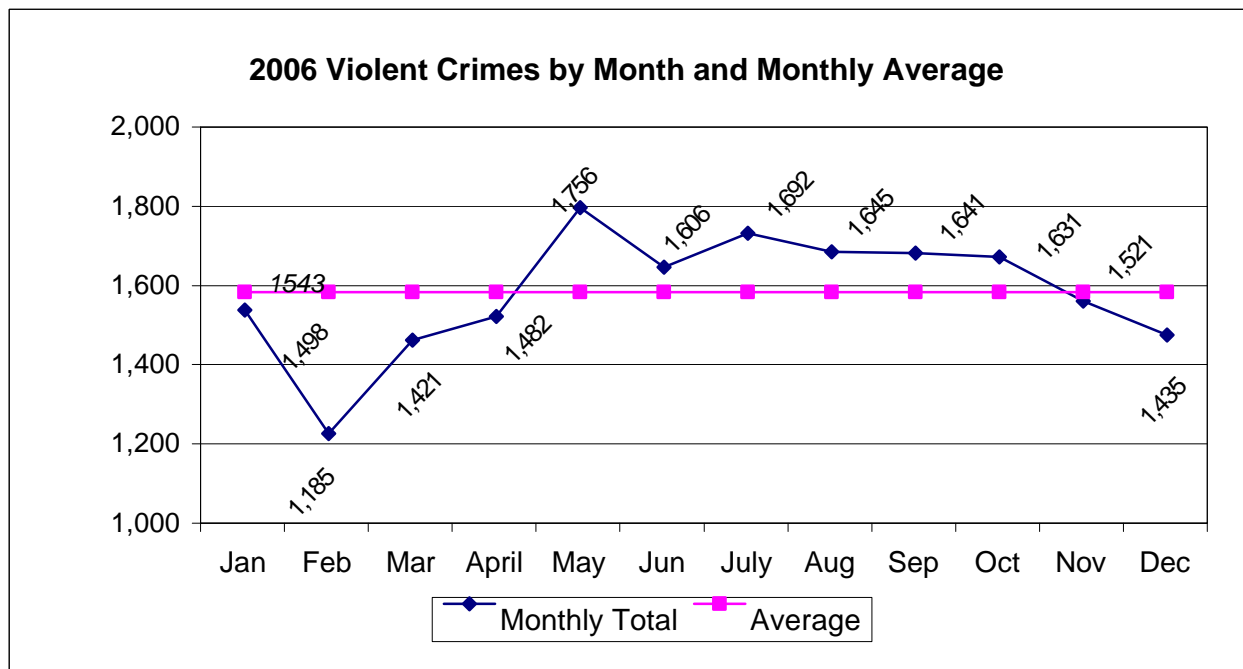
2006

Crime Clock - One Violent Crime Every 28 Minutes, 23 Seconds

Crimes of violence involve the element of personal confrontation between the perpetrator and victim and entail the threat or use of violence. By their very nature, violent crimes (murder, rape, robbery and aggravated assault) are considered more serious than property crimes. The total number indicates only the number of incidents reported to enforcement and does not reflect the number of criminals who committed them or the number of injuries inflicted.

The 2006 violent crime rate in Nevada was 7.1 offenses per 1,000 population. Violent crimes represented 15.3% of all reported index crimes. Enforcement agencies cleared 5,833 violent crimes for a 31.5% clearance rate.

	2004	2005	Number Change	Percent Change	2005	2006	Number Change	Percent Change
Murder	180	210	30	16.7%	210	229	19	9.0%
Rape	954	1,015	61	6.4%	1,015	1,079	64	6.3%
Robbery	4,905	4,709	-196	-4.0%	4,709	7,027	2,318	49.2%
Agg. Assault	8,348	8,727	379	4.5%	8,727	10,178	1,451	16.6%
Totals	14,387	14,661	274	1.9%	14,661	18,513	3,852	26.3%



*The criminal statistics within this publication are only those criminal statistics reported to the Uniform Crime Reporting Program by the participating law enforcement agencies.

PROPERTY CRIMES

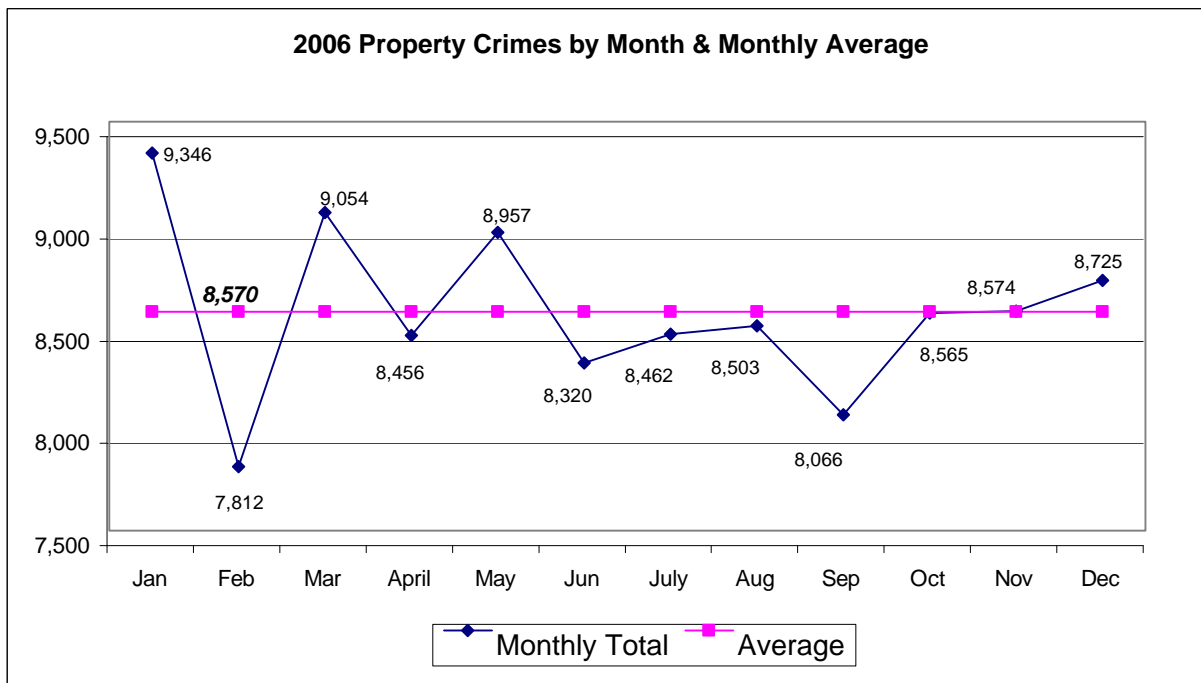
2006

Crime Clock - One Property Crime Every 5 Minutes, 7 Seconds

Property crimes include burglary, larceny, motor vehicle theft and arson. These crimes do not involve the threat of violence, but entail property taken from one by another, or the destruction of property by arson. Because arson is the most recent addition to the crime index, to this point in time, the UCR Program has not fully reported it along with the other offenses. The reason for this is not all agencies participating in the UCR Program have consistently reported arson information, thus data reliability is still marginal.

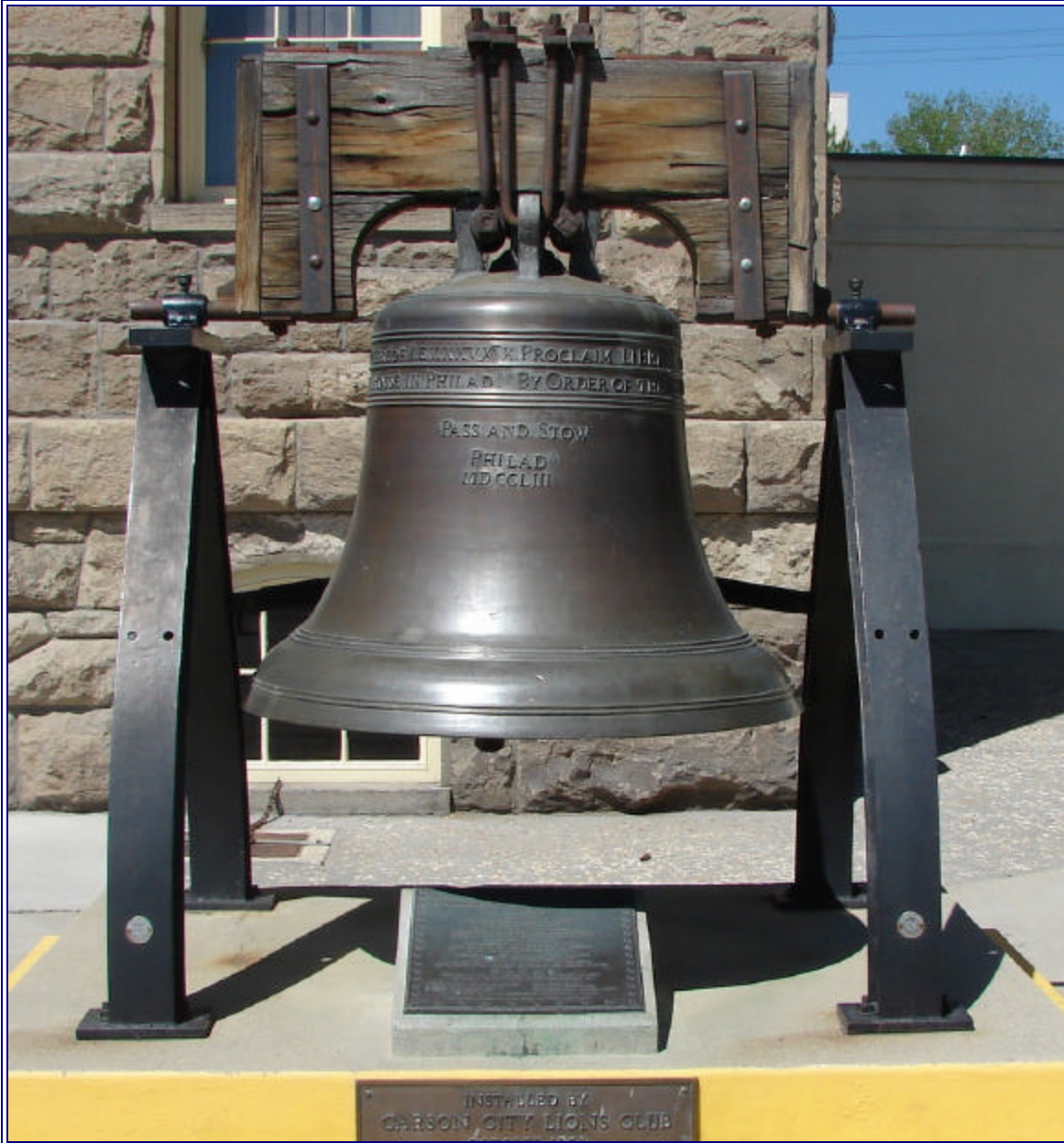
There were 102,840 property crimes reported in 2006, representing 84.7% of total reported index crimes. Enforcement agencies cleared 14,426 (14.0%) of the property offenses. Nevada's property crime rate per 1,000 population in 2006 was 39.2.

	2004	2005	Number Change	Percent Change	2005	2006	Number Change	Percent Change
Burglary	23,137	23,458	321	1.4%	23,458	24,819	1,361	5.8%
Larceny	52,437	51,983	-454	-0.9%	51,983	50,258	-1,725	-3.3%
MV Theft	22,636	26,934	4,298	19.0%	26,934	26,962	28	0.1%
Arson	692	777	85	12.3%	777	801	24	3.1%
Totals	98,902	103,152	4,250	4.3%	103,152	102,840	-312	-0.3%



*The criminal statistics within this publication are only those criminal statistics reported to the Uniform Crime Reporting Program by the participating law enforcement agencies.

Murder



A reproduction of the Liberty Bell located in front of the Nevada State Museum in Carson City, Nevada. "Dedicated to You, A Free Citizen in a Free Land" Also written on the plaque "In standing before this symbol, you have the opportunity to dedicate yourself as our Founding Fathers, to the principles of the individual freedom for which our Nation stands." Installed by the Lyons Club in 1950. This bell is one of 53 cast in France in 1950. Before resting here it was displayed in every part of this State as part of the US Saving Bond drive from May 15-July 4, 1950.



MURDER AND NON-NEGLIGENT MANSLAUGHTER

2006

Crime Clock - One Murder Every 1 Day, 14 Hours

Murder and non-negligent manslaughter are described by UCR as the willful (non-negligent) killing of one human being by another, or, if the death is the result of the commission of another criminal act.

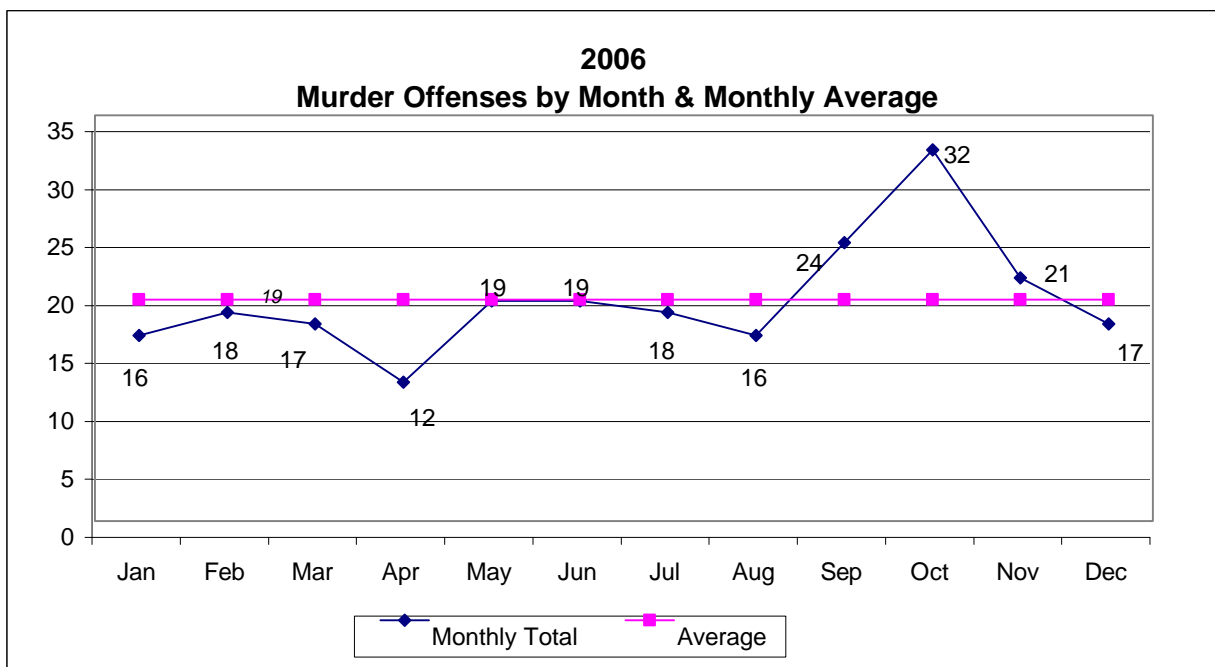
Murder--NRS 200.010: "Murder is the unlawful killing of a human being with malice aforethought, either express or implied, or caused by a controlled substance which was sold, given, traded or otherwise made available to a person in violation of Chapter 453 of NRS."

Manslaughter--NRS 200.040: (1) "Manslaughter: (a) Is the unlawful killing of a human being, without malice express or implied, and without any mixture of deliberation...(2) Manslaughter must be voluntary, upon a sudden heat of passion, caused by provocation apparently sufficient to make the passion irresistible; or, involuntary, in the commission of an unlawful act..."

Included in this publication's count for this offense classification are deaths caused by negligence. Although manslaughter by negligence is recorded on the "offense known to police" form along with murder, it is not considered by the UCR Program to be an index offense. Attempts to murder or assaults to murder are scored as aggravated assaults and not murder.

Trends

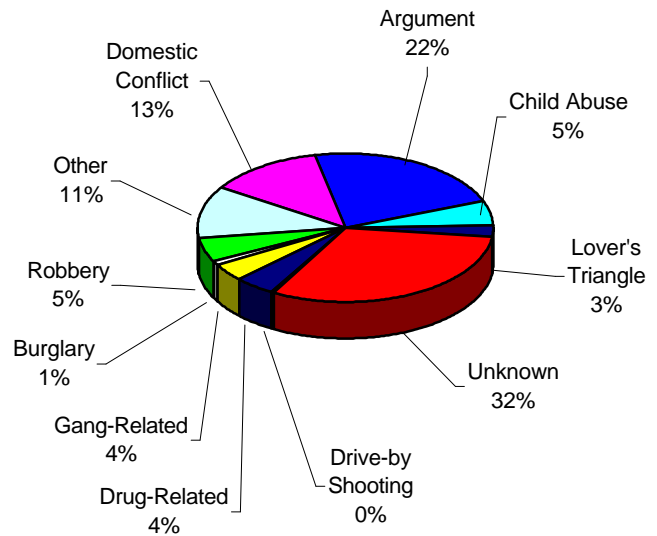
	Number Reported	% Change from Previous Year	Rate/1,000
2002	184	-1.1%	0.08
2003	197	7.1%	0.09
2004	180	-8.6%	0.07
2005	210	16.7%	0.08
2006	229	9.0%	0.09



*The criminal statistics within this publication are only those criminal statistics reported to the Uniform Crime Reporting Program by the participating law enforcement agencies. 33

Murder Distribution by Circumstances and Relationship

Circumstances*	Number	% of Total
Burglary	2	1%
Robbery	12	5%
Other	26	11%
Domestic Conflict	29	13%
Argument	51	22%
Child Abuse	12	5%
Lover's Triangle	6	3%
Unknown	71	31%
Drive-by Shooting	1	0%
Drug-Related	10	4%
Gang-Related	9	4%
Total	229	100%



*Due to the unlimited set of possible circumstances surrounding homicides, it is difficult to provide clear-cut or precise statistical categories for all. To achieve uniformity, the number of circumstance categories has been kept to a minimum. Caution is suggested in drawing generalizations from the data without more deliberate analysis. This table makes no attempt to analyze the motives of offenders, but rather to display general circumstances surrounding events. Also note that it is possible to have more than one victim/murder for each circumstance.

**The number of relationships may not agree with the number of victims due to instances of multiple offenders or victims.

Relationship - Victim to Offender**	Number					% of Total				
	2002	2003	2004	2005	2006	2002	2003	2004	2005	2006
Wife	11	6	9	7	12	5.8%	5.1%	5.1%	3.3%	5.2%
Husband	1	1	4	1	4	0.5%	2.3%	2.3%	0.5%	1.7%
Son	2	4	4	2	5	1.0%	2.3%	2.3%	1.0%	2.2%
Daughter	2	2	3	4	4	1.0%	1.7%	1.7%	1.9%	1.7%
Other Family Member	8	4	8	12	4	4.2%	4.5%	4.5%	5.7%	1.7%
Total Family	24	17	28	26	29	12.6%	15.8%	15.8%	12.4%	12.7%
Dating Relationship	5	7	11	14	13	2.6%	6.2%	6.2%	6.7%	5.7%
Former Spouse	2	1	0	1	2	1.0%	0.0%	0.0%	0.5%	0.9%
Former Cohabitant	1	4	1	2	0	0.5%	0.6%	0.6%	1.0%	0.0%
Friend	13	4	1	2	14	6.8%	0.6%	0.6%	1.0%	6.1%
Acquaintance	36	31	40	42	43	18.8%	22.6%	22.6%	20.0%	18.8%
Stranger	21	14	17	30	26	11.0%	9.6%	9.6%	14.3%	11.4%
Unknown	89	105	79	93	102	46.6%	44.6%	44.6%	44.3%	44.5%
Total Other	167	166	149	184	200	87.4%	84.2%	84.2%	87.6%	87.3%
Total	191	183	177	210	229	100%	100%	100%	100%	100%

Murder Distribution by Age, Sex and Weapon, 2002 - 2006

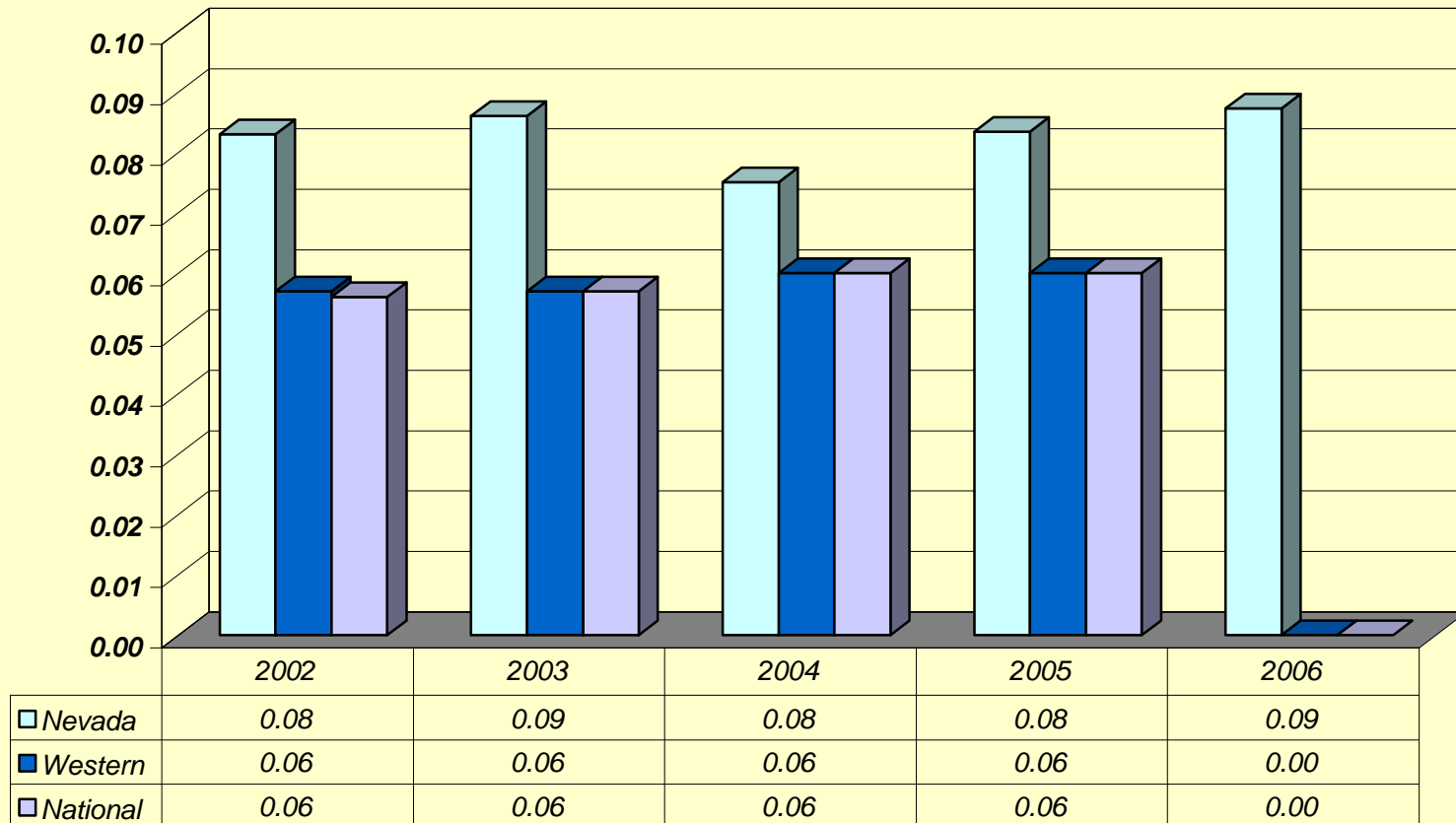
Victims	Male						Female					Cumulative Total
	2002	2003	2004	2005	2006		2002	2003	2004	2005	2006	
00 - 14	6	7	7	12	12		7	7	4	6	4	72
15 - 24	51	32	41	48	57		4	14	5	8	14	274
25 - 34	36	42	56	37	35		9	14	11	13	8	261
35 - 44	31	22	20	31	32		11	12	6	10	11	186
45 - 54	14	15	18	21	15		7	3	7	3	11	114
55 - 64	8	10	4	8	8		4	3	0	2	5	52
65+	3	4	6	2	8		3	5	5	5	6	47
Unknown	4	1	5	6	3		0	1	3	1	0	24
Total	153	133	157	165	170		45	59	41	48	59	1,030

Offenders	Male						Female					Cumulative Total
	2002	2003	2004	2005	2006		2002	2003	2004	2005	2006	
00 - 14	3	0	2	2	0		0	1	0	0	0	8
15 - 24	49	35	34	48	55		2	2	4	1	0	230
25 - 34	38	25	20	36	38		2	3	4	6	7	172
35 - 44	20	10	13	26	18		0	4	1	5	5	97
45 - 54	6	8	13	8	11		1	1	1	2	3	51
55 - 64	4	2	7	6	7		2	0	1	0	13	29
65+	3	3	3	3	9		1	2	0	1	0	25
Unknown*	93	90	73	76	90		0	7	2	1	0	589
Total	216	173	165	205	228		8	20	13	16	28	1,201

* 5 year compilation when the sex of the offender is unknown

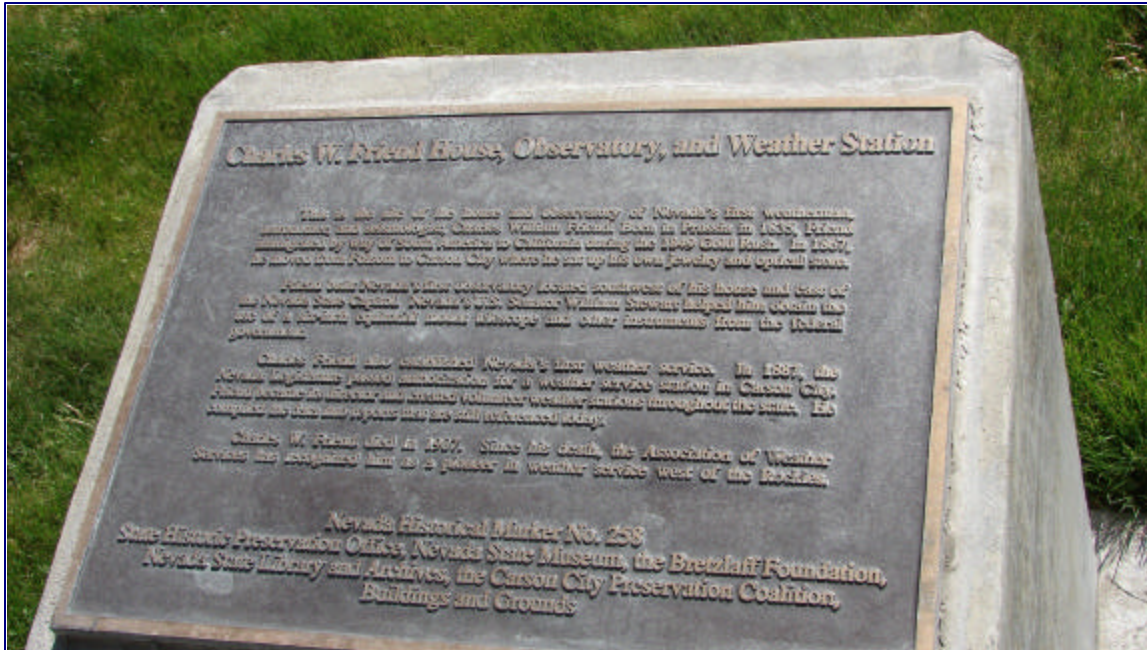
Weapon	Number						% of Total				
	2002	2003	2004	2005	2006		2002	2003	2004	2005	2006
Handgun	106	102	77	86	104		52.2%	55.1%	40.3%	41.0%	44.3%
Long-gun	15	9	12	9	12		7.4%	4.9%	6.3%	4.3%	5.1%
Firearm, Unknown	6	3	31	33	21		3.0%	1.6%	16.2%	15.7%	8.9%
Knife, Cutting Device	27	22	23	28	37		13.3%	11.9%	12.0%	13.3%	15.7%
Hands, Fists, Feet	11	10	17	13	15		5.4%	5.4%	8.9%	6.2%	6.4%
Blunt Inst.	15	18	15	18	21		7.4%	9.7%	7.9%	8.6%	8.9%
Fire/Smoke Inhalation	2	1	1	1	14		1.0%	0.5%	0.5%	0.5%	6.0%
Asphyxiation/ Gas	5	9	2	8	4		2.5%	4.9%	1.0%	3.8%	1.7%
Unknown	12	6	2	8	6		5.9%	3.2%	1.0%	3.8%	2.6%
Other	4	5	11	6	1		2.0%	2.7%	5.8%	2.9%	0.4%
Total	203	185	191	210	235		100%	100%	100%	100%	100%

Murder Rates Nevada, Western States, National



*The criminal statistics within this publication are only those criminal statistics reported to the Uniform Crime Reporting Program by the participating law enforcement agencies.

Rape



Charles W. Friend House, Observatory, and Weather Station located at the corner of Musser and Stewart Streets, Carson City, Nevada. This site marks the house and observatory of Nevada's first weatherman, astronomer, and seismologist.



Chinatown Plaque located at the corner of Third and Stewart Streets, Carson City, Nevada. This site marks one of Nevada's largest Chinese communities. Placed October 31, 2003.



Centennial Time Capsule located at Nevada State Museum, Carson City, Nevada. Presented to Grant Sawyer, Governor by the Centennial Committee on October 31, 1964.



FORCIBLE RAPE

2006

Crime Clock - One Rape Every 8 Hours, 7 Minutes

Forcible rape, as defined in the UCR Program, is the carnal knowledge of a female forcibly and against her will. Assaults or attempts to commit rape by force or threat of force are also included. Statutory rape (without force) and other sex offenses are excluded.

Sexual Assault--NRS 200.366: (1) "A person who subjects another person to sexual penetration, or who forces another person to make a sexual penetration on himself or another, or on a beast, against the victim's will or under conditions in which the perpetrator knows or should know that the victim is mentally or physically incapable of resisting or understanding the nature of his conduct, is guilty of sexual assault."

Forcible rape differs from other violent crimes in that the victim, in many cases, is reluctant to report the offense to police. The investigation by police, medical examination, court procedure, embarrassment and fear of accompanying stigma all have a deterrent effect on the victim's willingness to make the offense known to police.

Most rapes in Nevada in 2006 occurred during the months of May, July and August accounting for 323 (29.94%) of the yearly total of 1079. August had the highest monthly total at 115 (10.66%).

Law enforcement was able to clear 25.12% of forcible rapes in 2006.

Trends

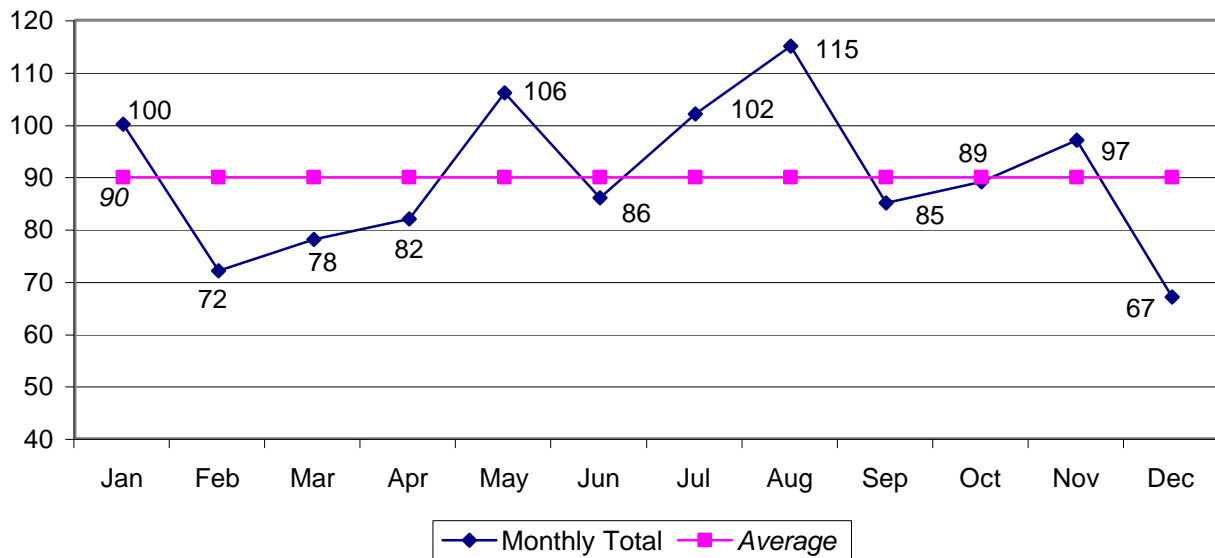
	Number Reported	% Change from Previous Year	Rate/1,000
2002	602	-31.82%	0.27
2003	871	44.68%	0.38
2004	954	9.53%	0.40
2005	1,015	6.39%	0.39
2006	1,079	6.31%	0.41

Forcible and Attempted Rapes

	Forcible	Attempted	Total
2002	744	186	930
2003	723	148	871
2004	776	178	954
2005	818	197	1,015
2006	923	156	1,079

*The criminal statistics within this publication are only those criminal statistics reported to the Uniform Crime Reporting Program by the participating law enforcement agencies: 37

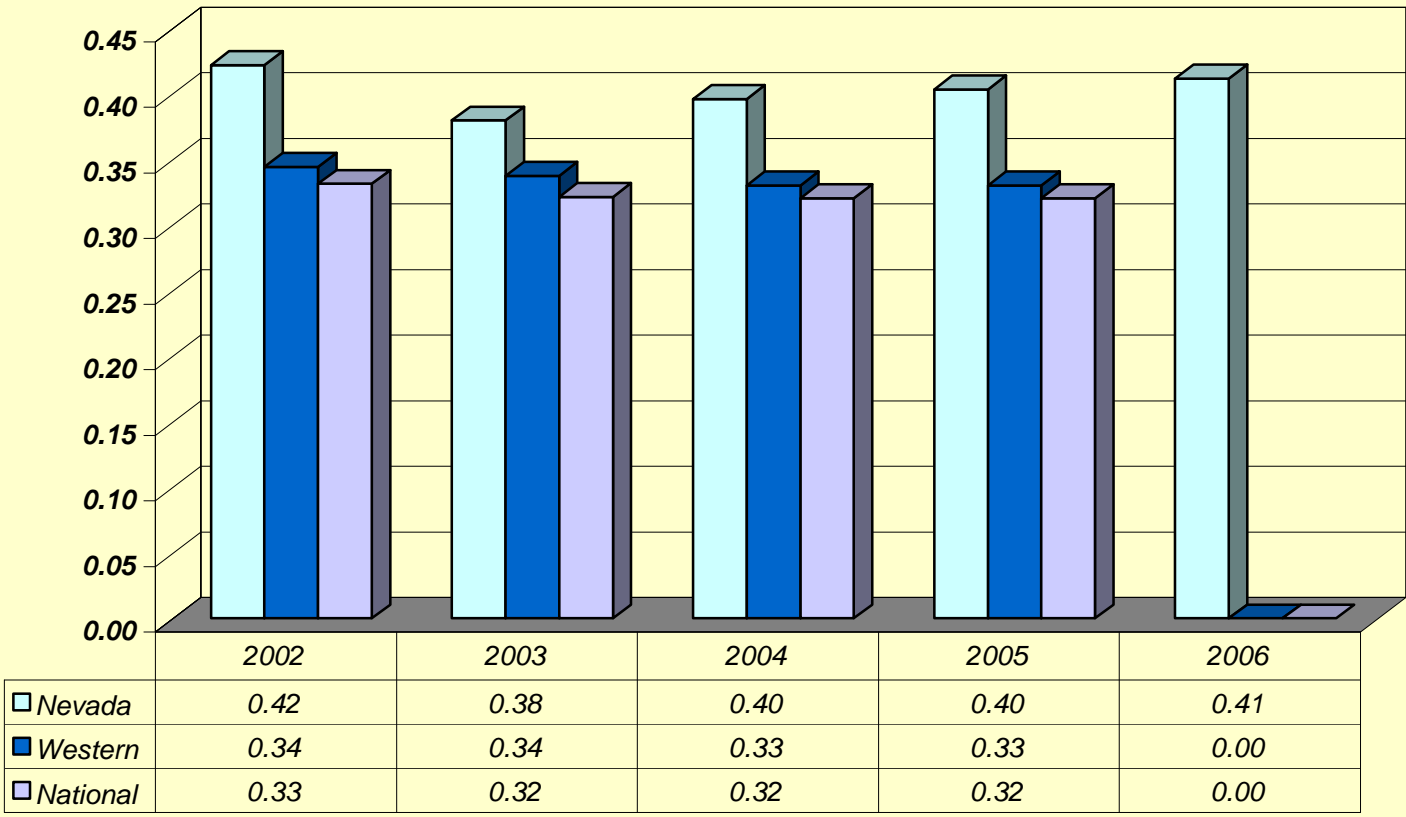
2006 Rape Offenses by Month & Monthly Average



Profile of Persons Arrested

AGE	2002	2003	2004	2005	2006	5-year Total
17 and Under	28	31	36	29	26	150
18-24	44	86	36	50	42	258
25-29	18	38	31	27	31	145
30-34	30	43	29	20	23	145
35-39	42	41	21	23	29	156
40 and Over	60	73	52	49	54	288
Total	222	312	205	198	205	1,142
Male	221	311	204	196	202	1,134
Female	1	1	2	2	3	9

Rape Rates Nevada, Western States, National



Robbery



Tribute to Miners located on the Legislative Plaza, Carson City, Nevada. Adolph Sutro, 1830-1898. A gift from the Nevada Mining Industry. October 31, 1983.

ROBBERY

2006

Crime Clock - One Robbery Every 1 Hour, 15 Minutes

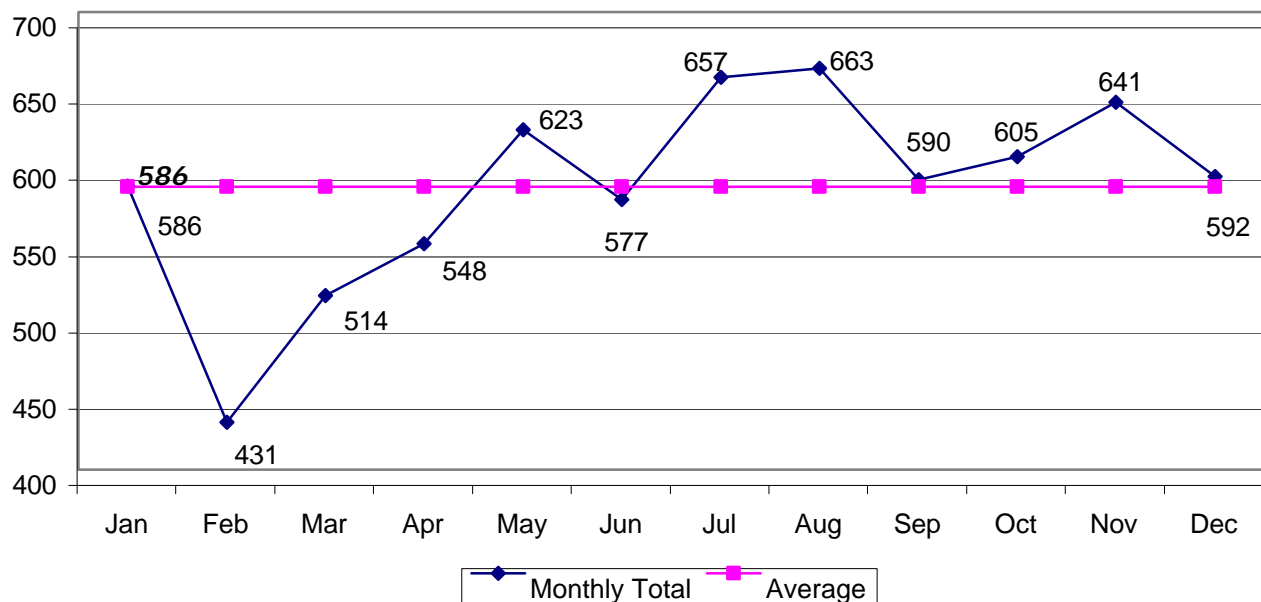
Robbery is defined by UCR as "the felonious and forcible taking of the property of another against his will by violence or by putting him in fear." All attempts to rob are included in the UCR report.

Robbery--NRS 200.380: "Robbery is the unlawful taking of personal property from the person of another, or in the presence, against his will, by means of force or violence or fear of injury, immediate or future, to his person or property, or the person or property of a member of his family, or of anyone in his company at the time of the robbery. A taking is by means of force or fear if used to: (a) Obtain or retain possession of the property; (b) Prevent or overcome resistance to the taking; or (c) Facilitate escape. The degree of force used is immaterial if it is used to compel acquiescence to the taking of or escaping with the property. A taking constitutes robbery whenever it appears that, although the taking was fully completed without the knowledge of the person from whom taken, such knowledge was prevented by the use of force or fear."

Trends

	Number Reported	% Change from Previous Year	Rate/1,000
2002	5,119	3.79%	2.32
2003	5,215	1.88%	2.27
2004	4,905	-5.94%	2.03
2005	4,709	-4.00%	1.80
2006	7,027	49.22%	2.68

2006 Robbery Offenses by Month & Monthly Average



*The criminal statistics within this publication are only those criminal statistics reported to the Uniform Crime Reporting Program by the participating law enforcement agencies.

Robbery

Weapon Types, Persons Arrested, Offenses by Location

Weapon Types Used

TYPE	2002	2003	2004	2005	2006	5-year Total
Firearm	2,023	2,107	2,019	1,992	3,476	11,617
Knife	500	515	494	525	612	2,646
Other Weapon	476	410	398	422	483	2,189
Strong Arm	2,120	2,183	1,994	1,770	2,456	10,523
Total	5,119	5,215	4,905	4,709	7,027	26,975

Profile of Persons Arrested

AGE	2002	2003	2004	2005	2006	5-year Total
17 and Under	269	235	190	191	252	1,137
18-24	494	460	447	478	631	2,510
25-29	167	194	158	202	268	989
30-34	127	127	134	110	155	653
35-39	120	131	104	83	139	577
40 and Over	181	179	180	147	205	892
Total	1,358	1,326	1,213	1,211	1,650	6,758
Male	1,226	1,171	1,091	1,077	1,455	6,020
Female	132	155	155	134	195	771

Classification by Location and Number of Offenses

LOCATION	2002	2003	2004	2005	2006	5-year Total
Highway, Street, Alley, etc.	1,618	1,799	1,724	1,639	2,125	8,905
Commercial House	1,251	1,271	1,144	1,064	1,601	6,331
Gas/Service Station	42	53	42	43	93	273
Convenience Store	331	374	326	356	485	1,872
Residence	766	801	626	675	957	3,825
Bank/Lending Inst.	165	128	173	113	158	737
Miscellaneous	946	789	869	818	1,608	5,030
Total	5,119	5,215	4,904	4,708	7,027	26,973

*The criminal statistics within this publication are only those criminal statistics reported to the Uniform Crime Reporting Program by the participating law enforcement agencies.

Robbery Value of Property Stolen in Nevada

Classification by Location and Value of Property Stolen

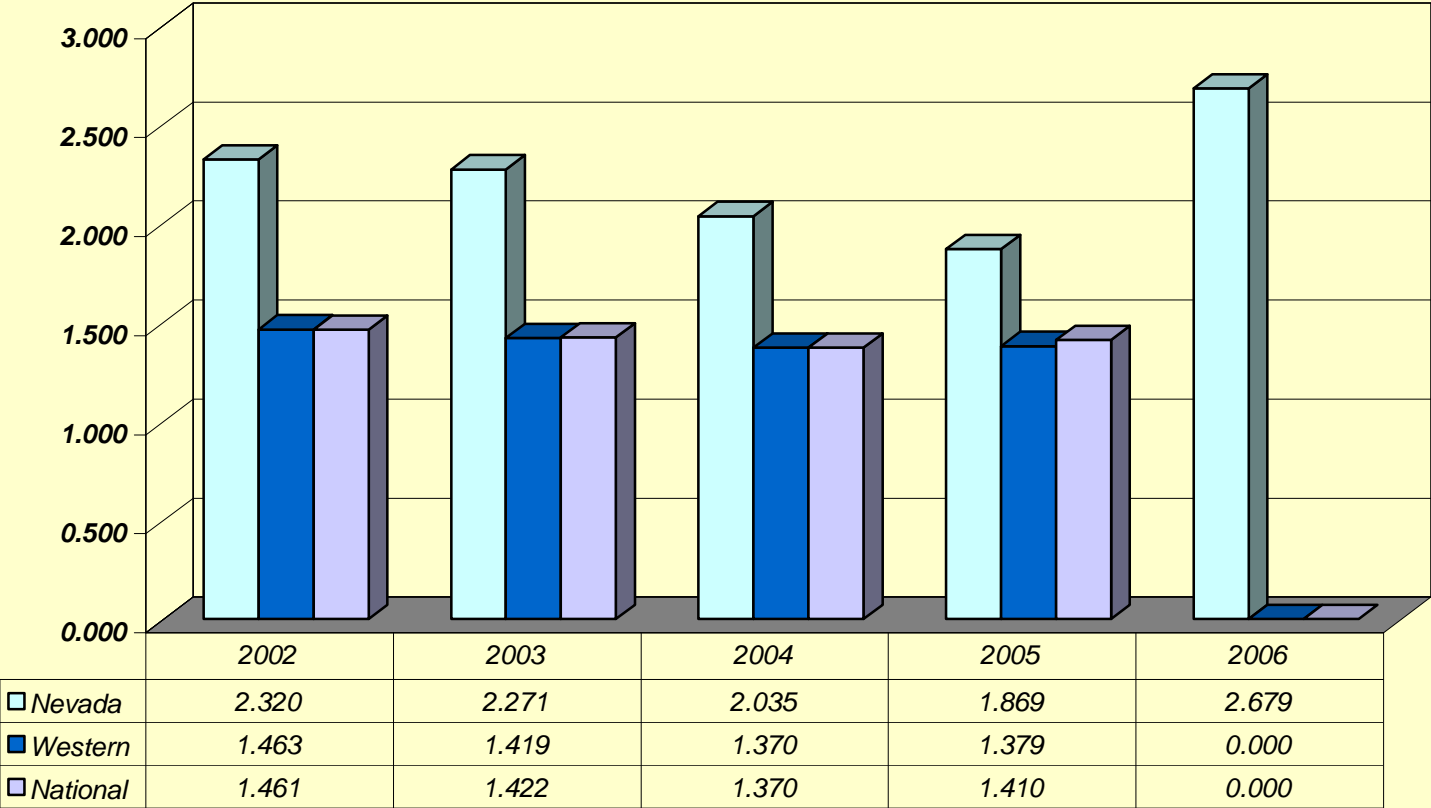
LOCATION	2002	2003	2004	2005	2006	5-year Total
Highway, Street, Alley, etc.	\$1,661,682	\$1,811,916	\$1,629,243	\$1,301,103	\$2,020,017	\$8,423,961
Commercial House	\$4,109,714	\$3,349,369	\$1,624,226	\$1,363,353	\$3,338,345	\$13,785,007
Gas/Service Station	\$24,709	\$30,598	\$67,314	\$28,040	\$58,219	\$208,880
Convenience Store	\$83,480	\$148,506	\$123,052	\$120,280	\$349,639	\$824,957
Residence	\$1,028,178	\$1,461,468	\$955,348	\$698,915	\$1,254,160	\$5,398,069
Bank/Lending Inst.	\$905,112	\$488,734	\$740,429	\$462,565	\$1,043,759	\$3,640,599
Miscellaneous	\$1,400,288	\$1,001,398	\$1,043,088	\$812,597	\$2,254,129	\$6,511,500
Total	\$9,213,163	\$8,291,990	\$6,182,700	\$4,786,853	\$10,318,268	\$38,792,974

Classification by Location and Value of Property Stolen

LOCATION	2002	2003	2004	2005	2006
Highway, Street, Alley, etc.	18.0%	21.9%	26.4%	19.5%	19.6%
Commercial House	44.6%	40.4%	26.3%	32.1%	32.4%
Gas/Service Station	0.3%	0.4%	1.1%	0.6%	0.6%
Convenience Store	0.9%	1.8%	2.0%	3.4%	3.4%
Residence	11.2%	17.6%	15.5%	10.0%	12.2%
Bank/Lending Inst.	9.8%	5.9%	12.0%	10.7%	10.1%
Miscellaneous	15.2%	12.1%	16.9%	23.7%	21.8%
Total	100.0%	100.0%	100.0%	100.0%	100.0%

*The criminal statistics within this publication are only those criminal statistics reported to the Uniform Crime Reporting Program by the participating law enforcement agencies.

Robbery Rates Nevada, Western States, National



*The criminal statistics within this publication are only those criminal statistics reported to the Uniform Crime Reporting Program by the participating law enforcement agencies.

Aggravated Assault



Guy Shipler 1913-1996. Located inside the Capitol, Carson City, Nevada. He was Dean of the Press Corps, was known for his fairness, integrity, courage, dedication to his profession, and for his service on the Nevada Judicial Discipline Commission.



Chris Schaller 1935-1984. Located inside the Capitol, Carson City, Nevada. He was a journalist, public servant, and humanitarian who served with distinction on the staffs of Nevada Governors Sawyer, O'Callaghan, and List, and the US Senator Bible.

AGGRAVATED ASSAULT

2006

Crime Clock - One Aggravated Assault Every 59 Minutes, 24 Seconds

An aggravated assault is an attempt or offer, with unlawful force or violence, to do physical injury to another. This type of assault is usually accompanied by the use of a weapon or other means likely to produce death or serious bodily injury. Attempts are included since it is not necessary that an injury result when a gun, knife, or other weapon is used which could and probably would result in serious personal injury if the crime is successfully completed. Assaults with personal weapons (hands, fists, feet) are scored as aggravated if there is personal injury requiring more than simple first-aid treatment.

Assault--NRS 200.471: (1) "...means an unlawful attempt, coupled with a present ability, to commit a violent injury on the person of another...(2) (b)...use of a deadly weapon, or the present ability to use a deadly weapon..."

Battery--NRS 200.481: (1) (a) "...means any willful and unlawful use of force or violence upon the person of another."

Not included in this class are simple (non-aggravated) assaults. Simple assaults are non-index offenses, although a record is kept of these assaults on the "Offenses Known to Police" form. During 2006, there were 36,441 simple assaults reported in Nevada, with a clearance rate of 46.37%.

There were 10,178 aggravated assault offenses reported to enforcement in 2006. The range went from 664 in February to 1,008 in May.

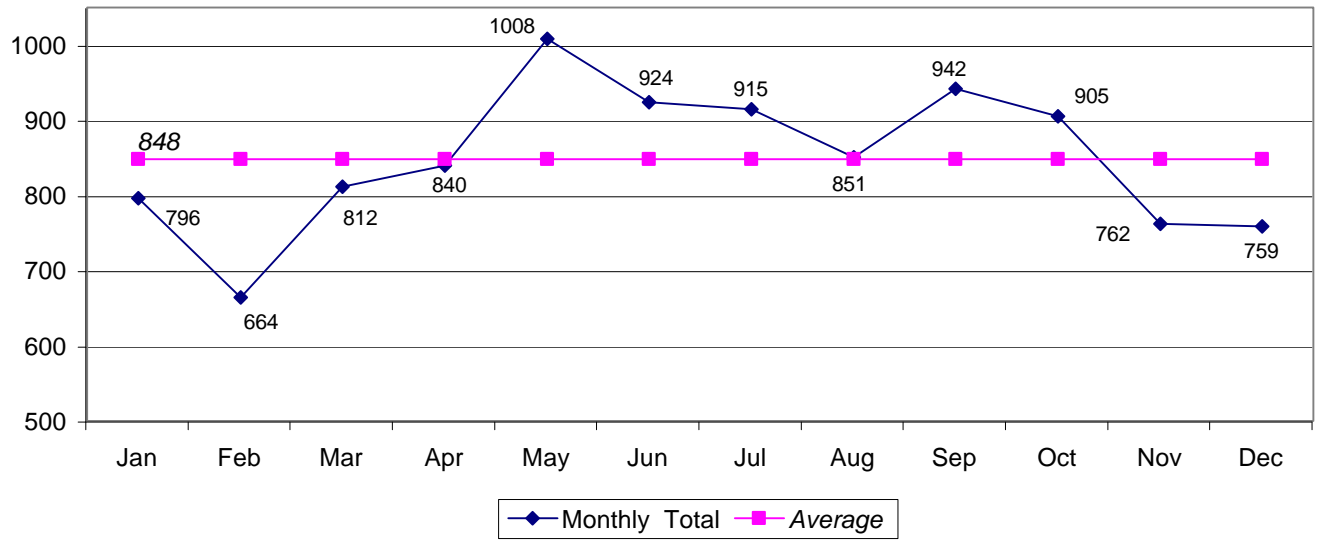
In 2006, Nevada law enforcement cleared 4,137 aggravated assaults (40.65%).

Trends

	Number Reported	% Change from Previous Year	Rate/1,000
2002	7,634	20.47%	3.46
2003	7,528	-1.39%	3.28
2004	8,348	10.89%	3.46
2005	8,727	4.54%	3.46
2006	10,178	16.63%	3.88

*The criminal statistics within this publication are only those criminal statistics reported to the Uniform Crime Reporting Program by the participating law enforcement agencies.

2006 Assault Offenses by Month & Monthly Average



Weapon Types Used

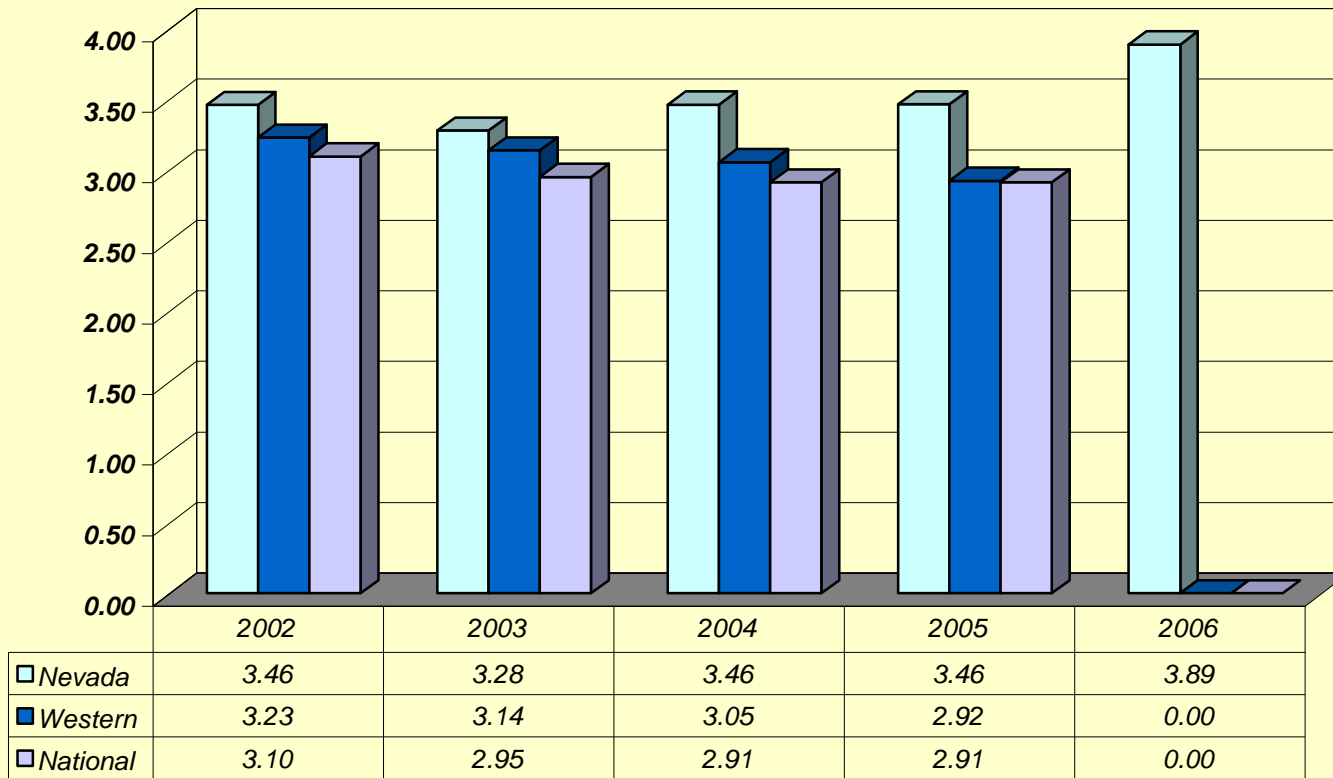
TYPE	2002	2003	2004	2005	2006	5-year Total
Firearm	1,285	1,593	1,652	1,776	2,089	8,395
Knife	1,582	1,665	1,828	1,869	1,864	8,808
Other Weapon	2,954	2,987	3,728	3,684	4,557	17,910
Strong Arm	1,813	1,283	1,140	1,398	1,668	7,302
Total	7,634	7,528	8,348	8,727	10,178	42,415

Profile of Persons Arrested

AGE	2002	2003	2004	2005	2006	5-year Total
17 and Under	271	351	492	291	306	1,711
18-24	488	552	933	693	684	3,350
25-29	307	314	499	414	468	2,002
30-34	282	314	491	316	324	1,727
35-39	274	281	458	280	321	1,614
40 and Over	547	524	999	713	733	3,516
Total	2,169	2,336	3,872	2,707	2,836	13,920
Male	1,724	1,889	3,009	2,219	2,318	11,159
Female	445	447	863	488	518	2,761

*The criminal statistics within this publication are only those criminal statistics reported to the Uniform Crime Reporting Program by the participating law enforcement agencies.

Aggravated Assault Rates Nevada, Western States, National



*The criminal statistics within this publication are only those criminal statistics reported to the Uniform Crime Reporting Program by the participating law enforcement agencies.

Burglary



Clock located in front of Legislature in Carson City, Nevada. A gift to the citizens of the State of Nevada by Nevada Rotary Clubs, February 23, 2005.



BURGLARY

2006

Crime Clock - One Burglary Every 21 Minutes, 11 Seconds

Burglary, also known as breaking and entering, is "...the unlawful entry or attempted forcible entry of any structure to commit a felony or larceny."

Burglary--NRS 205.060: (1) "Every person who, by day or night, enters any house, room, apartment, tenement, shop, warehouse, store, mill, barn, stable, outhouse, or other building, tent, vessel, vehicle, vehicle trailer, semi-trailer or house trailer, airplane, glider, boat or railroad car, with intent to commit grand or petit larceny, assault or battery on any person or any felony, is guilty of burglary."

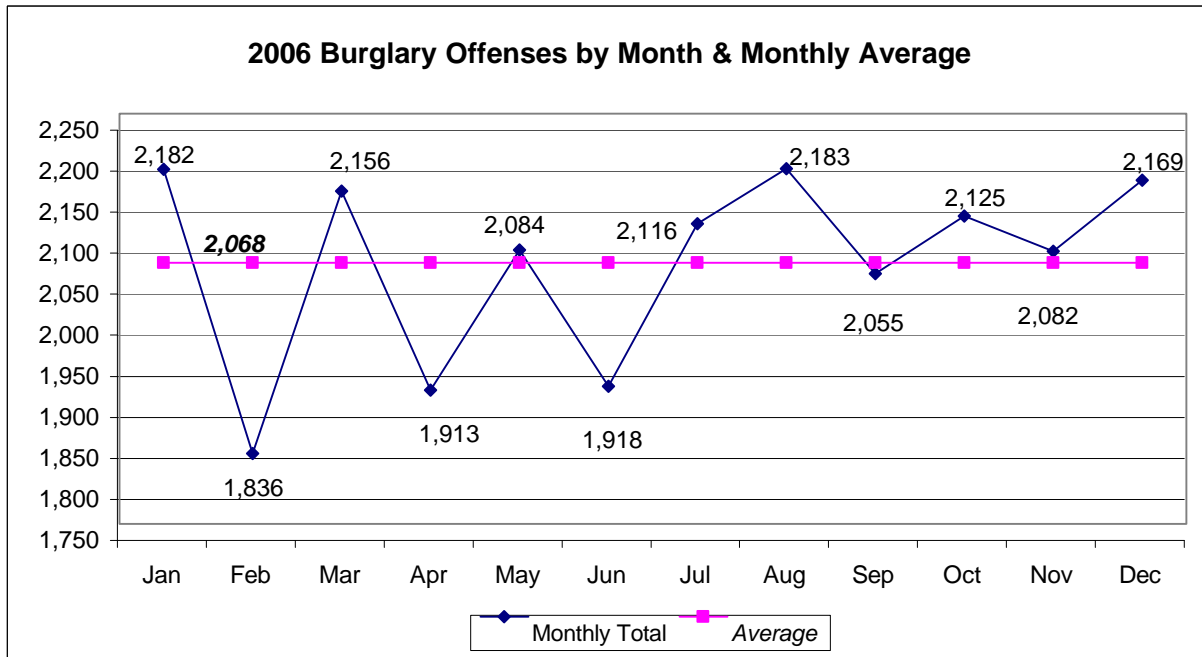
Incidents of burglary occurred most frequently during the months of August (2,183), and June (2,182). Their cumulative number of 4,365 represented 17.59% of the annual total.

Of the 24,819 burglaries reported to law enforcement in Nevada in 2006, 2,286 (9.21%) were cleared.

Nevada's burglary rate per 1,000 population in 2006 was 9.46 . The highest recorded rate for the past ten years was in 1997 at 12.38 per 1,000.

Trends

	Number Reported	% Change from Previous Year	Rate/1,000
2002	18,953	7.0%	8.59
2003	21,962	15.9%	9.56
2004	23,137	5.4%	9.60
2005	23,458	1.4%	9.31
2006	24,819	5.8%	9.46



*The criminal statistics within this publication are only those criminal statistics reported to the Uniform Crime Reporting Program by the participating law enforcement agencies.

Profile of Persons Arrested

AGE	2002	2003	2004	2005	2006	5-year Total
17 and Under	745	847	640	691	641	3,564
18-24	1,307	1,494	1,431	1,356	826	6,414
25-29	645	739	732	789	390	3,295
30-34	598	663	692	595	291	2,839
35-39	589	583	588	573	283	2,616
40 and Over	897	903	880	901	526	4,107
Total	4,781	5,229	4,963	4,905	2,957	22,835
Male	3,718	3,971	3,814	3,712	2,340	17,555
Female	1,063	1,258	1,149	1,193	617	5,280

Type of Entry

TYPE	2002	2003	2004	2005	2006	5-year Total
Forcible Entry	10,956	12,788	12,979	13,807	15,571	66,101
Unlawful Entry-No Force	7,113	8,369	9,031	8,586	7,662	40,761
Attempted Forcible Entry	884	805	1,127	1,065	1,586	5,467
Total	18,953	21,962	23,137	23,458	24,819	112,329

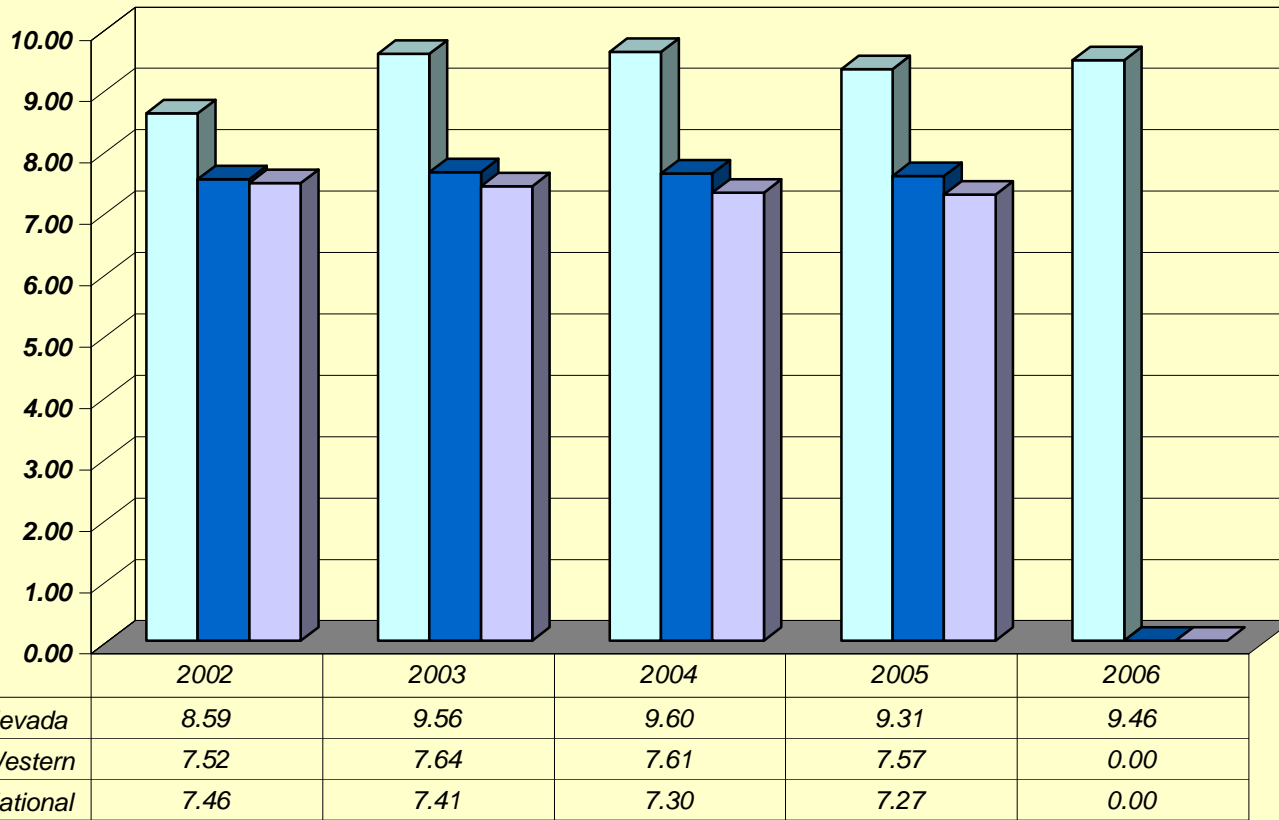
*The criminal statistics within this publication are only those criminal statistics reported to the Uniform Crime Reporting Program by the participating law enforcement agencies.

Burglary Offenses and Value by Time of Day

Residence	2002		2003		2004		2005		2006	
6 pm - 6 am	1,897	\$4,457,284	1,986	\$5,728,326	2,185	\$4,709,862	2,276	\$6,752,672	2,451	\$6,389,659
6 am - 6 pm	3,517	\$8,318,096	3,597	\$11,010,861	3,968	\$11,022,087	4,299	\$12,317,730	5,104	\$17,925,845
Unknown	7,529	\$16,729,882	8,672	\$28,448,332	8,534	\$28,055,970	8,753	\$22,776,357	9,405	\$26,528,145
Subtotal	12,943	\$29,505,263	14,255	\$45,187,518	14,687	\$43,787,919	15,328	\$41,846,759	16,960	\$50,843,650
Non Residence										
6 pm - 6 am	1,347	\$3,518,336	1,660	\$3,439,465	1,842	\$2,742,999	1,903	\$3,371,640	1,837	\$5,400,344
6 am - 6 pm	654	\$713,130	919	\$1,069,930	967	\$2,063,664	959	\$2,204,817	1,089	\$2,684,218
Unknown	4,009	\$10,171,308	5,128	\$21,046,282	5,641	\$22,012,742	5,263	\$15,183,349	4,933	\$16,320,881
Subtotal	6,010	\$14,402,774	7,707	\$25,555,677	8,450	\$26,819,405	8,125	\$20,759,806	7,859	\$24,405,443
Grand Total	18,953	\$43,908,037	21,962	\$70,743,195	23,137	\$70,607,324	23,453	\$62,606,565	24,819	\$75,249,092

*The criminal statistics within this publication are only those criminal statistics reported to the Uniform Crime Reporting Program by the participating law enforcement agencies.

Burglary Rates Nevada, Western States, National



*The criminal statistics within this publication are only those criminal statistics reported to the Uniform Crime Reporting Program by the participating law enforcement agencies.

Larceny – Theft



Pioneer Family Statue, erected 1939, located on Center Street at the Pioneer Theater Auditorium, Reno, Nevada.



LARCENY-THEFT

2006

Crime Clock - One Larceny Every 10 Minutes, 28 Seconds

Larceny is the unlawful taking of the property of another with the intent to deprive him of ownership.

Theft--NRS 205.0832: "A person commits theft if, without lawful authority, he knowingly:

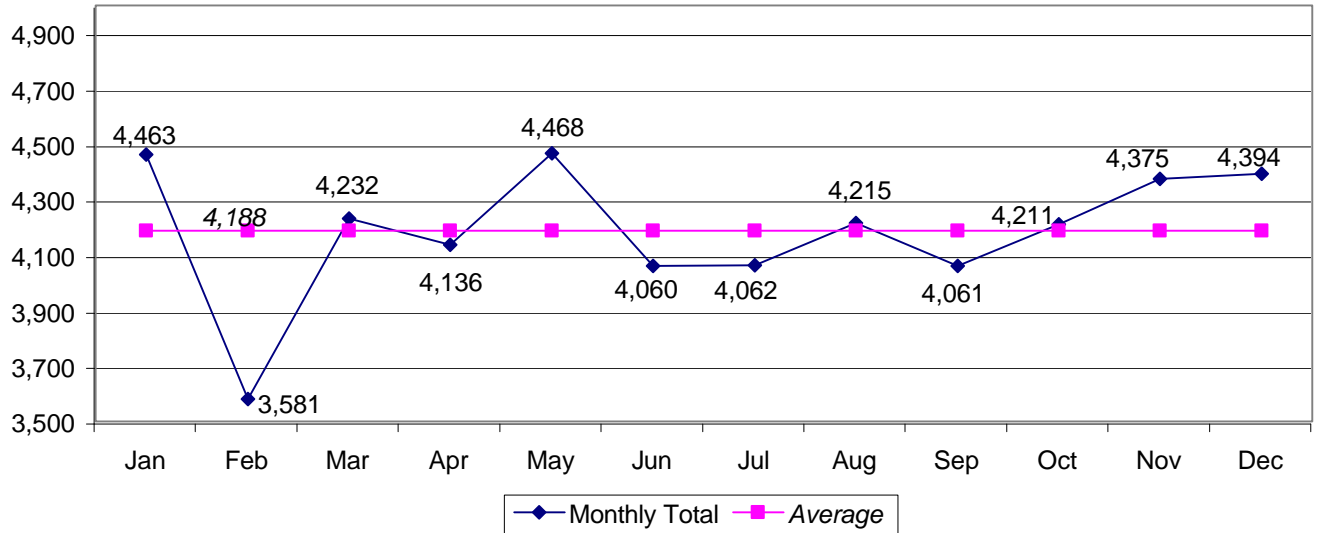
- (1) Controls any property of another person with the intent to deprive that person of the property.
- (2) Converts, makes an unauthorized transfer of an interest in, or without authorization controls any property of another person, or uses the services or property of another person entrusted to him or placed in his possession for a limited, authorized period of determined or prescribed duration or for a limited use.
- (3) Obtains real or personal property or the services of another person by a material misrepresentation with intent to deprive that person of the property or services. As used in this subsection, "material misrepresentation" means the use of any pretense, or the making of any promise, representation or statement of present, past or future fact which is fraudulent and which, when used or made, is instrumental in causing the wrongful control or transfer of property or services. The pretense may be verbal or it may be a physical
- (4) Comes into control of lost, mislaid or misdelivered property of another person under circumstances providing means of inquiry as to the true owner and appropriates that property to his own use or that of another person without reasonable efforts to notify the true owner.
- (5) Controls property of another person knowing or having reason to know that the property was stolen.
- (6) Obtains services which he knows are available only for compensation without paying or agreeing to pay compensation or diverts the services of another person to his own benefit or that of another person without lawful authority to do so.
- (7) Takes, destroys, conceals or disposes of property in which another person has a security interest, with intent to defraud that person.
- (8) Commits any act that is declared to be theft by a specific statute.
- (9) Draws or passes a check, and in exchange obtains property or services, if he knows that the check will not be paid when presented."

Trends

	Number Reported	% Change from Previous Year	Rate/1,000
2002	47,461	5.3%	21.51
2003	53,325	12.4%	23.22
2004	52,437	-1.7%	21.75
2005	51,983	-0.9%	19.82
2006	50,258	-3.3%	19.16

*The criminal statistics within this publication are only those criminal statistics reported to the Uniform Crime Reporting Program by the participating law enforcement agencies.

2006 Larceny Offenses by Month & Monthly Average



Profile of Persons Arrested

AGE	2002	2003	2004	2005	2006	5-year Total
17 and Under	3,480	3,177	3,514	2,887	2,422	15,480
18-24	2,482	2,666	2,711	2,706	2,245	12,810
25-29	1,136	1,094	1,194	1,241	1,156	5,821
30-34	1,204	1,191	1,176	1,012	919	5,502
35-39	1,223	1,187	1,178	1,148	959	5,695
40 and Over	2,595	2,836	2,800	2,823	2,359	13,413
Total	12,120	12,151	12,573	11,817	10,060	58,721
Male	8,024	8,068	8,110	7,556	6,688	38,446
Female	4,096	4,083	4,463	4,261	3,372	20,275

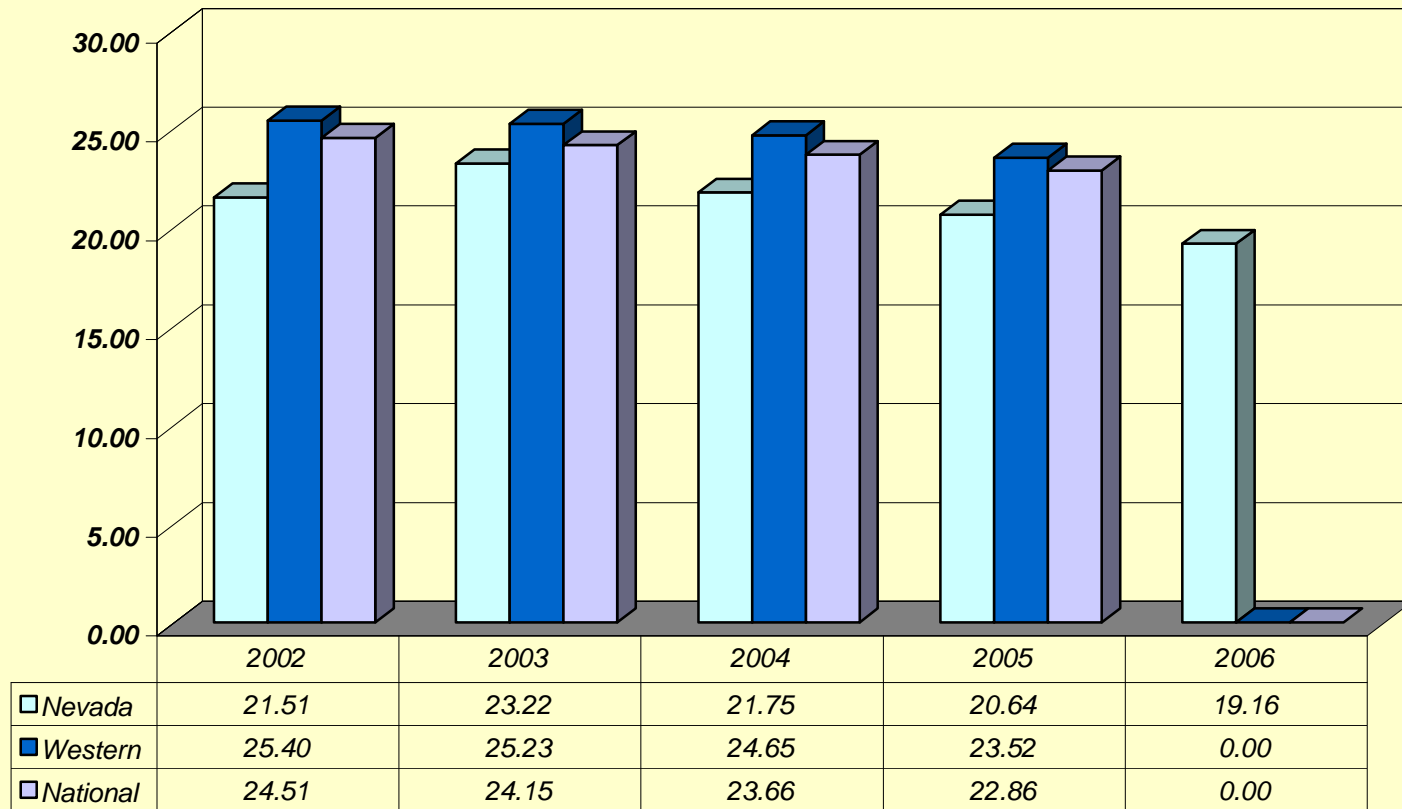
*The criminal statistics within this publication are only those criminal statistics reported to the Uniform Crime Reporting Program by the participating law enforcement agencies.

Larceny Offenses and Value by Classification

	2002		2003		2004		2005		2006	
Pocket-Picking	313	\$162,271	311	\$250,520	350	\$213,432	307	\$136,893	392	\$179,239
Purse-Snatching	599	\$308,630	553	\$1,017,290	600	\$492,965	484	\$308,403	507	\$224,459
Shoplifting	4,578	\$1,039,392	4,366	\$1,090,449	4,419	\$1,133,234	4,890	\$724,369	3,959	\$1,682,006
From Motor Vehicles	11,260	\$7,692,116	11,309	\$9,323,693	10,728	\$9,268,837	10,876	\$8,723,616	11,837	\$10,297,367
MV Parts & Accessories	5,703	\$6,871,223	6,241	\$8,946,038	6,863	\$10,671,526	6,970	\$11,190,173	7,168	\$12,173,396
Bicycles	1,562	\$647,079	1,011	\$311,009	741	\$243,849	773	\$334,694	675	\$309,860
From Buildings	16,187	\$16,726,269	20,104	\$27,115,019	21,453	\$25,869,714	20,385	\$30,649,977	18,536	\$30,688,914
From Coin-Op Machines	248	\$138,299	192	\$250,289	229	\$264,810	168	\$41,703	172	\$85,793
All Other	7,011	\$12,189,844	9,238	\$18,366,124	6,988	\$13,437,961	7,130	\$38,591,787	7,012	\$19,337,671
Total	47,461	\$45,775,124	53,325	\$66,670,432	52,371	\$61,596,328	51,983	\$90,701,615	50,258	\$74,978,704

*The criminal statistics within this publication are only those criminal statistics reported to the Uniform Crime Reporting Program by the participating law enforcement agencies.

Larceny Rates Nevada, Western States, National



*The criminal statistics within this publication are only those criminal statistics reported to the Uniform Crime Reporting Program by the participating law enforcement agencies.

Motor Vehicle Theft



A Tribute to all Veterans. A sandstone relief wall honoring Nevada Veteran's, located between the Capitol and the State Library and Archives Building, Carson City, Nevada.



MOTOR VEHICLE THEFT

2006

Crime Clock 1 Motor Vehicle Theft Every 19 Minutes, 29 Seconds

Uniform Crime Reporting defines motor vehicle theft as the larceny or attempted larceny of a motor vehicle, including "joy riding." Excluded from this class is a reported offense where there is lawful access to the vehicle, such as a family situation or unauthorized use by others with lawful access, such as with employees.

Motor vehicles are defined by UCR as self-propelled vehicles that run on the surface of the land and not on rails, such as automobiles, trucks, buses, motorcycles, motor scooters, snowmobiles, ATV's, etc. Not included are farm equipment, construction equipment, airplanes, motorboats.

Motor Vehicle Theft--NRS 205.2715: "(1) Every person who takes and carries away or drives away the vehicle of another without the intent to permanently deprive the owner thereof but without the consent of the owner of such vehicles is guilty of a gross misdemeanor. (2) Every person who is in possession of a vehicle without the consent of the owner of such vehicle may reasonably be inferred to have taken and carried away or driven away the vehicle."

Motor vehicle thefts occurred most frequently during the months of January (2,639) and March (2,580). These months collectively accounted for 19.36% (5,219) of 2006's total motor vehicle theft offenses.

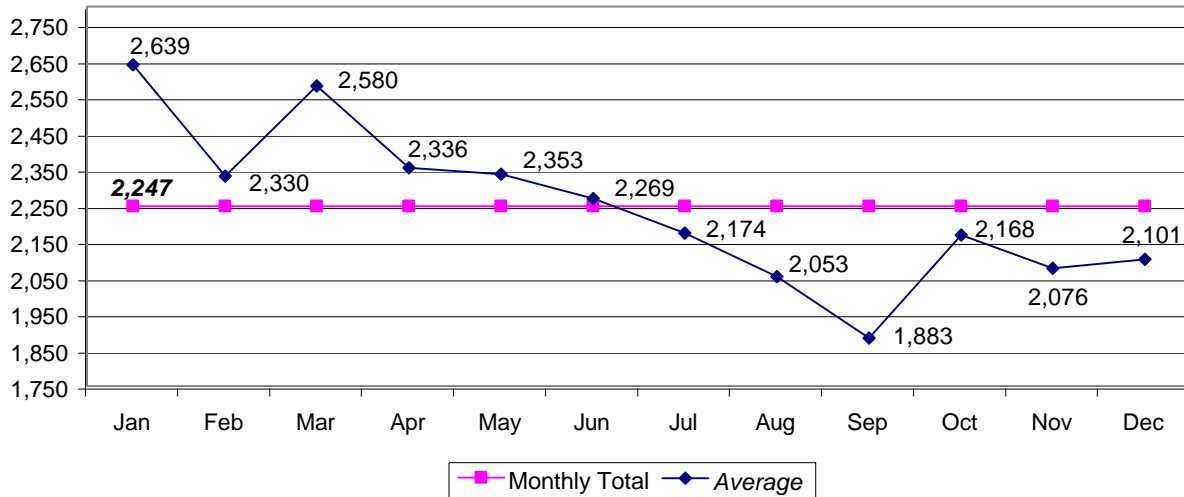
Law enforcement cleared 2,571 (9.54%) of all motor vehicle thefts in Nevada in 2006.

Trends

	Number Reported	% Change from Previous Year	Rate/1,000
2002	17,485	18.9%	7.93
2003	20,849	19.2%	9.08
2004	22,636	8.6%	9.39
2005	26,934	19.0%	10.69
2006	26,962	0.1%	10.28

*The criminal statistics within this publication are only those criminal statistics reported to the Uniform Crime Reporting Program by the participating law enforcement agencies.

2006 Motor Vehicle Theft Offenses by Month & Monthly Average



Profile of Persons Arrested

AGE	2002	2003	2004	2005	2006	5-year Total
17 and Under	528	455	314	270	193	1,760
18-24	687	714	772	722	702	3,597
25-29	241	295	309	367	407	1,619
30-34	219	247	239	264	269	1,238
35-39	170	187	198	203	212	970
40 and Over	224	192	213	236	302	1,167
Total	2,069	2,090	2,045	2,062	2,085	10,351
Male	1,719	1,730	1,698	1,684	1,711	8,542
Female	350	360	347	378	378	1,813

*The criminal statistics within this publication are only those criminal statistics reported to the Uniform Crime Reporting Program by the participating law enforcement agencies.

Type of Vehicle

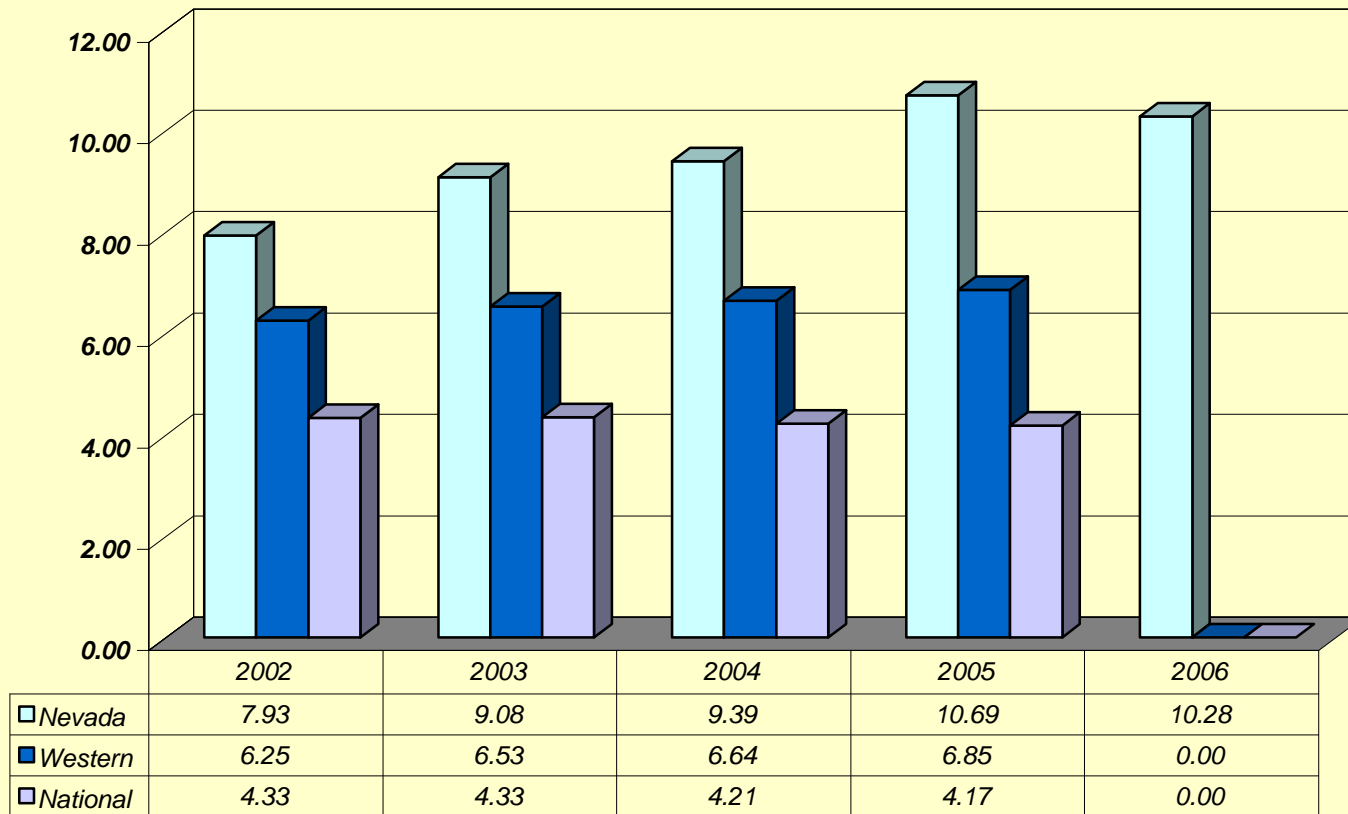
	2002	2003	2004	2005	2006	5-year Total
Automobile	12,075	15,106	15,439	18,382	17,783	78,785
Truck/Bus	4,501	4,597	5,764	6,882	7,298	29,042
Other Vehicle	911	1,146	1,434	1,669	1,862	7,022
Grand Total	17,485	20,849	22,636	26,934	26,962	114,866

Locally Stolen Motor Vehicles Recovered

	2002	2003	2004	2005	2006	5-year Total
Stolen and Recovered Locally	13,615	16,467	18,327	23,546	24,773	96,728
Stolen Locally - Recovered by Other Jurisdiction	3,252	3,566	3,702	4,068	4,394	18,982
Total	16,867	20,033	22,033	27,614	29,167	115,714
Stolen in Other Jurisdiction - Recovered Locally	2,459	2,458	3,180	3,729	3,833	15,659

*The criminal statistics within this publication are only those criminal statistics reported to the Uniform Crime Reporting Program by the participating law enforcement agencies.

Motor Vehicle Thefts Nevada, Western States, National



*The criminal statistics within this publication are only those criminal statistics reported to the Uniform Crime Reporting Program by the participating law enforcement agencies.

ARSON

2006

Crime Clock - One Arson Every 10 Hours, 56 Minutes

Arson was the eighth and latest index offense to be added to the UCR Program by congressional mandate in 1979. Since only 8,528 agencies covering 65.2% of the United State's population submitted reports for all 12 months of that year, data users should be aware that the figures do not represent the Nation's total arson experience. Caution is recommended when viewing arson trend information. Figures may have been influenced by improved arson reporting procedures. It is expected that year-to-year statistical comparability will improve as collection continues.

Nationally, 67,504 arsons were reported in 2005. The national overall rate of arson per 100,000 population was 26.9. Nationally, the average dollar loss for property damage or destroyed in reported arsons was \$14,910 per incident. There were 801 arsons reported in Nevada in 2006, compared to 777 in 2005. Nevada's arson rate per 1,000 population has generally decreased since the 1995 rate of 47.

Arson--NRS 205.005: "Any person shall be deemed to have set fire to a building, structure or any property mentioned in NRS 205.010 to 205.030, inclusive, whenever any part thereof or anything therein shall be scorched, charred or burned."

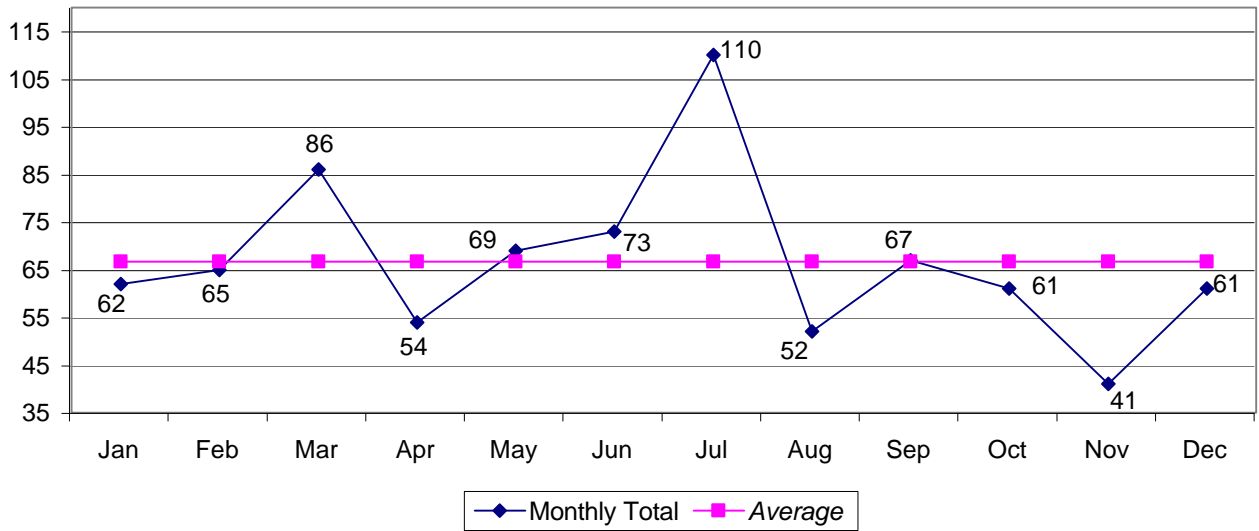
In 2006, arson offenses in Nevada occurred most frequently during the months of March (86), and July (110). These months represented 24.47% of the year's total. Law enforcement cleared 164 (20.47%) of reported arson offenses in 2006.

Trends

	Number Reported	% Change from Previous Year	Rate/1,000
2002	630	17.5%	0.29
2003	573	-9.0%	0.25
2004	692	20.8%	0.29
2005	777	12.3%	0.31
2006	801	3.1%	0.31

*The criminal statistics within this publication are only those criminal statistics reported to the Uniform Crime Reporting Program by the participating law enforcement agencies.

2006 Arson Offenses by Month & Monthly Average



Profile of Persons Arrested

AGE	2002	2003	2004	2005	2006	5-year Total
17 and Under	91	72	117	93	107	480
18-24	18	13	24	16	18	89
25-29	5	5	8	2	5	25
30-34	2	5	5	6	7	25
35-39	8	6	5	4	9	32
40 and Over	17	6	10	26	11	70
Total	141	107	169	147	157	721
Male	123	85	136	114	125	583
Female	18	22	33	33	32	138

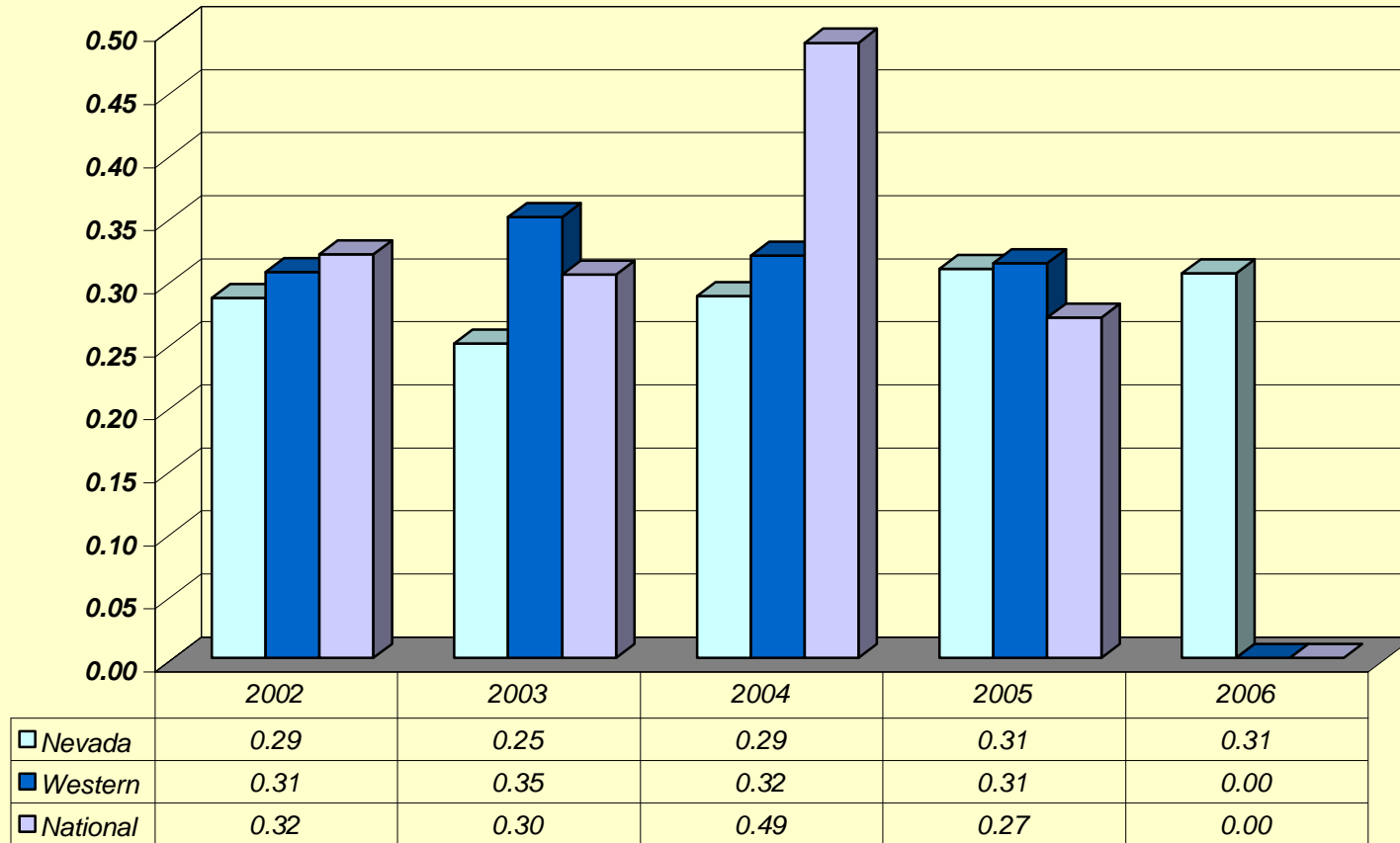
*The criminal statistics within this publication are only those criminal statistics reported to the Uniform Crime Reporting Program by the participating law enforcement agencies.

Arson Offenses by Property Type and Estimated Value

Structural	2002		2003		2004		2005		2006	
	# of	Value of	# of	Value of	# of	Value of	# of	Value of	# of	Value of
	offenses	loss	offenses	loss	offenses	loss	offenses	loss	offenses	loss
Residential	148	\$1,867,500	103	\$2,276,976	105	\$1,618,976	149	\$1,570,765	144	\$4,455,873
Non-Residential	89	\$4,498,790	82	\$17,862,508	109	\$1,001,391	117	\$16,490,522	136	\$4,931,999
Mobile										
Cars, Trailers, Boats, etc...	272	\$1,585,961	266	\$2,004,060	348	\$2,535,206	389	\$2,807,765	368	\$2,891,488
All Other										
Crops, Fields, Signs, etc...	121	\$27,389	122	\$133,043	130	\$307,275	122	\$37,471	153	\$459,560
Total	630	\$7,979,640	573	\$22,276,587	692	\$5,462,848	777	\$20,906,523	801	\$12,738,920

*The criminal statistics within this publication are only those criminal statistics reported to the Uniform Crime Reporting Program by the participating law enforcement agencies.

Arson Rates - Nevada, Western States, National



*The criminal statistics within this publication are only those criminal statistics reported to the Uniform Crime Reporting Program by the participating law enforcement agencies.

** Western States information not available

Clearance Rates



Nevada Vietnam Memorial located at Mills Park, Carson City, Nevada. Dedicated to all Vietnam Veterans on November 11, 2002 by Incarcerated Vietnam Veterans of America #388, Carson Area Chapter.



CLEARANCE RATES

2006

For Uniform Crime Reporting purposes, a crime index offense is cleared when a law enforcement agency has identified the offender, there is enough evidence to charge him and he is actually taken into custody. The arrest of one person can clear several crimes, or several persons may be arrested in the process of clearing one crime.

Crime solutions are also recorded in exceptional circumstances when some elements beyond law enforcement control preclude formal charges against the offender. An offense may be exceptionally cleared when it falls into one of the following categories:

1. The offender commits suicide.
2. A double murder occurs (two persons kill each other).
3. The offender dies after making a confession (dying declaration).
4. The offender is killed by law enforcement officers.
5. The offender confesses to committing a crime while already in custody for another crime or serving a sentence for another crime.
6. The offender is prosecuted in another city for a different crime or the same crime by federal, state or local authorities, and the other jurisdiction refuses to release the order.
7. Another jurisdiction refuses to extradite the offender.
8. The victim of a crime refuses to cooperate in the prosecution.
9. The offender is prosecuted for a less serious charge than the one for which he was arrested.
10. The offender is a juvenile who is handled by a verbal or written notice to the parents in instances involving minor offenses such as petit or simple larceny.

During 2006, 16.7% of reported index crimes in Nevada were cleared, either by arrest or exceptional means. The percentage of violent crimes cleared in Nevada in 2006 was 31.51% compared to the national 2005 figure of 45.5%, while property crime clearances were 14.03% compared to the national 2005 level of 16.3% (arson (17.7%) is included separately in the national clearance percentage).

Clearance Rates for Index Offenses, 2002-2006

Offenses	2002		2003		2004		2005		2006	
	Offenses	Clearances	Offenses	Clearances	Offenses	Clearances	Offenses	Clearances	Offenses	Clearances
Murder	184	104	197	99	180	120	210	151	229	155
Rape	930	329	871	273	954	227	1,015	260	1,079	271
Robbery	5,119	1,034	5,215	1,030	4,905	888	4,709	853	7,027	1,270
Assault	7,634	3,710	7,528	2,878	8,348	3,043	8,727	3,543	10,178	4,137
Burglary	18,953	4,487	21,962	4,893	23,137	4,759	23,458	4,738	24,819	2,286
Larceny	47,461	11,790	53,325	8,581	52,437	12,391	51,983	11,457	50,258	9,405
MV Theft	17,485	2,533	20,849	2,517	22,636	2,711	26,934	2,877	26,962	2,571
Arson	630	99	573	75	692	80	777	118	801	164
Total	98,396	24,086	110,520	20,346	113,289	24,219	117,813	23,997	121,353	20,259

Note: Offenses cleared do not necessarily relate to the actual offenses which occurred during the calendar year period. Offenses can be cleared from prior periods.

*The criminal statistics within this publication are only those criminal statistics reported to the Uniform Crime Reporting Program by the participating law enforcement agencies.

Arrest Data



Tribute to Union Soldiers and Sailors, Lone Mountain Cemetery, Carson City, Nevada.
One of only two works made in Nevada in the 19th century. Erected March 19, 1891.



ARREST DATA

2006

Primarily a gauge of law enforcement's response to crime, arrest counts also provide definitive data concerning the age, sex and race of perpetrators. Arrest practices, policies and enforcement emphases vary from place to place and even within a community from time to time. While the practices for certain unlawful conduct such as drunkenness, disorderly conduct, vagrancy and related violations may differ among agencies, those for robbery, burglary and other serious crime arrests are more likely to be uniform and consistent throughout all jurisdictions. The UCR Program procedures require that an arrest be counted on each separate occasion a person is taken into custody, notified or cited. Annual arrest figures do not measure the number of individuals arrested since one person may be arrested several times during the year for the same or different offenses. For UCR purposes, a juvenile is counted as "arrested" when the circumstances are such that if he or she were an adult an arrest would result, but in fact, there may not have been a formal charge.

Nationwide, law enforcement agencies made an estimated 14 million arrests in 2005 (the latest figures available) for all criminal infractions except traffic violations. When the overall arrest volume was related to the total United States population, the rate was 47.61 arrests per 1000 inhabitants. In Nevada, enforcement reports to UCR in 2006 indicated a total arrest figure of 163,067. The arrest rate per 1,000 in population for the state was 67.17.

During 2006:

*Note: Nevada DPS Investigation Division arrest totals are not included.

See Drug/Liquor Arrest section.

-- 12.86% of all arrests were juveniles, 87.14% were adults

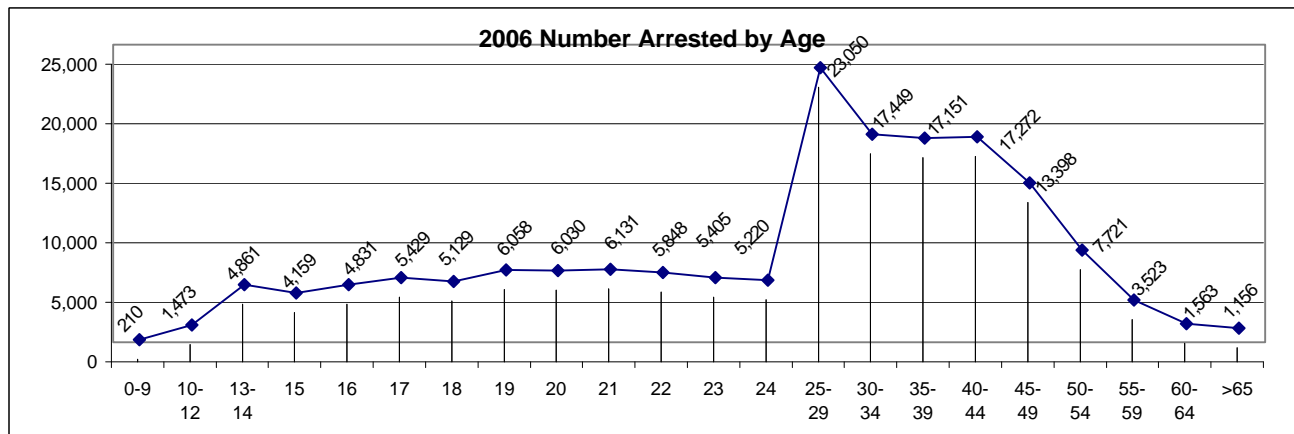
-- Index Offenses accounted for 29.43% of juvenile arrests

-- For Adults, 23.35% of arrests were for index offenses

-- 40.57% of adult arrests were between the ages of 25 and 40.

Number of Persons Arrested by Age Category* 2003-2006

	Number of Persons Arrested				Percent Distribution			
	2003	2004	2005	2006	2003	2004	2005	2006
Juveniles								
0-9	236	172	211	210	0.2	0.1	0.1	0.1
10-12	1,796	1,552	1,365	1,473	1.2	1.0	0.8	0.9
13-14	5,567	5,180	4,709	4,861	3.6	3.3	2.9	3.0
15	4,249	4,176	3,952	4,159	2.8	2.7	2.4	2.6
16	4,790	4,852	4,473	4,831	3.1	3.1	2.7	3.0
17	6,030	5,876	5,401	5,429	3.9	3.8	3.3	3.3
Total Juveniles	22,668	21,808	20,111	20,963	14.8	14.0	13.0	12.9
Adults								
18	4,435	4,665	4,795	5,129	2.9	3.0	2.9	3.1
19	5,583	5,802	6,059	6,058	3.7	3.7	3.7	3.7
20	5,660	5,572	5,549	6,030	3.7	3.6	3.4	3.7
21	5,200	5,546	5,557	6,131	3.4	3.6	3.4	3.8
22	5,098	5,358	5,322	5,848	3.3	3.6	3.3	3.6
23	5,197	5,258	5,083	5,405	3.4	3.4	3.1	3.3
24	4,828	5,057	4,792	5,220	3.2	3.2	2.9	3.2
25-29	19,151	19,663	21,211	23,050	12.5	12.6	13.0	14.1
30-34	17,767	17,862	16,630	17,449	11.6	11.4	10.2	10.7
35-39	18,254	17,809	17,277	17,151	11.9	11.4	10.6	10.5
40-44	16,470	17,429	17,269	17,272	10.8	11.2	10.6	10.6
45-49	11,728	12,118	12,897	13,398	7.7	7.8	7.9	8.2
50-54	5,709	6,374	6,846	7,721	3.7	4.1	4.2	4.7
55-59	2,832	3,162	3,311	3,523	1.9	2.0	2.0	2.2
60-64	1,367	1,506	1,468	1,563	0.9	1.0	0.9	1.0
>65	973	1,087	1,033	1,156	0.6	0.7	0.6	0.7
Total Adults	130,252	134,268	135,099	142,104	85.2	86.3	87.0	87.1
Grand Totals	152,920	156,076	155,210	163,067	100	100	100	100



*Note: NDI Drug arrest totals are not included. See Drug/Liquor Arrest section.

Statewide Arrests by Offense and Age

OFFENSE	SEX	9 &										
		Under	10-12	13-14	15	16	17	Total <18	18	19	20	21
Murder	M	0	0	0	3	2	4	9	13	9	2	6
	F	0	0	0	0	0	0	0	1	1	0	2
Manslaughter by Negligence	M	0	0	0	1	0	0	1	0	0	2	0
	F	0	0	0	0	0	0	0	0	0	0	0
Forcible Rape	M	0	2	5	3	5	10	25	9	12	3	6
	F	0	0	0	0	0	1	1	0	0	0	0
Robbery	M	0	8	37	37	63	91	236	125	107	80	75
	F	0	0	5	0	5	6	16	8	19	18	11
Aggravated Assault	M	5	23	56	38	64	65	251	83	93	82	83
	F	0	9	13	16	11	6	55	13	16	16	13
Other Assaults	M	41	230	372	260	265	250	1,418	318	415	396	487
	F	10	68	255	167	163	132	795	125	142	175	231
Burglary	M	9	48	148	98	104	139	546	142	119	91	84
	F	2	3	35	16	21	18	95	26	23	23	21
Larceny--Theft	M	15	128	354	315	279	385	1,476	264	244	213	228
	F	7	77	247	192	202	221	946	117	137	106	105
Motor Vehicle Theft	M	2	3	32	31	41	51	160	106	105	74	84
	F	0	0	8	6	11	8	33	22	20	14	20
Arson	M	5	27	35	6	8	8	89	5	2	0	1
	F	2	3	8	3	1	1	18	6	0	0	0
Forgery & Counterfeiting	M	0	0	1	4	2	1	8	10	12	20	19
	F	0	0	0	0	1	4	5	7	5	14	13
Fraud	M	0	1	10	6	10	19	46	29	44	52	56
	F	0	1	6	6	7	15	35	16	24	29	24
Embezzlement	M	0	0	1	1	1	17	20	13	13	17	9
	F	0	1	0	0	5	8	14	13	14	15	9
Stolen Property-Buy, Possess, Recei	M	0	10	43	34	41	54	182	86	63	84	68
	F	0	3	12	10	11	14	50	9	11	18	12
Vandalism	M	14	123	288	188	179	138	930	120	77	53	46
	F	3	41	37	18	12	19	130	7	10	14	8
Weapons-carrying, possession, etc.	M	10	54	123	65	114	107	473	157	148	110	121
	F	0	5	13	8	8	6	40	6	13	6	3
Prostitution & Commercialized Vice	M	0	0	0	4	0	9	13	10	24	23	22
	F	0	1	3	3	8	21	36	244	307	316	323
Other Sex Offenses	M	2	21	53	11	19	15	121	30	34	24	32
	F	1	1	1	2	0	1	6	2	1	1	3
Drug Abuse Violations	M	2	32	246	223	287	383	1,173	481	583	545	515
	F	0	11	77	62	74	57	281	104	99	101	93
Gambling	M	0	0	0	1	2	8	11	9	14	13	4
	F	0	0	0	1	3	3	7	11	23	24	11
Offenses Against Family & Children	M	0	10	6	6	15	11	48	85	76	51	50
	F	0	1	10	8	8	6	33	24	20	21	20
Driving Under the Influence	M	2	0	0	2	14	52	70	144	228	245	402
	F	0	0	1	1	9	9	20	43	47	55	97
Liquor Laws	M	2	8	107	190	319	544	1,170	554	571	500	176
	F	3	2	82	102	157	197	543	162	142	123	38
Drunkenness	M	1	0	5	16	27	16	65	5	9	7	2
	F	0	1	9	9	7	14	40	0	0	3	2
Disorderly Conduct	M	11	59	198	102	115	71	556	47	42	51	88
	F	0	39	125	57	50	31	302	8	15	7	12
Vagrancy	M	0	2	7	3	3	2	17	23	20	21	18
	F	0	0	0	2	1	1	4	0	8	6	8
All Other Offenses (except Traffic)	M	42	189	555	532	556	611	2,485	962	1,386	1,520	1,613
	F	5	39	230	200	242	195	911	325	511	646	756
Suspicion	M	0	0	3	7	4	5	19	0	0	0	1
	F	0	0	1	1	1	0	3	0	0	0	0
Curfew and Loitering Law Violations	M	4	68	332	418	558	808	2,188				
	F	6	56	262	278	326	272	1,200				
Runaway	M	1	36	133	175	191	118	654				
	F	3	29	271	211	199	171	884				
GRAND TOTAL		210	1,473	4,861	4,159	4,831	5,429	20,963	5,129	6,058	6,030	6,131

*The criminal statistics within this publication are only those criminal statistics reported to the Uniform Crime Reporting Program by the participating law enforcement agencies.

Statewide Arrests by Offense and Age

	22	23	24	25-29	30-34	35-39	40-44	45-49	50-54	55-59	60-64	over 64	Total >18	Grand Total
8	5	6	29	17	7	11	6	4	3	1	6	133	142	
2	1	1	2	3	1	2	2	2	0	0	1	21	21	
0	0	0	3	1	0	1	0	0	2	0	0	9	10	
0	0	0	0	0	0	0	0	0	0	0	0	0	0	
2	6	4	31	23	27	25	7	10	4	5	3	177	202	
0	0	0	0	0	2	0	0	0	0	0	0	2	3	
45	64	55	225	134	122	87	48	34	14	2	2	1,219	1,455	
8	7	9	43	21	17	7	6	3	1	1	0	179	195	
83	80	80	381	265	251	238	160	97	47	22	22	2,067	2,318	
15	12	15	87	59	70	72	33	21	12	3	6	463	518	
499	487	478	2,268	1,866	1,739	1,461	1,105	612	305	132	125	12,693	14,111	
195	176	187	754	609	520	524	374	169	79	29	31	4,320	5,115	
92	72	65	294	221	204	206	137	42	18	5	2	1,794	2,340	
25	19	24	96	70	79	61	35	13	4	2	1	522	617	
194	179	166	756	597	659	690	499	288	129	63	43	5,212	6,688	
100	98	94	400	322	300	260	197	100	44	30	16	2,426	3,372	
79	68	53	318	227	181	134	72	22	17	3	8	1,551	1,711	
20	20	17	89	42	31	31	11	3	0	0	1	341	374	
2	1	0	4	5	9	2	4	1	0	0	0	36	125	
1	0	0	1	2	0	2	2	0	0	0	0	14	32	
21	25	24	106	98	96	81	43	35	11	5	2	608	616	
23	15	18	72	60	64	41	38	8	2	2	1	383	388	
63	56	54	278	268	265	222	193	119	52	36	27	1,814	1,860	
29	40	37	160	134	122	125	77	48	18	18	5	906	941	
10	10	4	33	25	28	21	13	8	5	2	1	212	232	
11	8	3	33	22	28	17	13	9	4	2	0	201	215	
54	47	58	248	176	167	146	90	39	13	10	4	1,353	1,535	
13	15	7	69	43	41	27	17	7	4	1	0	294	344	
54	44	49	148	100	90	90	71	37	15	7	5	1,006	1,936	
6	2	2	29	24	20	27	17	9	4	2	3	184	314	
79	90	99	317	212	177	119	84	49	28	7	12	1,809	2,282	
6	9	7	20	17	22	16	9	5	4	0	1	144	184	
47	33	34	170	123	105	117	71	51	29	8	11	878	891	
327	265	187	630	325	244	249	175	59	22	5	4	3,682	3,718	
24	32	41	139	126	119	140	132	78	58	31	29	1,069	1,190	
5	6	6	21	18	8	16	17	7	4	0	0	115	121	
490	433	427	1,904	1,288	1,128	1,024	703	361	150	40	29	10,101	11,274	
106	102	99	427	325	291	289	201	76	17	5	1	2,336	2,617	
0	0	0	0	0	1	4	3	2	0	0	0	50	61	
0	0	0	0	1	1	0	1	0	0	0	0	72	79	
41	37	39	172	116	130	131	101	47	22	13	7	1,118	1,166	
27	28	22	134	98	93	71	37	24	13	4	0	636	669	
372	393	361	1,538	1,186	991	958	781	590	290	194	142	8,815	8,885	
93	82	82	331	252	280	278	225	185	72	33	30	2,185	2,205	
168	120	118	444	375	478	680	638	487	222	131	75	5,737	6,907	
35	11	22	82	55	74	123	72	59	23	10	10	1,041	1,584	
2	1	3	8	5	7	9	7	5	1	2	2	75	140	
1	1	0	0	1	2	1	6	0	0	0	0	17	57	
78	78	87	291	192	196	211	231	126	64	29	15	1,826	2,382	
16	10	18	52	25	36	43	43	24	12	7	2	330	632	
26	22	35	126	120	157	200	296	206	105	42	35	1,452	1,469	
6	11	9	42	37	34	35	39	49	11	5	4	304	308	
1,582	1,381	1,358	6,689	5,440	5,585	6,156	5,035	2,972	1,374	548	395	43,996	46,481	
663	703	656	2,556	1,678	1,852	1,791	1,221	519	195	66	37	14,175	15,086	
0	0	0	0	0	0	0	0	0	0	0	0	1	20	
0	0	0	0	0	0	0	0	0	0	0	0	0	3	
												0	2,188	
												0	1,200	
												0	654	
												0	884	
5,848	5,405	5,220	23,050	17,449	17,151	17,272	13,398	7,721	3,523	1,563	1,156	142,104	163,067	

Boulder City PD Arrests By Offense and Age

OFFENSE	SEX	9 & Under												
		10-12	13-14	15	16	17	Total <18	18	19	20	21			
Murder	M	0	0	0	0	0	0	0	0	0	0	0	0	0
Murder	F	0	0	0	0	0	0	0	0	0	0	0	0	0
Manslaughter by Negligence	M	0	0	0	0	0	0	0	0	0	0	0	0	0
Manslaughter by Negligence	F	0	0	0	0	0	0	0	0	0	0	0	0	0
Forcible Rape	M	0	0	0	0	0	0	0	0	0	0	0	0	0
Forcible Rape	F	0	0	0	0	0	0	0	0	0	0	0	0	0
Robbery	M	0	0	0	0	0	0	0	0	0	1	0	0	0
Robbery	F	0	0	0	0	0	0	0	0	0	0	0	0	0
Aggravated Assault	M	0	0	0	0	1	0	1	2	1	0	0	0	0
Aggravated Assault	F	0	0	0	0	0	0	0	0	0	0	0	0	0
Other Assaults	M	0	0	0	0	0	0	0	0	0	0	0	0	0
Other Assaults	F	0	0	0	0	0	0	0	0	0	0	0	0	0
Burglary	M	0	0	0	0	1	1	2	2	0	0	0	0	0
Burglary	F	0	0	0	0	0	0	0	0	0	0	0	0	1
Larceny--Theft	M	0	1	0	0	0	0	1	0	0	0	0	0	1
Larceny--Theft	F	0	0	0	0	0	0	0	0	0	0	0	0	0
Motor Vehicle Theft	M	0	0	0	0	0	1	1	0	0	0	1	0	0
Motor Vehicle Theft	F	0	0	0	0	0	0	0	0	0	0	0	0	0
Arson	M	0	0	0	0	0	0	0	0	0	0	0	0	0
Arson	F	0	0	0	0	0	0	0	0	0	0	0	0	0
Forgery & Counterfeiting	M	0	0	0	0	0	0	0	0	0	0	0	0	0
Forgery & Counterfeiting	F	0	0	0	0	0	0	0	0	0	0	0	0	0
Fraud	M	0	0	0	0	0	0	0	0	0	0	0	0	0
Fraud	F	0	0	0	0	0	0	0	0	0	0	0	0	0
Embezzlement	M	0	0	0	0	0	0	0	0	0	0	0	0	0
Embezzlement	F	0	0	0	0	0	0	0	0	0	0	0	0	0
Stolen Property-Buy, Possess, Receive	M	0	0	0	1	0	0	1	0	0	0	0	0	0
Stolen Property-Buy, Possess, Receive	F	0	0	0	1	0	0	1	0	0	0	0	0	0
Vandalism	M	0	0	0	0	0	0	0	0	0	0	0	0	0
Vandalism	F	0	0	0	0	0	0	0	0	0	0	0	0	0
Weapons-carrying, possession, etc...	M	0	0	0	1	0	0	1	2	1	1	0	0	0
Weapons-carrying, possession, etc...	F	0	0	0	0	0	0	0	0	0	0	0	0	0
Prostitution & Commercialized Vice	M	0	0	0	0	0	0	0	0	0	0	0	0	0
Prostitution & Commercialized Vice	F	0	0	0	0	0	0	0	0	0	0	0	0	0
Other Sex Offenses	M	0	0	0	0	0	0	0	0	0	0	0	0	0
Other Sex Offenses	F	0	0	0	0	0	0	0	0	0	0	0	0	0
Drug Abuse Violations	M	0	0	0	0	1	0	1	4	1	1	1	3	0
Drug Abuse Violations	F	0	0	0	1	1	0	2	0	1	0	0	1	0
Gambling	M	0	0	0	0	0	0	0	0	0	0	0	0	0
Gambling	F	0	0	0	0	0	0	0	0	0	0	0	0	0
Offenses Against Family & Children	M	0	1	2	1	1	0	5	1	2	2	2	2	2
Offenses Against Family & Children	F	0	1	0	0	2	0	3	0	0	0	0	1	0
Driving Under the Influence	M	0	0	0	0	0	0	0	0	2	1	5	0	0
Driving Under the Influence	F	0	0	0	0	0	1	1	1	1	0	1	1	0
Liquor Laws	M	0	0	0	0	0	1	1	1	0	1	0	0	0
Liquor Laws	F	0	0	0	0	0	2	2	2	0	0	0	0	0
Drunkenness	M	0	0	0	0	0	0	0	1	1	0	0	0	0
Drunkenness	F	0	0	0	0	0	0	0	0	0	0	1	0	0
Disorderly Conduct	M	0	0	0	0	0	0	0	0	0	0	0	0	0
Disorderly Conduct	F	0	0	0	0	0	0	0	0	0	0	0	0	0
Vagrancy	M	0	0	0	0	0	0	0	0	0	0	0	0	0
Vagrancy	F	0	0	0	0	0	0	0	0	0	0	0	0	0
All Other Offenses (except Traffic)	M	0	0	1	3	3	2	9	23	22	31	26	0	0
All Other Offenses (except Traffic)	F	0	0	0	0	1	2	3	0	6	1	7	0	0
Suspicion	M	0	0	0	0	0	0	0	0	0	0	0	0	0
Suspicion	F	0	0	0	0	0	0	0	0	0	0	0	0	0
Curfew and Loitering Law Violations	M	0	0	0	0	0	0	0	0	0	0	0	0	0
Curfew and Loitering Law Violations	F	0	0	0	0	0	0	0	0	0	0	0	0	0
Runaway	M	0	0	0	0	0	0	0	0	0	0	0	0	0
Runaway	F	0	0	0	0	0	0	0	0	0	0	0	0	0
GRAND TOTAL		0	3	3	8	11	10	35	40	38	40	48		

*The criminal statistics within this publication are only those criminal statistics reported to the Uniform Crime Reporting Program by the participating law enforcement agencies.

Carlin PD Arrests By Offense and Age

OFFENSE	SEX	9 & Under												
		10-12	13-14	15	16	17	Total <18	18	19	20	21			
Murder	M	0	0	0	0	0	0	0	0	0	0	0	0	0
Murder	F	0	0	0	0	0	0	0	0	0	0	0	0	0
Manslaughter by Negligence	M	0	0	0	0	0	0	0	0	0	0	0	0	0
Manslaughter by Negligence	F	0	0	0	0	0	0	0	0	0	0	0	0	0
Forcible Rape	M	0	0	0	0	0	0	0	0	0	0	0	0	0
Forcible Rape	F	0	0	0	0	0	0	0	0	0	0	0	0	0
Robbery	M	0	0	0	0	0	0	0	0	0	0	0	0	0
Robbery	F	0	0	0	0	0	0	0	0	0	0	0	0	0
Aggravated Assault	M	1	0	0	0	0	0	0	1	0	0	0	0	0
Aggravated Assault	F	0	0	1	1	0	0	2	0	0	0	0	0	0
Other Assaults	M	0	0	1	0	0	0	1	0	0	0	0	0	0
Other Assaults	F	0	0	0	0	0	0	0	0	0	0	0	0	0
Burglary	M	0	0	0	0	0	0	0	0	0	0	0	0	0
Burglary	F	0	0	0	0	0	0	0	0	0	0	0	0	0
Larceny--Theft	M	0	0	0	0	0	0	0	0	0	0	0	0	0
Larceny--Theft	F	0	0	0	0	0	0	0	0	0	0	0	0	0
Motor Vehicle Theft	M	0	0	0	0	0	0	0	0	0	0	0	0	0
Motor Vehicle Theft	F	0	0	0	0	0	0	0	0	0	0	0	0	0
Arson	M	0	0	0	0	0	0	0	0	0	0	0	0	0
Arson	F	0	0	0	0	0	0	0	0	0	0	0	0	0
Forgery & Counterfeiting	M	0	0	0	0	0	0	0	0	0	0	0	0	0
Forgery & Counterfeiting	F	0	0	0	0	0	0	0	0	0	0	0	0	0
Fraud	M	0	0	0	0	0	0	0	0	0	0	0	0	0
Fraud	F	0	0	0	0	0	0	0	0	0	0	0	0	0
Embezzlement	M	0	0	0	0	0	0	0	0	0	0	0	0	0
Embezzlement	F	0	0	0	0	0	0	0	0	0	0	0	0	0
Stolen Property-Buy, Possess, Receive	M	0	0	0	0	0	0	0	0	0	0	0	0	0
Stolen Property-Buy, Possess, Receive	F	0	0	1	0	0	0	1	0	0	0	0	0	0
Vandalism	M	0	0	0	0	0	0	0	0	0	0	0	0	0
Vandalism	F	0	0	0	0	0	0	0	0	0	0	0	0	0
Weapons-carrying, possession, etc...	M	0	0	0	0	0	0	0	0	0	0	0	0	0
Weapons-carrying, possession, etc...	F	0	0	0	0	0	0	0	0	0	0	0	0	0
Prostitution & Commercialized Vice	M	0	0	0	0	0	0	0	0	0	0	0	0	0
Prostitution & Commercialized Vice	F	0	0	0	0	0	0	0	0	0	0	0	0	0
Other Sex Offenses	M	0	0	0	0	0	0	0	0	0	0	0	0	0
Other Sex Offenses	F	0	0	0	0	0	0	0	0	0	0	0	0	0
Drug Abuse Violations	M	0	0	0	0	0	0	0	0	0	0	0	0	0
Drug Abuse Violations	F	0	0	1	0	0	0	1	0	0	0	0	0	0
Gambling	M	0	0	0	0	0	0	0	0	0	0	0	0	0
Gambling	F	0	0	0	0	0	0	0	0	0	0	0	0	0
Offenses Against Family & Children	M	0	0	0	0	0	0	0	0	0	0	0	0	0
Offenses Against Family & Children	F	0	0	0	0	0	0	0	0	0	0	0	0	0
Driving Under the Influence	M	0	0	0	0	0	0	0	0	2	2	1	0	0
Driving Under the Influence	F	0	0	0	0	0	0	0	0	1	1	0	0	0
Liquor Laws	M	0	0	0	0	0	3	3	2	6	4	0	0	0
Liquor Laws	F	0	0	2	0	1	1	4	0	0	0	0	0	0
Drunkenness	M	0	0	0	0	0	3	3	1	0	4	0	0	0
Drunkenness	F	0	0	0	0	0	0	0	0	0	0	0	0	0
Disorderly Conduct	M	0	0	0	0	0	0	0	0	0	0	0	0	0
Disorderly Conduct	F	0	0	0	0	0	0	0	0	0	0	0	0	0
Vagrancy	M	0	0	0	0	0	0	0	0	0	0	0	0	0
Vagrancy	F	0	0	0	0	0	0	0	0	0	0	0	0	0
All Other Offenses (except Traffic)	M	0	0	1	0	0	1	2	0	6	3	5	0	0
All Other Offenses (except Traffic)	F	0	0	1	0	1	0	2	0	0	0	0	0	0
Suspicion	M	0	0	0	0	0	0	0	0	0	0	0	0	0
Suspicion	F	0	0	0	0	0	0	0	0	0	0	0	0	0
Curfew and Loitering Law Violations	M	0	0	1	0	0	0	1	0	0	0	0	0	0
Curfew and Loitering Law Violations	F	0	0	1	1	0	0	2	0	0	0	0	0	0
Runaway	M	0	0	0	0	0	1	1	0	0	0	0	0	0
Runaway	F	0	0	4	1	0	1	6	0	0	0	0	0	0
GRAND TOTAL		1	0	14	3	2	10	30	6	15	12	5		

*The criminal statistics within this publication are only those criminal statistics reported to the Uniform Crime Reporting Program by the participating law enforcement agencies.

Carson City SO Arrests by Offense and Age

OFFENSE	SEX	9 & Under												
		10-12	13-14	15	16	17	Total <18	18	19	20	21			
Murder	M	0	0	0	0	0	0	0	0	0	0	0	0	1
	F	0	0	0	0	0	0	0	0	0	0	0	0	0
Manslaughter by Negligence	M	0	0	0	0	0	0	0	0	0	0	0	0	0
	F	0	0	0	0	0	0	0	0	0	0	0	0	0
Forcible Rape	M	0	0	1	0	0	0	1	1	0	0	0	0	0
	F	0	0	0	0	0	0	0	0	0	0	0	0	0
Robbery	M	0	0	0	0	0	1	1	1	3	0	0	0	0
	F	0	0	0	0	0	0	0	0	0	0	0	0	0
Aggravated Assault	M	1	5	4	3	4	1	18	8	5	5	5	5	5
	F	0	2	3	1	1	0	7	1	1	1	1	0	0
Other Assaults	M	0	2	2	1	4	1	10	5	3	3	3	3	3
	F	0	0	1	2	2	0	5	3	0	2	2	2	2
Burglary	M	0	2	3	0	2	1	8	3	1	1	1	0	0
	F	0	0	0	0	2	0	2	0	0	0	0	0	0
Larceny--Theft	M	2	3	5	11	11	5	37	6	5	7	3	3	3
	F	0	2	4	2	5	5	18	2	4	4	2	2	2
Motor Vehicle Theft	M	0	0	0	1	1	0	2	0	0	0	0	0	0
	F	0	0	0	0	0	0	0	0	0	0	0	0	0
Arson	M	0	2	0	1	0	1	4	0	0	0	0	0	0
	F	0	1	0	0	0	0	1	0	0	0	0	0	0
Forgery & Counterfeiting	M	0	0	0	0	1	0	1	0	0	0	0	0	0
	F	0	0	0	0	0	0	0	0	0	0	0	0	0
Fraud	M	0	0	0	0	0	0	0	0	4	3	6	6	6
	F	0	0	0	0	0	0	0	2	2	2	2	2	2
Embezzlement	M	0	0	0	0	0	0	0	0	0	0	0	0	0
	F	0	0	0	0	0	1	1	3	1	0	0	0	0
Stolen Property-Buy, Possess, Receive	M	0	0	1	0	1	2	4	4	0	1	1	1	1
	F	0	0	0	0	0	1	1	0	0	2	0	0	0
Vandalism	M	0	4	4	1	3	1	13	2	0	1	1	1	1
	F	0	0	0	0	0	0	0	0	0	0	0	0	0
Weapons-carrying, possession, etc...	M	0	1	0	0	1	0	2	1	2	2	0	0	0
	F	0	0	0	0	0	0	0	0	0	0	0	0	0
Prostitution & Commercialized Vice	M	0	0	0	0	0	0	0	0	0	0	0	0	0
	F	0	0	0	0	0	0	0	0	0	0	0	0	0
Other Sex Offenses	M	0	0	0	0	0	0	0	1	0	2	2	2	2
	F	0	0	0	0	0	0	0	0	0	0	0	0	0
Drug Abuse Violations	M	0	2	1	2	1	4	10	10	6	7	10	10	10
	F	0	0	1	0	1	0	2	5	2	2	0	0	0
Gambling	M	0	0	0	0	0	0	0	0	0	0	0	0	0
	F	0	0	0	0	0	0	0	0	0	0	0	0	0
Offenses Against Family & Children	M	0	0	0	0	0	0	0	0	1	0	1	0	1
	F	0	0	0	0	0	0	0	0	0	0	0	0	1
Driving Under the Influence	M	0	0	0	0	0	0	0	1	1	4	8	8	8
	F	0	0	0	0	0	1	1	0	1	1	2	2	2
Liquor Laws	M	0	2	5	8	18	32	65	41	30	30	2	2	2
	F	0	0	3	5	14	9	31	9	9	4	0	0	0
Drunkenness	M	0	0	0	0	0	0	0	0	0	0	0	0	0
	F	0	0	0	0	0	0	0	0	0	0	0	0	0
Disorderly Conduct	M	0	0	1	1	1	1	4	1	0	0	2	2	2
	F	0	0	0	0	0	0	0	0	0	0	1	1	1
Vagrancy	M	0	0	0	0	0	0	0	5	7	6	6	6	6
	F	0	0	0	0	0	0	0	0	1	3	2	2	2
All Other Offenses (except Traffic)	M	0	7	25	22	32	37	123	31	64	51	47	47	47
	F	0	3	5	10	12	15	45	20	26	26	12	12	12
Suspicion	M	0	0	0	0	0	0	0	0	0	0	0	0	0
	F	0	0	0	0	0	0	0	0	0	0	0	0	0
Curfew and Loitering Law Violations	M	0	0	0	0	0	0	0	0	0	0	0	0	0
	F	0	0	0	0	0	0	0	0	0	0	0	0	0
Runaway	M	0	3	6	3	8	2	22	0	0	0	0	0	0
	F	0	0	5	5	6	9	25	0	0	0	0	0	0
GRAND TOTAL		3	41	80	79	131	130	464	165	179	170	120	120	120

*The criminal statistics within this publication are only those criminal statistics reported to the Uniform Crime Reporting Program by the participating law enforcement agencies.

Carson City SO Arrests by Offense and Age

22	23	24	25-29	30-34	35-39	40-44	45-49	50-54	55-59	60-64	over 64	Total >18	Grand Total
0	0	0	0	0	0	0	0	0	0	0	0	1	1
0	0	0	0	0	0	0	0	0	0	0	0	0	0
0	0	0	0	0	0	0	0	0	0	0	0	0	0
0	0	0	0	0	0	0	0	0	0	0	0	0	0
0	0	0	1	0	0	0	0	0	0	0	0	1	2
0	0	0	0	0	0	0	0	0	0	0	0	0	0
0	1	0	3	3	0	3	0	0	0	0	0	14	15
0	0	0	0	0	0	0	0	0	0	0	0	0	0
5	10	8	14	13	5	9	14	5	1	1	0	108	126
1	0	0	7	7	4	1	1	1	3	0	1	29	36
11	5	5	31	18	22	24	12	9	7	2	1	161	171
2	2	1	7	2	8	5	8	4	3	0	1	50	55
1	1	2	3	3	5	3	4	1	2	0	0	30	38
0	0	0	1	3	2	3	0	1	0	0	0	10	12
0	3	1	14	4	4	10	10	7	3	1	1	79	116
0	1	2	2	5	4	7	3	2	0	1	0	39	57
0	0	0	0	1	0	1	0	0	0	0	0	2	4
0	0	0	0	0	1	0	0	0	0	0	0	1	1
0	0	0	0	0	0	0	0	0	0	0	0	0	4
0	0	0	0	0	0	0	0	0	0	0	0	0	1
0	0	0	0	0	1	1	1	1	0	0	0	4	5
0	0	0	0	2	0	1	0	0	0	0	0	3	3
3	7	1	9	2	4	7	5	0	1	0	0	52	52
0	2	1	6	6	5	1	0	1	1	0	0	29	29
0	1	0	3	1	1	2	0	1	0	0	0	9	9
0	0	0	0	1	2	1	0	0	1	0	0	9	10
4	2	3	1	2	4	4	1	1	0	0	0	28	32
0	1	0	1	0	0	0	1	0	0	0	0	5	6
0	1	2	2	2	0	3	0	1	1	0	0	16	29
0	0	0	1	1	1	0	2	0	1	0	0	6	6
0	1	2	5	1	4	0	1	0	1	0	0	20	22
0	0	0	0	0	1	0	1	0	0	0	0	2	2
0	0	0	0	0	0	0	0	0	0	0	0	0	0
0	0	0	0	0	0	0	0	0	0	0	0	0	0
0	0	1	3	1	3	1	3	3	2	0	0	22	22
1	0	0	0	0	0	0	1	0	1	0	0	3	3
4	8	6	20	9	10	6	6	4	1	0	0	107	117
2	1	2	4	5	1	1	2	1	0	0	0	28	30
0	0	0	0	0	0	0	0	0	0	0	0	0	0
0	0	0	0	0	0	0	0	0	0	0	0	0	0
0	0	1	2	1	0	1	1	0	0	0	0	8	8
1	0	0	1	1	1	3	0	0	0	0	0	8	8
9	6	4	29	18	13	11	16	18	3	5	4	150	150
2	1	2	1	4	8	8	7	4	4	0	1	46	47
2	1	1	4	2	1	4	2	1	1	0	0	122	187
0	1	0	0	0	0	1	0	1	0	0	0	25	56
0	0	0	1	0	0	2	1	0	0	0	0	4	4
0	0	0	0	0	0	0	0	0	0	0	0	0	0
1	2	2	6	7	2	7	7	2	1	1	0	41	45
0	1	0	1	1	1	1	2	0	0	0	0	8	8
3	7	1	15	15	13	6	7	0	1	0	0	92	92
2	0	2	7	8	5	4	1	2	1	0	0	38	38
70	54	38	176	95	123	124	71	40	19	8	5	1,016	1,139
15	6	6	60	31	36	30	25	9	4	0	0	306	351
0	0	0	0	0	0	0	0	0	0	0	0	0	0
0	0	0	0	0	0	0	0	0	0	0	0	0	0
0	0	0	0	0	0	0	0	0	0	0	0	0	0
0	0	0	0	0	0	0	0	0	0	0	0	0	0
0	0	0	0	0	0	0	0	0	0	0	0	0	22
0	0	0	0	0	0	0	0	0	0	0	0	0	25
139	126	94	441	275	295	296	216	120	63	19	14	2,732	3,196

Churchill Co SO Arrests By Offense and Age

OFFENSE	SEX	9 & Under											
		10 -12	13-14	15	16	17	Total <18	18	19	20	21		
Murder	M	0	0	0	0	0	0	0	0	0	0	0	0
	F	0	0	0	0	0	0	0	0	0	0	0	0
Manslaughter by Negligence	M	0	0	0	0	0	0	0	0	0	0	0	0
	F	0	0	0	0	0	0	0	0	0	0	0	0
Forcible Rape	M	0	0	0	0	0	0	1	1	0	0	0	0
	F	0	0	0	0	0	0	0	0	0	0	0	0
Robbery	M	0	0	0	0	0	0	0	0	0	0	0	0
	F	0	0	0	0	0	0	0	0	0	0	0	0
Aggravated Assault	M	0	2	0	0	0	0	0	2	1	0	0	1
	F	0	0	0	0	0	0	0	0	0	0	0	0
Other Assaults	M	0	3	8	3	7	2	23	3	1	0	0	3
	F	1	0	0	2	2	1	6	1	0	0	0	0
Burglary	M	1	1	0	1	3	4	10	0	1	1	1	1
	F	1	0	0	0	0	1	2	1	0	1	0	0
Larceny--Theft	M	2	0	0	0	0	3	5	0	0	0	0	0
	F	0	0	0	0	0	0	0	0	0	0	0	0
Motor Vehicle Theft	M	0	0	0	0	0	1	1	0	0	0	0	0
	F	0	0	0	0	2	0	2	0	0	0	0	0
Arson	M	1	0	0	0	0	0	1	0	0	0	0	0
	F	0	0	0	0	0	0	0	0	0	0	0	0
Forgery & Counterfeiting	M	0	0	0	0	0	0	0	0	0	0	0	0
	F	0	0	0	0	0	0	0	0	0	0	0	0
Fraud	M	0	0	0	0	0	0	0	0	0	0	0	0
	F	0	0	0	0	0	0	0	0	0	0	0	0
Embezzlement	M	0	0	0	0	0	0	0	0	0	0	0	0
	F	0	0	0	0	0	0	0	0	0	0	0	0
Stolen Property-Buy, Possess, Receive	M	0	0	0	1	1	0	2	0	0	0	0	0
	F	0	0	0	0	0	0	0	0	0	0	0	0
Vandalism	M	0	0	5	3	8	1	17	0	0	0	0	0
	F	0	0	1	0	0	2	3	0	0	1	0	0
Weapons-carrying, possession, etc...	M	0	2	0	0	0	0	2	1	0	0	0	0
	F	0	0	0	0	0	0	0	0	0	0	0	0
Prostitution & Commercialized Vice	M	0	0	0	0	0	0	0	0	0	0	0	0
	F	0	0	0	0	0	0	0	0	0	0	0	0
Other Sex Offenses	M	0	2	0	0	0	0	2	1	0	0	0	0
	F	1	1	0	0	0	0	2	0	0	0	0	0
Drug Abuse Violations	M	0	0	0	0	1	0	1	0	0	0	0	0
	F	0	0	0	0	0	0	0	0	0	0	0	0
Gambling	M	0	0	0	0	0	0	0	0	0	0	0	0
	F	0	0	0	0	0	0	0	0	0	0	0	0
Offenses Against Family & Children	M	0	0	0	0	0	0	0	0	0	0	0	0
	F	0	0	0	0	0	0	0	0	0	0	0	0
Driving Under the Influence	M	0	0	0	1	1	1	3	0	0	1	4	0
	F	0	0	0	0	0	0	0	0	1	0	0	0
Liquor Laws	M	0	0	1	3	9	9	22	14	7	6	0	0
	F	0	0	1	4	4	11	20	4	1	5	0	0
Drunkenness	M	0	0	0	0	0	0	0	0	0	0	1	0
	F	0	0	0	0	0	0	0	0	0	0	1	0
Disorderly Conduct	M	2	2	13	0	3	2	22	0	0	0	0	0
	F	0	0	1	6	5	5	17	0	0	0	0	0
Vagrancy	M	0	0	0	0	0	0	0	0	0	0	0	0
	F	0	0	0	0	0	0	0	0	0	0	0	0
All Other Offenses (except Traffic)	M	7	8	8	4	7	6	40	7	5	8	8	8
	F	0	0	9	1	2	1	13	1	8	8	10	0
Suspicion	M	0	0	2	2	1	0	5	0	0	0	0	0
	F	0	0	0	1	0	0	1	0	0	0	0	0
Curfew and Loitering Law Violations	M	0	1	0	0	0	0	1	0	0	0	0	0
	F	0	0	0	0	0	0	0	0	0	0	0	0
Runaway	M	0	1	2	1	5	4	13	0	0	0	0	0
	F	0	0	5	7	10	9	31	0	0	0	0	0
GRAND TOTAL		16	23	56	40	71	64	270	34	24	31	29	

*The criminal statistics within this publication are only those criminal statistics reported to the Uniform Crime Reporting Program by the participating law enforcement agencies.

Churchill Co SO Arrests By Offense and Age

22	23	24	25-29	30-34	35-39	40-44	45-49	50-54	55-59	60-64	over 64	Total >18	Grand Total
0	0	0	0	0	0	0	0	0	0	0	1	1	1
0	0	0	0	0	0	0	0	0	0	0	0	0	0
0	0	0	0	0	0	0	0	0	0	0	0	0	0
0	0	0	0	0	0	0	0	1	0	0	0	1	2
0	0	0	0	0	0	0	0	0	0	0	0	0	0
0	0	0	0	0	0	0	0	0	0	0	0	0	0
0	3	1	1	2	1	0	1	1	0	0	0	12	14
0	0	0	0	0	0	0	1	0	0	0	0	1	1
2	2	0	7	4	6	6	3	3	6	0	0	46	69
1	0	0	2	3	3	1	2	2	0	0	1	16	22
1	1	2	1	0	0	1	0	0	0	0	0	9	19
0	1	0	0	0	0	0	0	0	0	0	0	3	5
0	1	0	1	2	1	0	1	0	0	0	0	6	11
0	0	0	0	0	1	0	1	0	0	0	0	2	2
0	0	0	0	0	0	0	0	0	0	0	0	0	1
0	0	0	0	0	0	0	0	0	0	0	0	0	2
0	0	0	0	0	0	0	0	0	0	0	0	0	1
0	0	0	0	1	0	0	0	0	0	0	0	1	1
0	0	0	0	0	0	0	0	1	0	0	0	1	1
0	0	0	0	1	0	0	0	0	0	0	0	1	1
0	0	0	1	1	0	0	1	0	0	0	0	3	3
0	0	0	0	1	0	1	0	0	0	0	0	2	2
1	0	0	0	0	1	0	0	0	1	0	0	3	3
0	0	0	0	1	0	1	0	0	0	0	0	2	2
1	0	0	0	1	1	1	1	0	0	0	0	5	7
0	0	0	0	0	0	0	1	0	0	0	0	1	1
0	0	0	0	0	0	0	0	0	0	0	0	0	17
0	0	0	0	0	0	0	0	0	0	0	0	1	4
0	0	0	1	0	0	0	0	0	0	0	0	2	4
0	0	0	0	0	0	0	0	0	0	0	0	0	0
0	0	0	0	0	0	0	0	0	0	0	0	0	0
0	0	0	0	0	0	0	0	0	0	0	0	0	0
1	0	0	1	1	0	1	1	0	0	0	0	6	8
0	0	0	0	0	0	0	0	0	0	0	0	0	2
0	1	0	0	0	0	0	0	0	0	0	0	1	2
0	0	0	0	0	0	0	0	0	0	0	0	0	0
0	0	0	0	0	0	0	0	0	0	0	0	0	0
0	0	0	0	0	0	0	0	0	0	0	0	0	0
0	0	0	0	0	0	0	0	0	0	0	0	0	0
0	0	0	0	0	0	0	0	0	0	0	0	0	0
1	3	2	5	4	6	7	5	4	4	1	2	49	52
0	0	0	1	4	2	1	2	0	0	0	2	13	13
0	0	1	0	1	0	0	0	0	0	0	0	29	51
0	0	0	0	0	0	0	0	0	0	0	0	10	30
1	0	0	0	0	2	3	2	2	0	0	0	11	11
0	0	0	0	0	0	0	0	0	0	0	0	1	1
0	0	0	0	0	0	0	0	0	0	0	0	0	22
0	0	0	0	0	0	0	0	0	0	0	0	0	17
0	0	0	0	0	0	0	0	0	0	0	0	0	0
0	0	0	0	0	0	0	0	0	0	0	0	0	0
11	13	13	62	22	40	33	20	12	3	2	5	264	304
4	6	4	31	16	13	14	7	3	1	3	0	129	142
0	0	0	0	0	0	0	0	0	0	0	0	0	5
0	0	0	0	0	0	0	0	0	0	0	0	0	1
0	0	0	0	0	0	0	0	0	0	0	0	0	1
0	0	0	0	0	0	0	0	0	0	0	0	0	0
0	0	0	0	0	0	0	0	0	0	0	0	0	13
0	0	0	0	0	0	0	0	0	0	0	0	0	31
24	31	23	114	65	77	70	49	29	15	6	11	632	902